



14 Mitchell Avenue Highbury SA

3 2 4

A very special home.

Buyers will appreciate both the internal living spaces and outdoor entertaining areas. All are stunning.

Inspection of this family home is highly recommended!

Huge solid brick garage and workshop room positioned at the back of the block with a direct driveway access.

2 massive outdoor undercover areas. Wait until you experience the garden views through the mediterranean arches. What a vibe.

Standout solid timber kitchen complete with an abundance

[For full version visit the website](#)

Type : House
Price : \$ 1,190,000
Land Size : 908 sqm
View : <https://www.bruse.com.au/sale/sa/north-north-east-suburbs/highbury/residential/house/8546114>



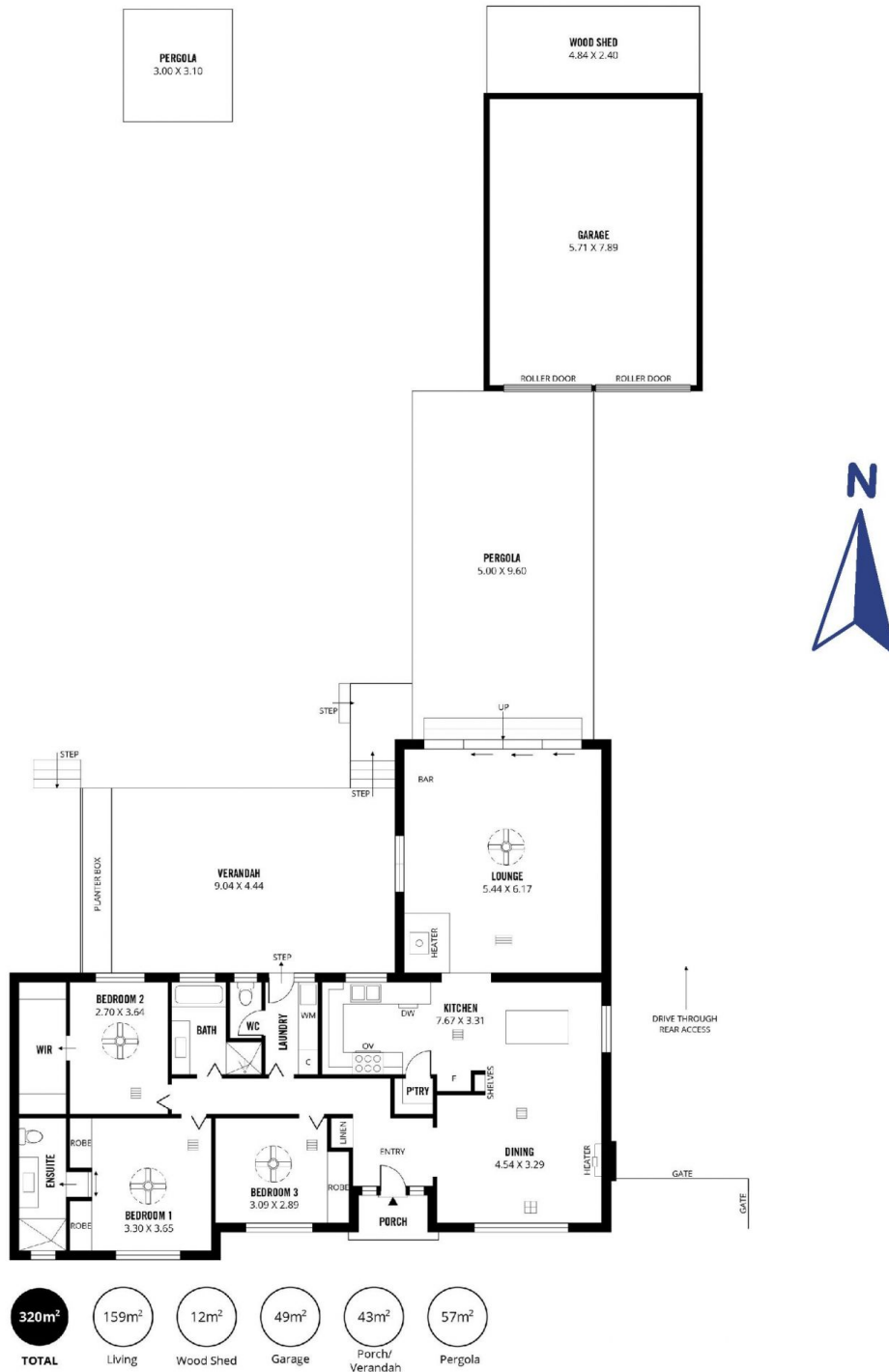
Theon Bruse
08 8431 8181



Bevan Bruse
08 8431 8181

HIGHBURY

14 Mitchell Avenue



Bruse Real Estate
357 Greenhill Road
Toorak Gardens
P: 8431 8181
RLA: 181689

www.bruse.com.au



SITE PLAN

