



### 17b & 17c Murray Street Ridgehaven SA

3  2  2 

What a lovely location to live your next life chapter. Close to a choice of tranquil open green spaces. Playgrounds, ovals, walking trails, doggie park, bowling club, and the convenience of Tea Tree Plaza and its transport hub close by.

**Type** : House  
**Price** : \$ 785,000  
**View** : <https://www.bruse.com.au/sale/sa/north-north-east-suburbs/ridgehaven/residential/house/8446131>

Ready to settle on the land NOW!

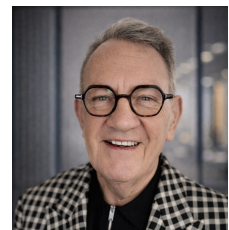
We will be selling the homes as a fixed price house & land package, so all buyers will be able to save money on stamp duty, or pay none at all if you meet the first home buyer approval recommendation from Revenue SA. I repeat - this is a fixed price building contract which is hard to find.

The land will be ready for settlement in October this year

[For full version visit the website](https://www.bruse.com.au)



**Theon Bruse**  
08 8431 8181



**Bevan Bruse**  
08 8431 8181