



**18 Thomson Avenue Rostrevor SA**

3 1 3

Lots of upgrades  
Spacious living rooms  
Well designed to maximise the natural light  
Big block of 585 sqm  
Buyers will love this family home and the potential to add value and upgrade the back yard area.  
Great value in a top spot.

- 3 Bedrooms
- Recently upgraded central kitchen
- 2 separate & generous light & bright living rooms.
- Neat & tidy bathroom & w.c.

Lock up garage with drive through to a double garage/workshop. Very generous cellar accessible from the garage.

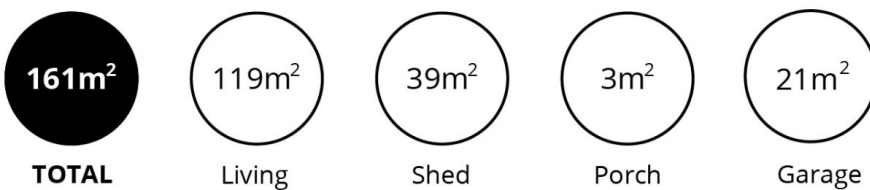
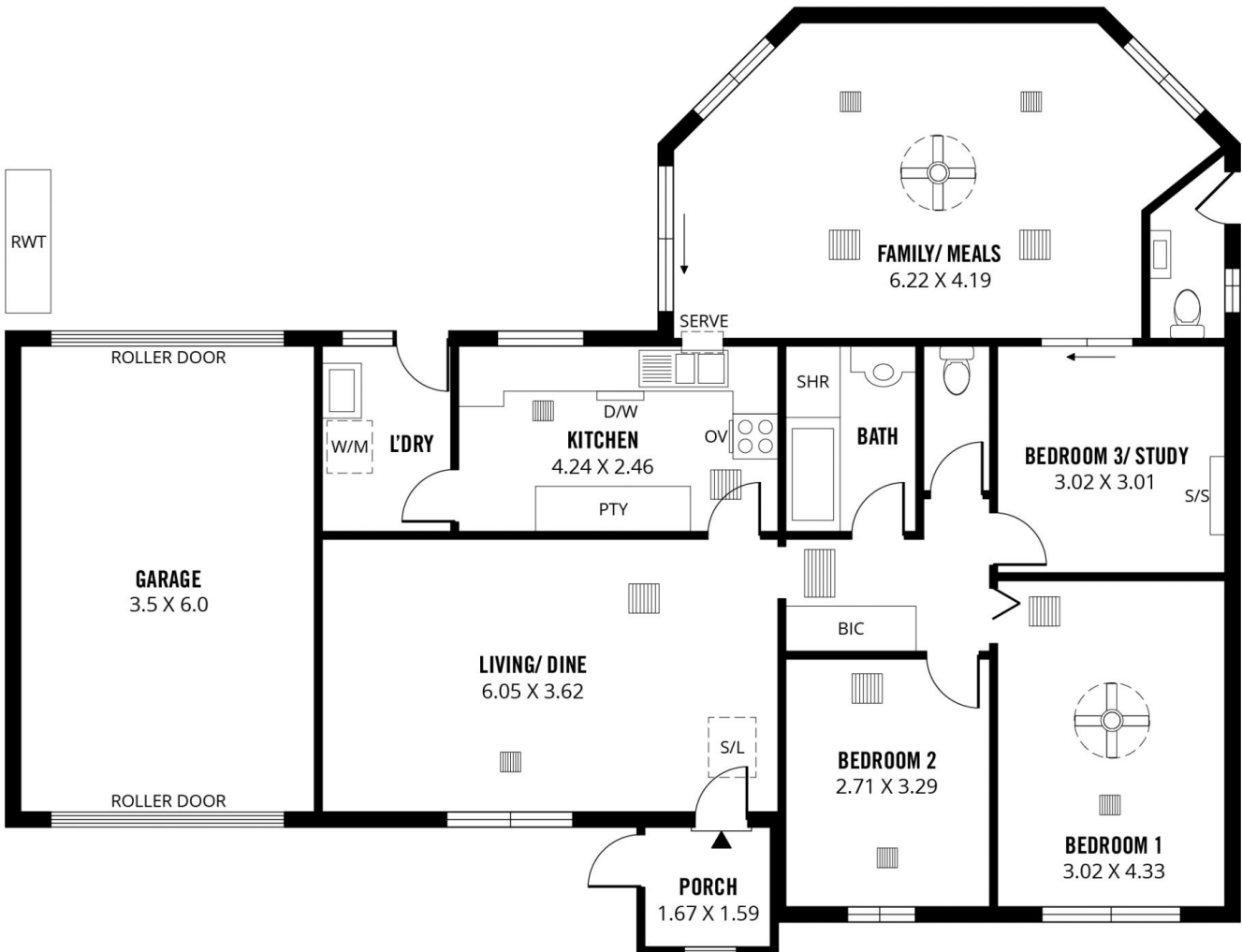
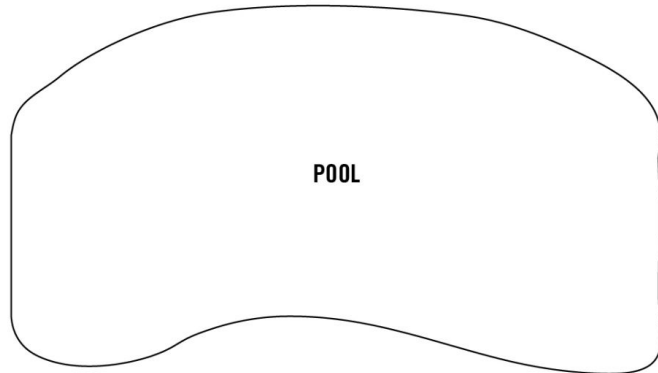
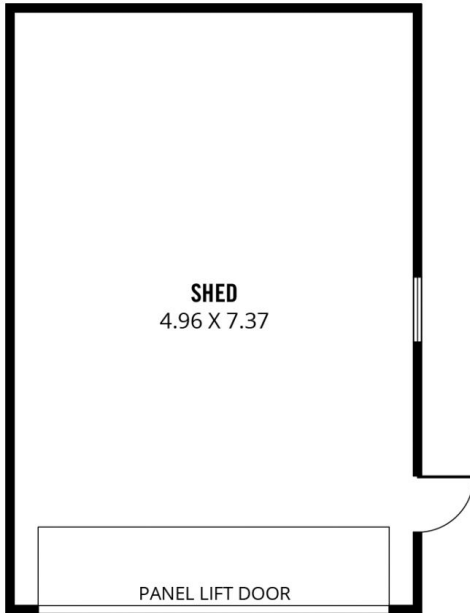
**Price** : UNDER CONTRACT  
**Land Size** : 585 sqm  
**View** : <https://www.bruse.com.au/sale/sa/eastern-suburbs/rostrrevor/residential/house/7996194>



**Theon Bruse**  
08 8431 8181



**Bevan Bruse**  
08 8431 8181



Scale in metres. This drawing is for illustration purposes only. All measurements are approximate and details intended to be relied upon should be independently verified.

Produced by **The Fotobase Group**