



2/24 Grenache Avenue Modbury SA

3 2 2

Buyers will be very impressed with this new homes. The architect has designed the home to showcase the unique and exciting outlook over the park at the back of the homes. The ultimate in luxury and peaceful living.

Price : \$ 645,000

View : <https://www.bruse.com.au/sale/sa/north-north-east-suburbs/modbury/residential/house/7967789>

4 FRONT PROPERTY DEVELOPMENTS. Being built by an extremely good local second generation builder. This is a builder of whom I have sold for many times over the past 20 years. They pride themselves in their work and their experience of 2 generations of building homes and this defiantly shows in the homes they build.



Theon Bruse
08 8431 8181



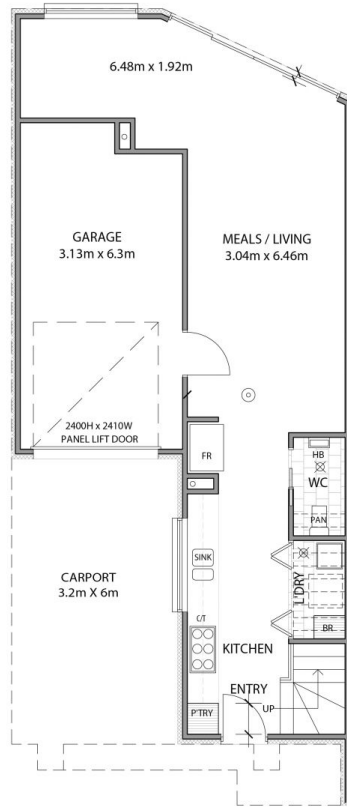
Bevan Bruse
08 8431 8181

Top quality fixtures and finishes throughout with everything except curtains included.

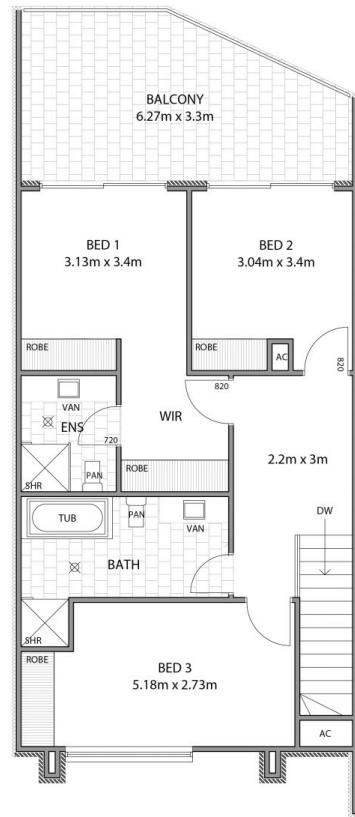
SO MUCH NATURAL LIGHT TO ALL ROOMS.

GRENACHE AVENUE MODBURY

AREAS (D1)	SQM
Lower Living	50.80
Upper Living	73.00
Carport	19.20
Garage	22.30
Porch	01.00
Balcony	18.30
TOTAL	184.60



Ground Floor Plan D2



Upper Plan D2