



1-4/24 Grenache Avenue Modbury SA

3  **2**  **2** 

3 SOLD | ONLY 1 LEFT

Buyers will be very impressed with these new homes. The architect has designed the homes to showcase the unique and exciting outlook over the park at the back of the homes. The ultimate in luxury and peaceful living.

4 FRONT PROPERTY DEVELOPMENTS. Being built by an extremely good local second generation builder. This is a builder of whom I have sold for many times over the past 20 years. They pride themselves in their work and their experience of 2 generations of building homes and this definitely shows in the homes they build.

4 different designs to choose from. All with backyards and large bedrooms that overlook the park. **ONLY 1 REMAINS.**

Price : \$675,000

View : <https://www.bruse.com.au/sale/sa/north-north-east-suburbs/modbury/residential/house/7952525>



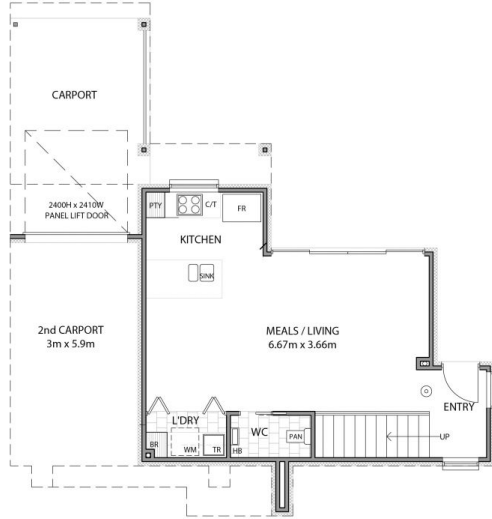
Theon Bruse
08 8431 8181



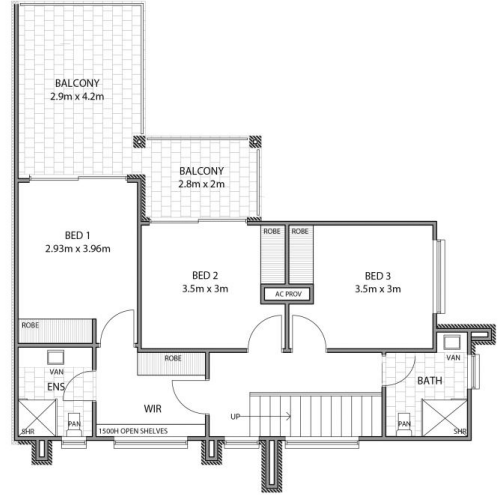
Bevan Bruse
08 8431 8181

GRENACHE AVENUE MODBURY

AREAS (D1)	SQM
Lower Living	47.50
Upper Living	66.10
Carport	16.20
2nd Carport	17.70
Porch	01.00
Balcony	20.10
TOTAL	168.60



Ground Floor Plan D4



Upper Plan D4