



1506/96 North Terrace Adelaide SA

2 2 1

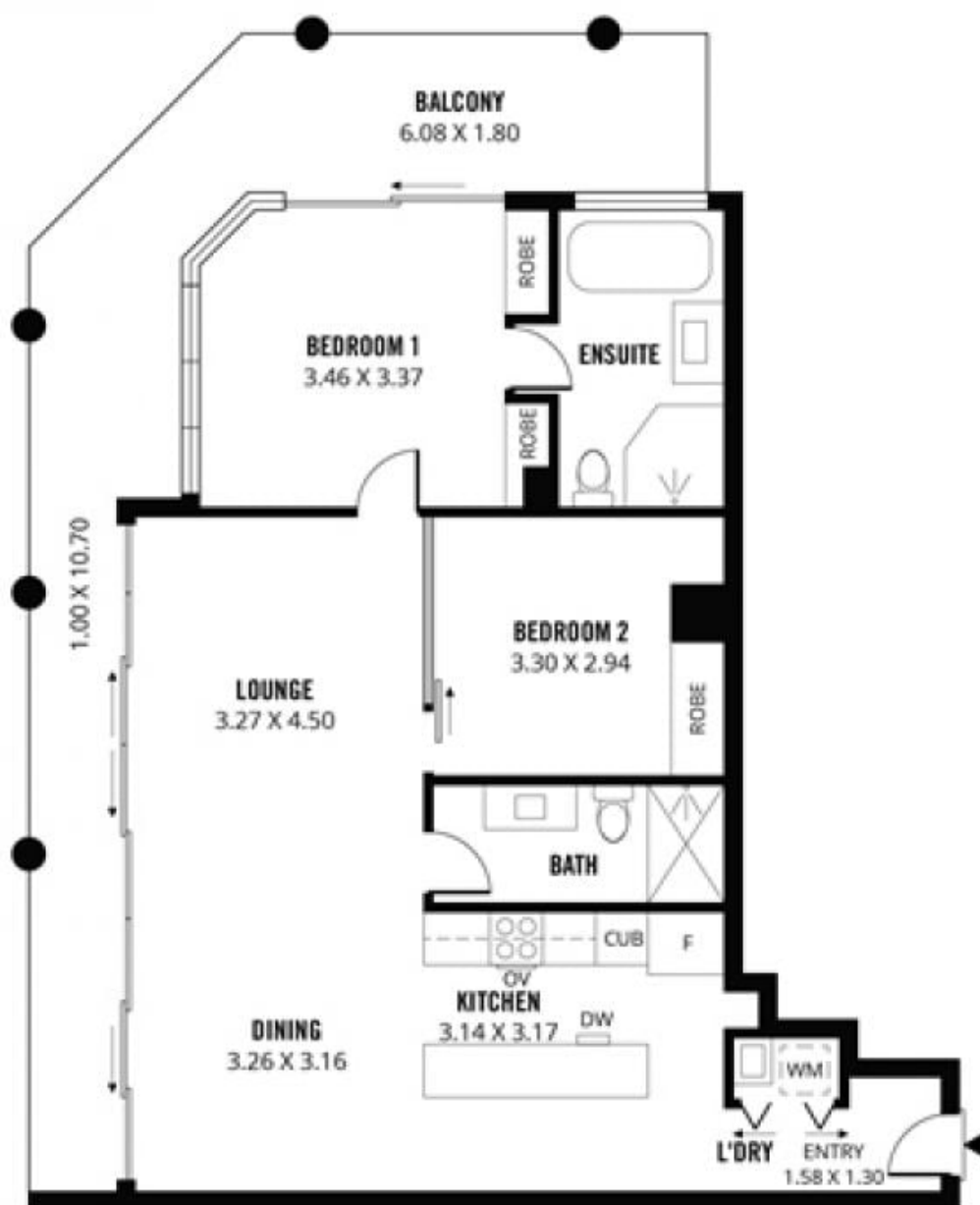
Boasting some of the most amazing views in town, this exclusive 2 bedroom apartment offers an envious city lifestyle in such a premium CBD location. Positioned on the 15th floor in the south-east corner of the Embassy Apartments, the extensive use floor to ceiling windows and the huge wrap-around balcony embrace the breathtaking 270 degree views over the River Torrens, stunning ocean sunsets, Adelaide Hills, and the city skyline.

Less than 500 metres away is the new Royal Adelaide Hospital with the Medical Precinct adjacent. Education facilities here include the University of Adelaide's medical and health sciences building and UniSA's City West campus, Health and Medical Clinic. Adelaide TAFE is also very close by with secondary education zoning for Adelaide High School Adelaide Botanic High School.

Price : \$745,000 - \$785,000
Building Size : 109 sqm
View : <https://www.bruse.com.au/sale/sa/adelaide/adelaide/residential/apartment/7923189>



Toby Shipway
8413 8181



109m²

TOTAL



84m²

Living



25m²

Balcony



Scale in metres. This drawing is for illustration purposes only. All measurements are approximate and details intended to be relied upon should be independently verified. Produced by The Fotobase Group