

13 Ritchie Terrace Marleston SA

4 3 2

BUYERS WHO APPRECIATE THE FINER DETAILS AND EXPECT THE BEST IN QUALITY WILL BE VERY IMPRESSED WITH THESE 3 NEW HOMES TO BE BUILT. THE ATTENTION TO DETAIL IN THE DESIGN AND FINISH IS SPECTACULAR. THE SIZE OF THE HOMES IS RARE AND WILL BE APPRECIATED BY BUYERS FOR MANY YEARS TO COME.

Price : \$1.22m

View : <https://www.bruse.com.au/sale/sa/western-beach-side-suburbs/marleston/residential/house/792268>
1

Modern and fresh designs with a warm homely feel

Designed to maximise the natural light.

TWO MAIN BEDROOM SUITES. ONE ON THE LOWER LEVEL AND ONE ON THE UPPER LEVEL. 4 BEDROOMS AND 3 LUXURIOUS BATHROOMS IN TOTAL. ALL BEDROOMS ARE KING SIZE AND INCLUDE VERY LARGE WALK IN ROBES AND BUILT IN ROBES.



Theon Bruse
08 8431 8181

2/13 RITCHIE TCE, MARLESTON
FOR SALE \$1,280,000

Total House Size: 246.7 sqm



LAND SIZE 270m²

AREAS (D2)	m ²
LOWER LIVING	100.60
UPPER LIVING	94.50
GARAGE	36.20
PORCH	1.00
ALFRESCO	14.40
TOTAL	246.70

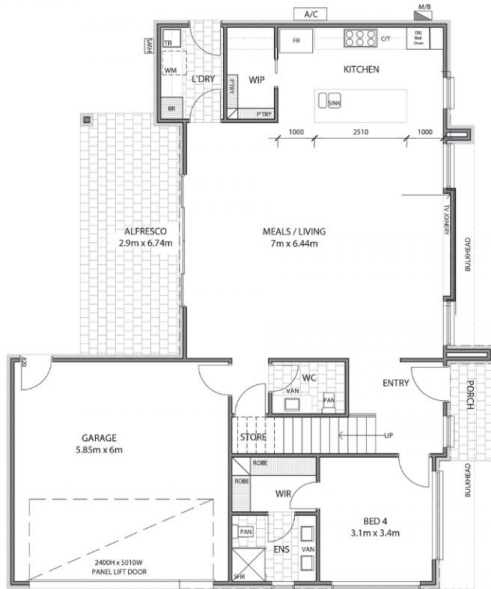
Major Avenue

LOWER FLOOR PLAN - D2 SCALE 1:100

UPPER FLOOR PLAN - D2 SCALE 1:100

3/13 RITCHIE TCE, MARLESTON
FOR SALE \$1,280,000

Total House Size: 271.7 sqm



Ritchie Tce
 View across to Park



LAND SIZE 266.7m²

AREAS (D3)	m ²
LOWER LIVING	108.40
UPPER LIVING	193.70
GARAGE	39.00
PORCH	3.10
ALFRESCO	17.50
TOTAL	271.70

Major Avenue

LOWER FLOOR PLAN - D3 SCALE 1:100

UPPER FLOOR PLAN - D3 SCALE 1:100