



157 Marian Road Firle SA

3 1 2

This is a very good buying opportunity in this highly sought after location. Buyers will need to act quickly as this property will sell quickly. Corner allotments are rare earth!

Buyers will love this living environment!

Superb location in the Eastern Suburbs. This property has a lovely park on the street and only 6 houses away. Only a short walk to the Firle Plaza Shopping Center. The Parade at Norwood is close by too. Top schools and all the amenities to attract family living. Prime location!

CORNER OF SCOTT STREET AND MARIAN ROAD.

EXCELLENT DEVELOPMENT SITE FOR UP TO 3 HOMES (Subject to Council Approval)

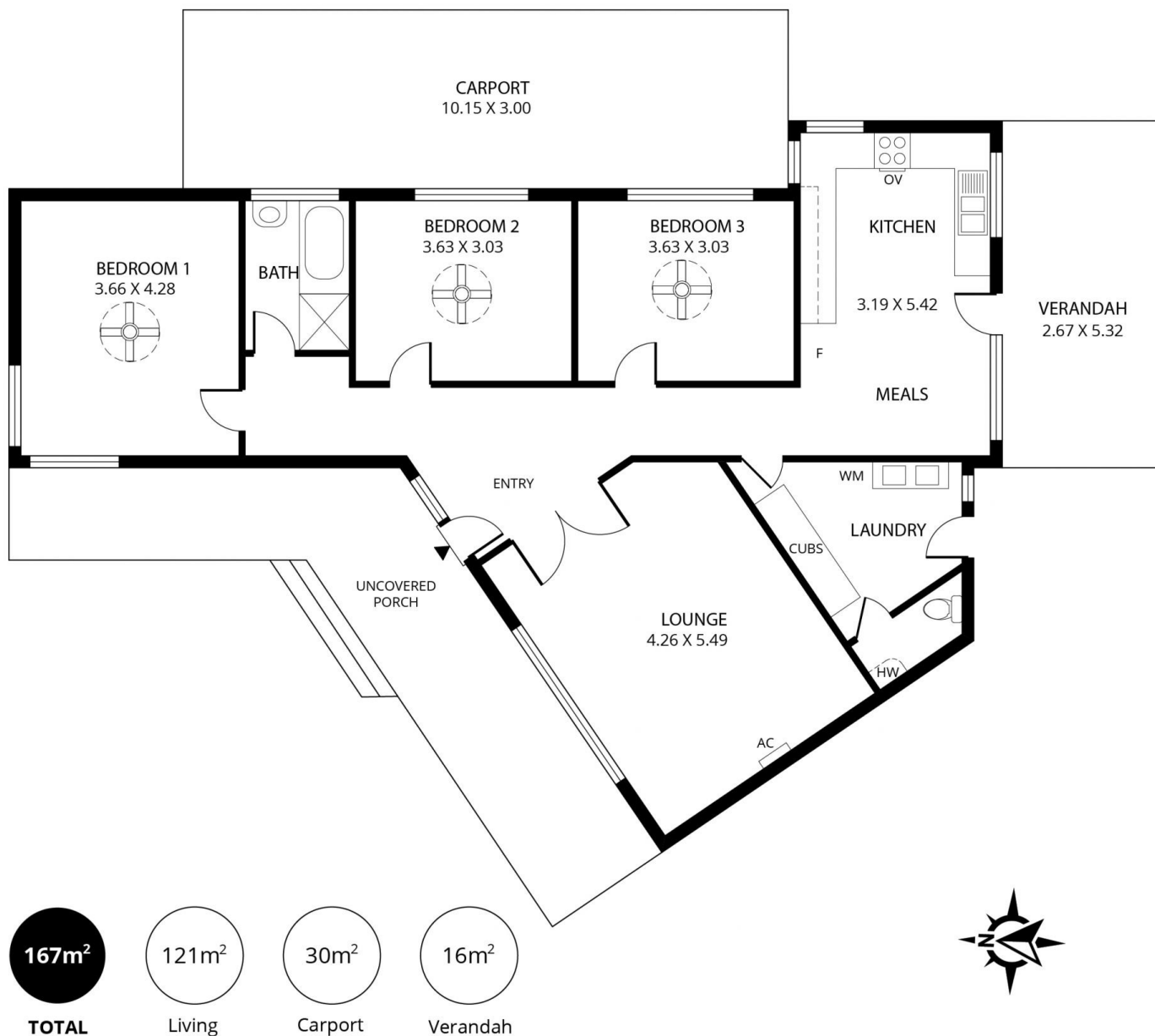
Price : \$ 1,340,000
Land Size : 795 sqm
View : <https://www.bruse.com.au/sale/sa/eastern-suburbs/firle/residential/house/7920248>



Theon Bruse
08 8431 8181



Bevan Bruse
08 8431 8181



Scale in metres. This drawing is for illustration purposes only. All measurements are approximate and details intended to be relied upon should be independently verified.

Produced by **The Fotobase Group**

