



34 Ferguson Avenue Myrtle Bank SA

4 2 2

This home was built by the current owners in 2009 and they are now scaling down to a smaller home.

THIS IS A HOME OF GENEROUS PROPORTIONS WITH AMAZING OPEN PLAN LIVING, YET SEPERATED INTO EXCELLENT LIVING AREAS FOR AN EASY AND WONDERFUL LIFESTYLE.

The elegant entrance hallway OF the home opens into the formal sitting room of the residence and further from the entrance hallway to the amazing main bedroom suite.

This very large main bedroom suite has an area for a parent's retreat, large walk-in robe/dressing room and an excellent ensuite facility. This main bedroom also has direct access out to a private court yard garden area.

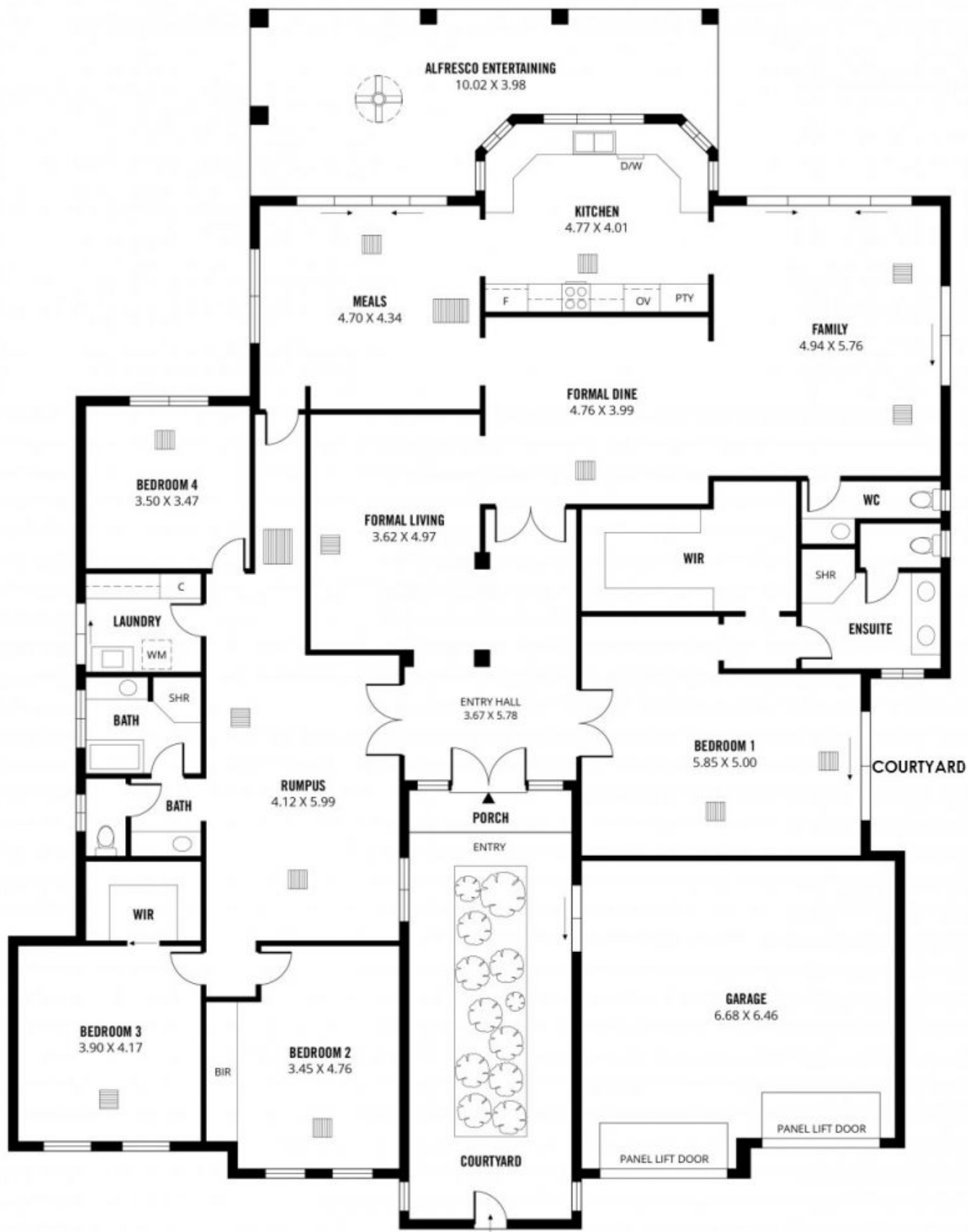
Price : \$ 1,865,000
Land Size : 992 sqm
View : <https://www.bruse.com.au/sale/sa/eastern-suburbs/myrtle-bank/residential/house/7900442>



Bevan Bruse
08 8431 8181

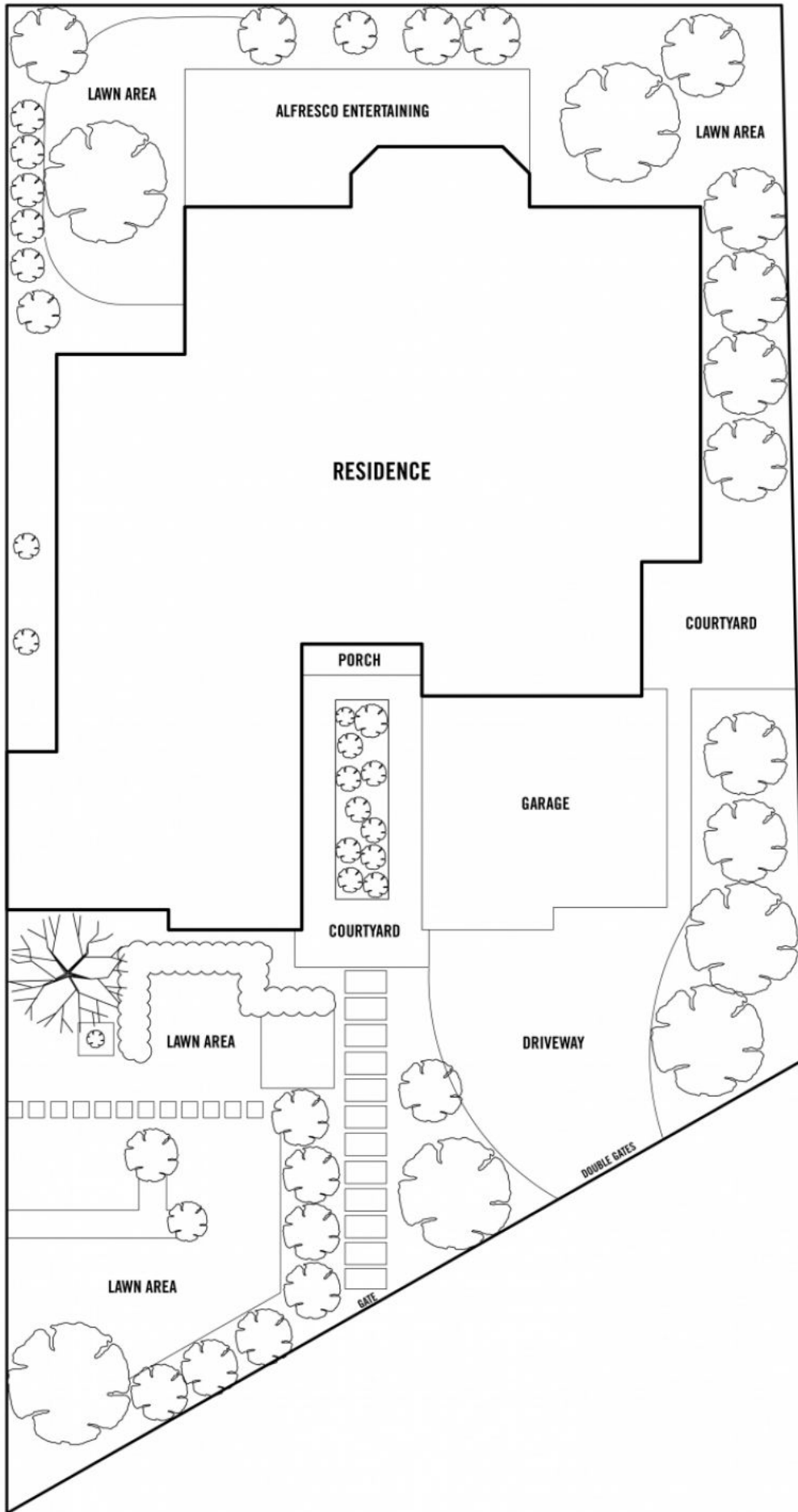


Theon Bruse
08 8431 8181



Scale in metres. This drawing is for illustration purposes only. All measurements are approximate and details intended to be relied upon should be independently verified.

Produced by **The Fotobase Group**



SITE PLAN (NOT TO SCALE)



Scale in metres. This drawing is for illustration purposes only. All measurements are approximate and details intended to be relied upon should be independently verified.

Produced by The Fotobase Group