



450A Portrush Road Linden Park SA

5 2 3

THIS IS AN AMAZING HOME SET UP FOR FAMILY LIVING. GENEROUS BEDROOM ACCOMODATION, THREE LARGE LIVING AREAS. PLUS, A WONDERFUL EXTERNAL LIVING AREA. TWO QUALITY BATHROOMS. 3 METER HIGH CEILINGS, QUALITY FITTINGS AND FIXTURES RIGHT THROUGHOUT. JUST A BRILLIANT HOME TO MOVE IN AND LIVE.

The home itself has an entrance hallway that leads to the main bedroom with an outlook and French doors to a courtyard garden area. This bedroom includes also large robes and an excellent ensuite facility with separate bath and shower area with double shower heads.

The balance of the home is set up as three other bedrooms two on the lower level and one as a room on the upper level with access from the living area stairs.

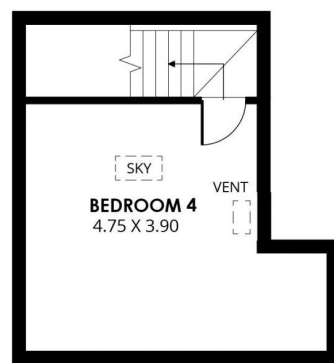
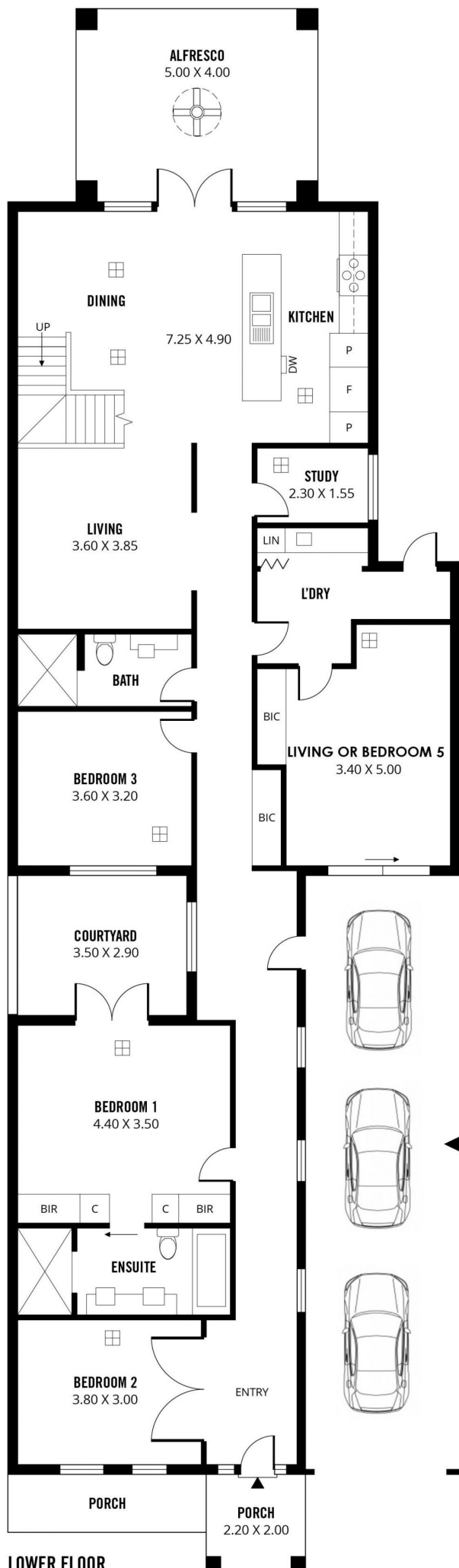
Price : \$ 1,200,000
Land Size : 449 sqm
View : <https://www.bruse.com.au/sale/sa/eastern-suburbs/linden-park/residential/house/7862536>



Bevan Bruse
08 8431 8181

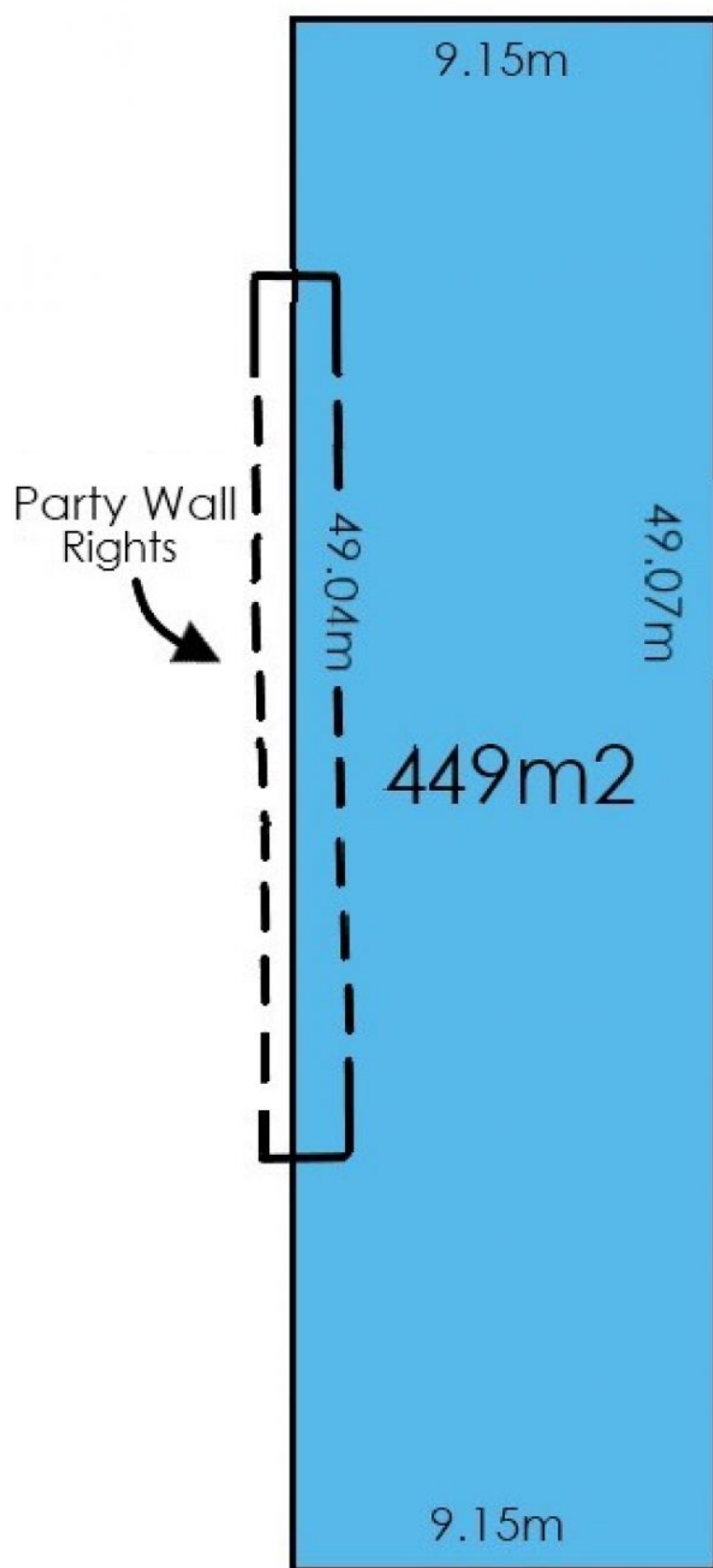


Theon Bruse
08 8431 8181



UPPER FLOOR

3.1m x 12m (approx.)



PORTRUSH ROAD