



72D Leslie Avenue Blair Athol SA

4 2 2

BUYERS WHO REQUIRE A HOME WITH EXTRA BIG LIVING ROOMS AND APPRECIATE DESIGNER STYLE WILL ABSOLUTELY LOVE THE ATTENTION TO DETAIL THE BUILDER AND DESIGNER HAVE PUT INTO THESE 2 HOMES. SO IMPRESSIVE AND HARD TO FIND WITH NEW HOMES TODAY.

72A & 72C are still available.
72B & 72D are now sold.

Highly regarded boutique builders 'Bria Constructions'. A building family business where the owners of the building company actually work 'hands on' on each property they construct. They take pride in their work.

SEPARATE TORRENS TITLE HOMES WITH SEPARATE CONSTRUCTION. GENEROUS BACKYARDS WITH PLENTY OF ROOM FOR THE CHILDREN AND GARDEN LOVERS TO ENJOY.

Fantastic location overlooking playground and Blair Athol Recreation Reserve.

DOUBLE GLAZED WINDOWS AND SLIDING DOORS THROUGHOUT.

MAIN BEDROOM SUITES ON THE GROUND LEVEL.

Price : \$ 730,000

View : <https://www.bruse.com.au/sale/sa/north-north-east-suburbs/blair-athol/residential/house/7847418>



Theon Bruse
08 8431 8181



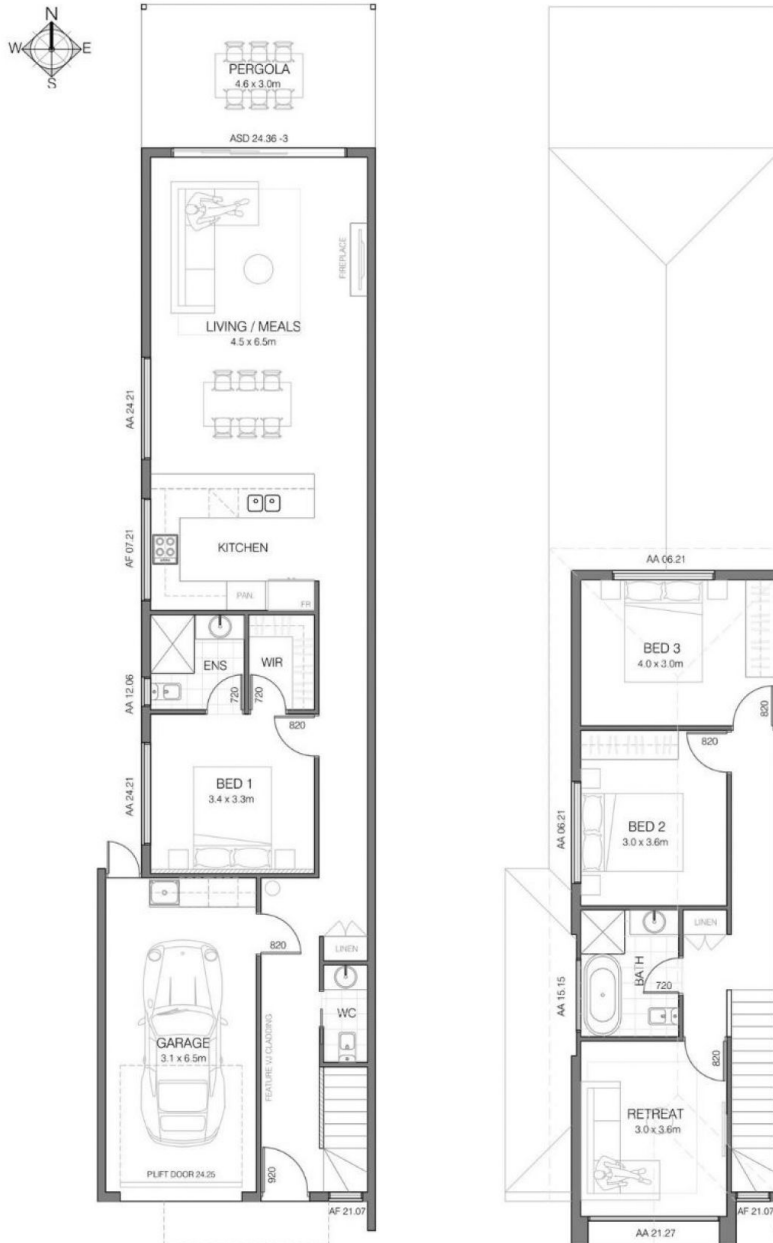
Bevan Bruse
08 8431 8181



72D RESIDENCE 1

Total House Size: 183m²

Total Land Size: 191m²



Leslie Avenue

These floorplans are for illustration purposes only and all measurements are approximate. Any fixtures shown may not necessarily be included in the sale contract and is essential that any queries are directed to the agent. Any information that is intended to be relied upon, should be independently verified. Neither the agent, vendor or contracted illustrators take any responsibility of any omission, wrongful inclusion or topographical error which may occur in these drawings as it is an artistic impression only. While every endeavor has been made to verify the correct details in the publications, neither the agent, vendor nor contracted typesetter accept liability for any error or omission.