



2/20 Randolph Avenue Parkside SA

ZONED FOR GLENUNGA INTERNATIONAL HIGH SCHOOL AND PARKSIDE PRIMARY.

A STUNNING STYLE DESIGNER HOME WAS BUILT BY PRECINCT ONE BUILDING COMPANY IN 2015 TO A VERY HIGH STANDARD AND OFFERS WHAT EVERYONE WANTS IN A NEW AGE STYLE HOME.

The home on the lower level has a generous living area and dining area measuring some 6.4m by 5.5m which is a generous room. This is adjacent to the well-equipped designer style kitchen with a large larder pantry style room which gives ample space for excellent storage.

The lower level also includes a powder room and a separate laundry facility.

3 2 2

Price : \$ 1,040,000

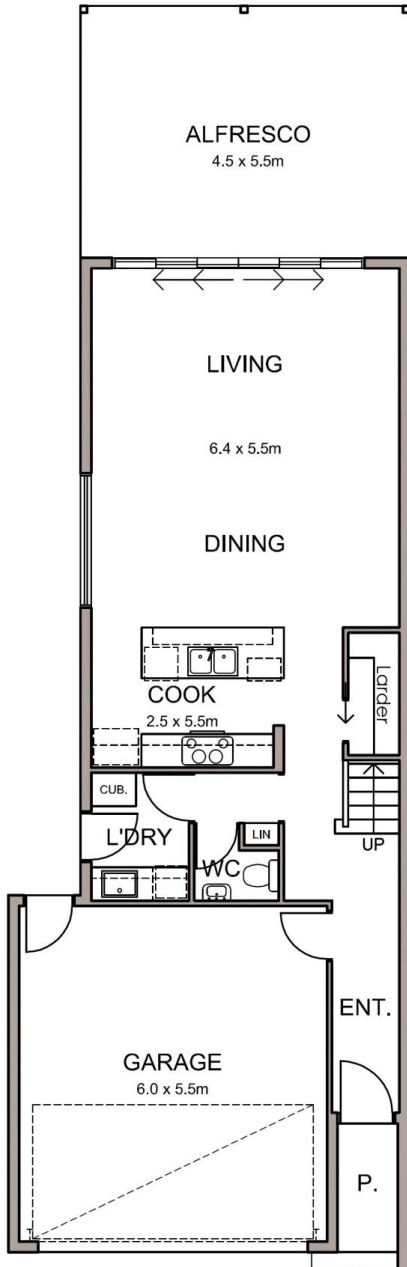
View : <https://www.bruse.com.au/sale/sa/eastern-suburbs/parkside/residential/house/7829352>



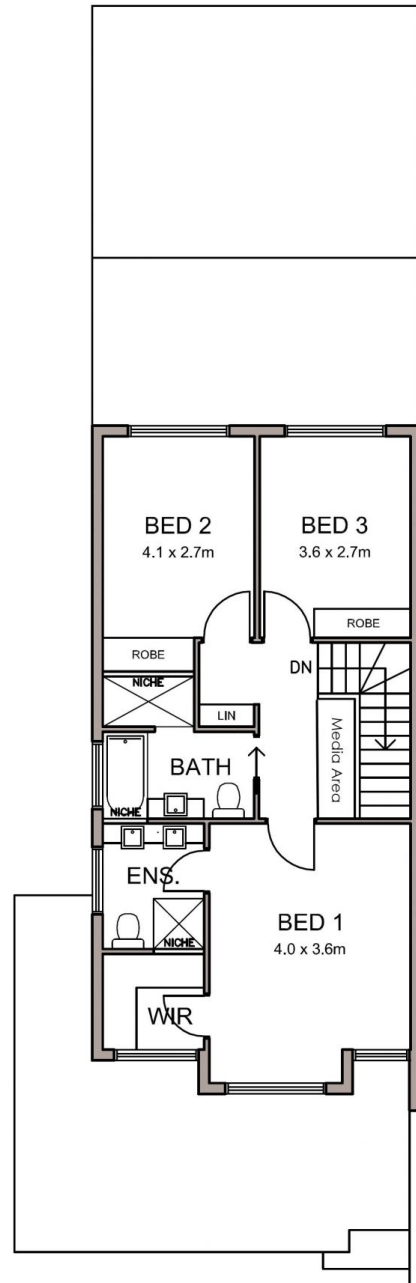
Bevan Bruse
08 8431 8181



Theon Bruse
08 8431 8181



GROUND FLOOR PLAN

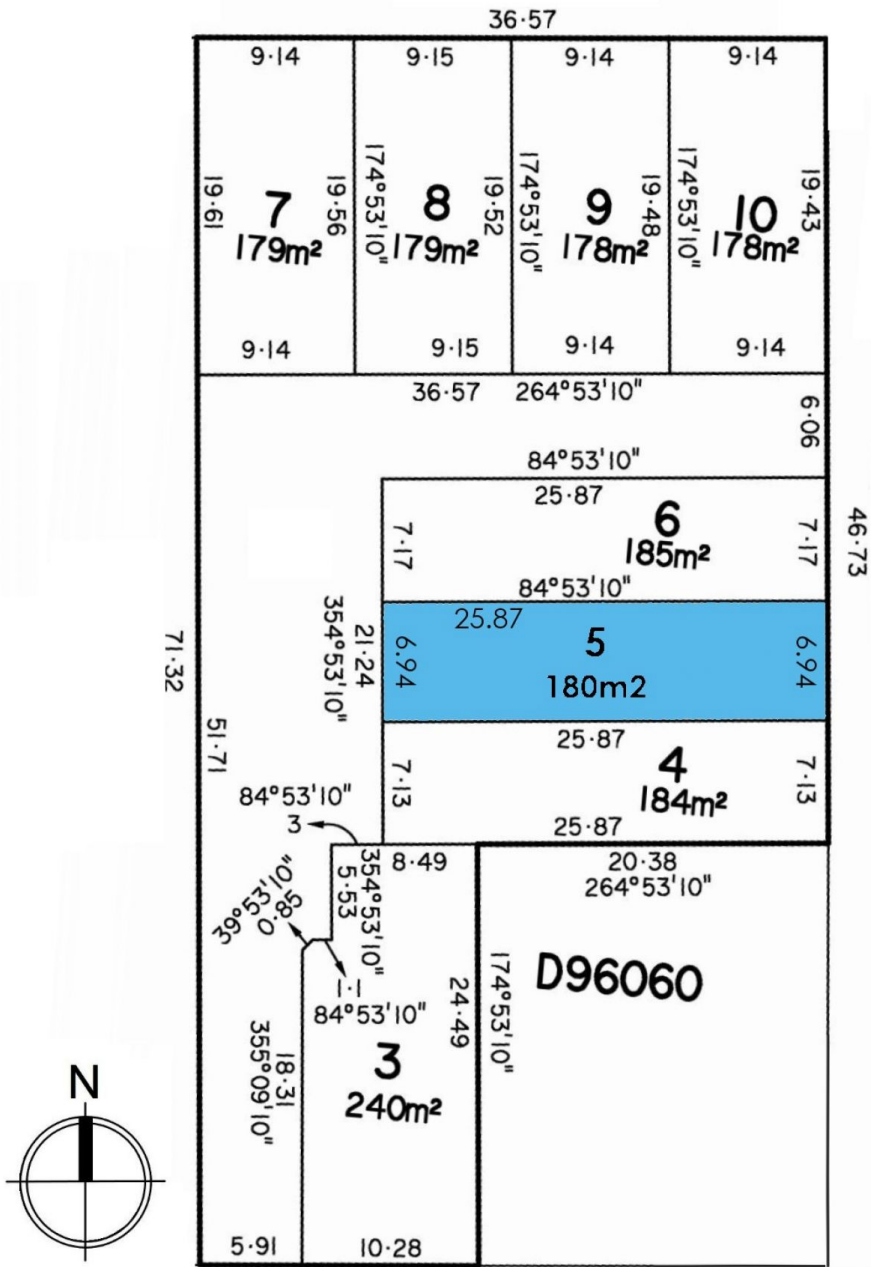


UPPER FLOOR PLAN

AREAS (sqm)

	GROUND MAIN LIVING	UPPER MAIN LIVING	GARAGE	PORCH	ALFRESCO	TOTAL
DWG 5	72.50	64.50	36.62	2.98	24.75	201.35

This floorplan is for illustration purposes only and all measurements are approximate. Any fixtures shown may not necessarily be included in the sale contract and is essential that any queries are directed to the agent. Any information that is intended to be relied upon, should be independently verified. Neither the agent, vendor or contracted illustrators take any responsibility of any omission, wrongful inclusion or topographical error which may occur in this drawing as it is an artistic impression only. While every endeavor has been made to verify the correct details in the publication, neither the agent, vendor nor contracted typesetter accept liability for any error or omission.



RANDOLPH AVENUE