



**17 Leslie Avenue Blair Athol SA**

3 2 2

ALMOST COMPLETE! BUYERS CAN MOVE IN BY THE END OF OCTOBER.

**Price** : \$ 665,000

**View** : <https://www.bruse.com.au/sale/sa/north-north-east-suburbs/blair-athol/residential/house/7761042>

CALL THEON BRUSE ON 0419 816 470 TO ARRANGE A PRIVATE INSPECTION.

Set on a lovely tree lined street and in a small & exclusive group of only 4 homes this is a living environment buyers are going to appreciate.

Built by quality boutique builders "Symphony Homes".

First home buyer incentives.  
Make the most of the FHBG of \$15k and pay NO stamp duty. (STC).

All homes have been designed to maximize the natural



**Theon Bruse**  
08 8431 8181

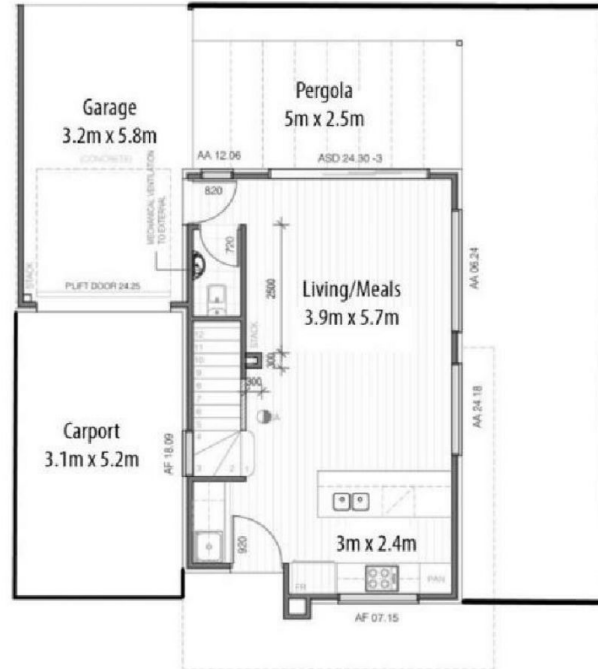


**Bevan Bruse**  
08 8431 8181

# Residence 1

Total House Size: 166m<sup>2</sup>

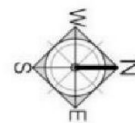
**BRUSE**  
REAL ESTATE



Ground Level



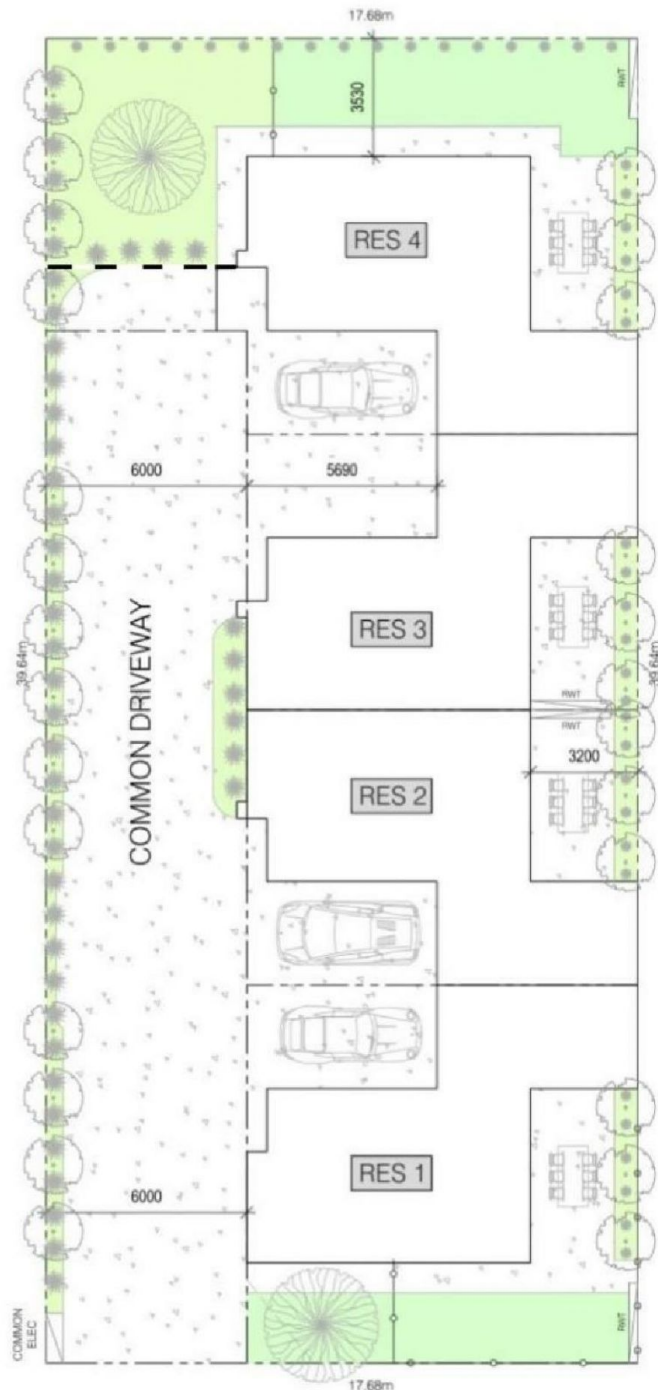
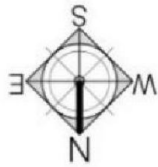
Upper Level



This floorplan is for illustration purposes only and all measurements are approximate. Any fixtures shown may not necessarily be included in the sale contract and is essential that any queries are directed to the agent. Any information that is intended to be relied upon, should be independently verified. Neither the agent, vendor or contracted illustrators take any responsibility of any omission, wrongful inclusion or topographical error which may occur in this drawing as it is an artistic impression only. While every endeavor has been made to verify the correct details in the publication, neither the agent, vendor nor contracted typesetter accept liability for any error or omission.

# SITE PLAN

**BRUSE**  
REAL ESTATE



## Leslie Avenue

This floorplan is for illustration purposes only and all measurements are approximate. Any fixtures shown may not necessarily be included in the sale contract and is essential that any queries are directed to the agent. Any information that is intended to be relied upon, should be independently verified. Neither the agent, vendor or contracted illustrators take any responsibility of any omission, wrongful inclusion or topographical error which may occur in this drawing as it is an artistic impression only. While every endeavor has been made to verify the correct details in the publication, neither the agent, vendor nor contracted typesetter accept liability for any error or omission.