



3/1 Brandreth Street Tusmore SA

2 1 1

This home unit faces Rothbury Avenue.

ANY BUYER LOOKING FOR A HOME UNIT IN THIS LOCATION WILL APPRECIATE THE QUALITY OF THIS UNIT IT IS IN EXCELLENT CONDITION AND OFFERS GENEROUS ACCOMODATION. EXCELLENT KITCHEN, EXCELLENT BATHROOM. JUST MOVE IN, LIVE AND ENJOY A WONDERFUL LIFE FOR 2024 AND ONWARDS AS THIS IS A REALLY GOOD HOME UNIT.

The front gardens of the home are attractive with a lawn area and outlook into the garden from windows of the home is spectacular.

Upon entry there is a generous living room this room is a great room, feels extremely good for a wonderful lifestyle for the future.

Price : \$ 546,000

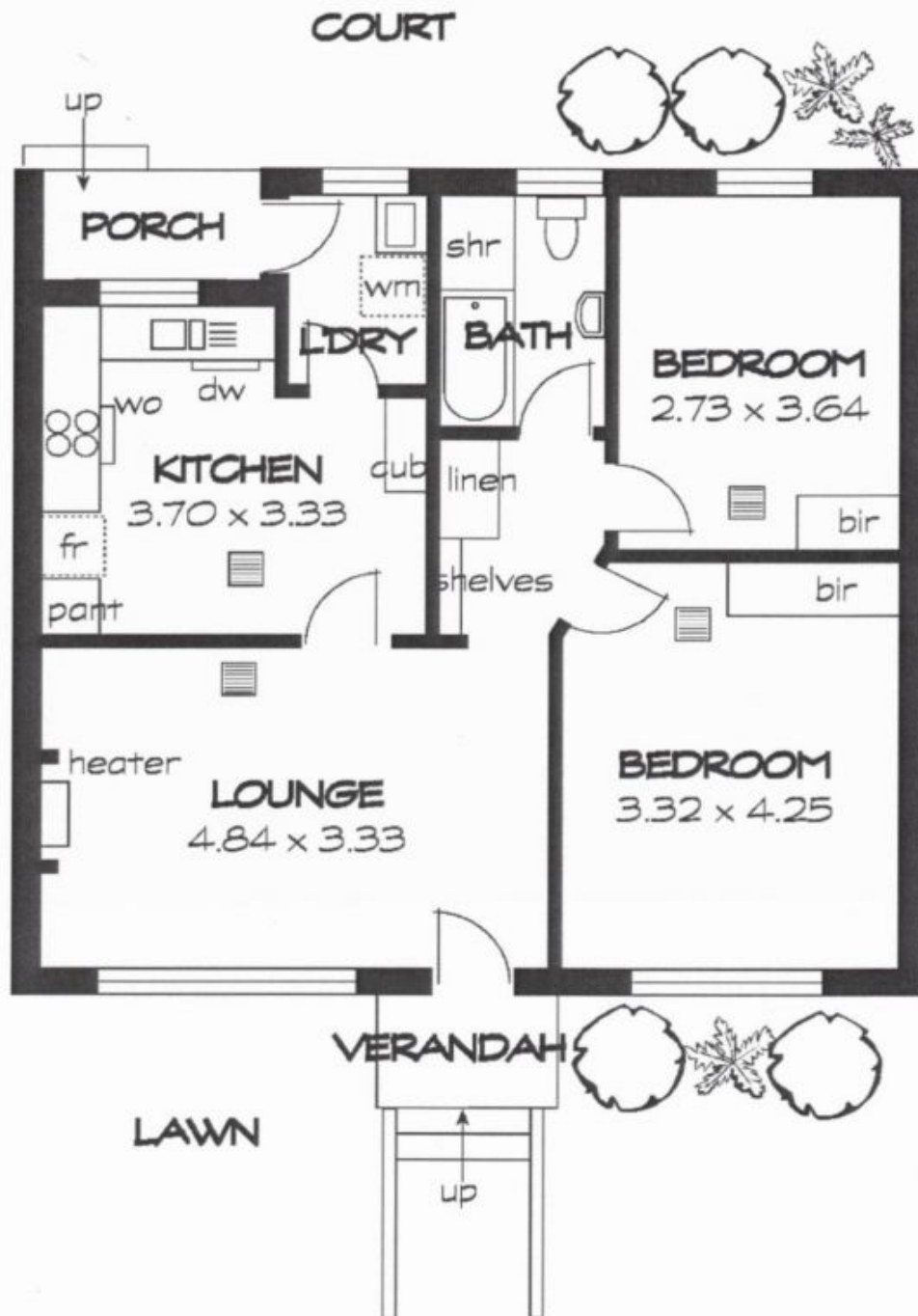
View : <https://www.bruse.com.au/sale/sa/eastern-suburbs/tusmore/residential/house/7750244>



Bevan Bruse
08 8431 8181



Theon Bruse
08 8431 8181



This floorplan is for illustration purposes only and all measurements are approximate. Any fixtures shown may not necessarily be included in the sale contract and is essential that any queries are directed to the agent. Any information that is intended to be relied upon, should be independently verified. Neither the agent, vendor or contracted illustrators take any responsibility of any omission, wrongful inclusion or topographical error which may occur in this drawing as it is an artistic impression only. While every endeavor has been made to verify the correct details in the publication, neither the agent, vendor nor contracted typesetter accept liability for any error or omission.

Brandreth Street

Rothbury Avenue

LOT 5
(ROTHBURY AVE.)
4.112

