



2/40 Florence Avenue Blair Athol SA

3 2 2

First home buyers grant & stamp duty savings available. (STC)

Price : \$ 685,000

View : <https://www.bruse.com.au/sale/sa/north-north-east-suburbs/blair-athol/residential/house/7716750>

BUYERS, THESE HOMES ARE STUNNING AND VERY SPACIOUS IN SIZE. IF YOU APPRECIATE INTERIOR DESIGN THEN YOU WILL BE VERY IMPRESSED WITH THE FINISHES AND QUALITY OF THESE HOMES.

4FRONT PROPERTY DEVELOPMENTS

Being built by an extremely good builder who takes a lot of pride in their building work. 4front property developments are a second-generation building company. Experienced and their homes show this.



Theon Bruse
08 8431 8181



Bevan Bruse
08 8431 8181

Designed by renowned architect ThreeSixFive Design Studio.

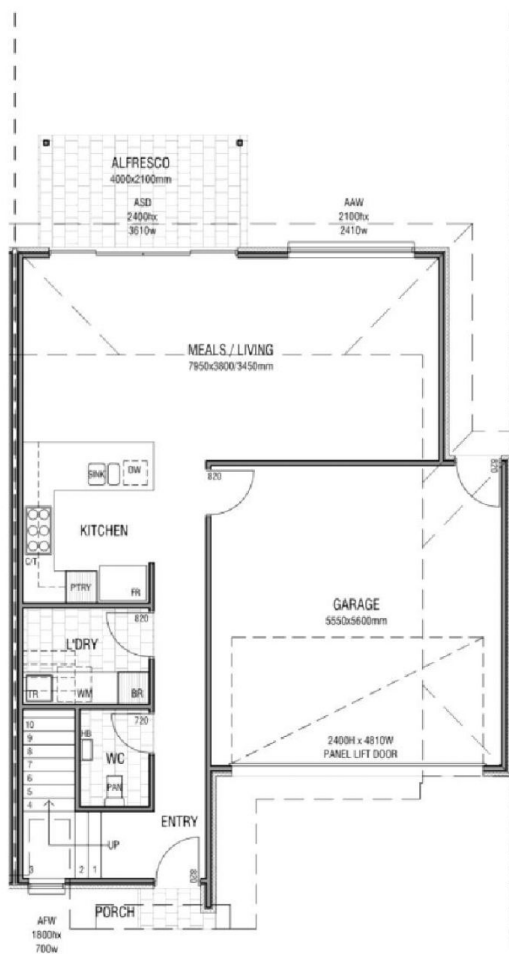
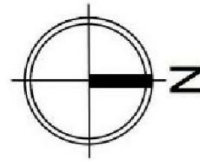
Interior designs by Adriana.

Residence 2

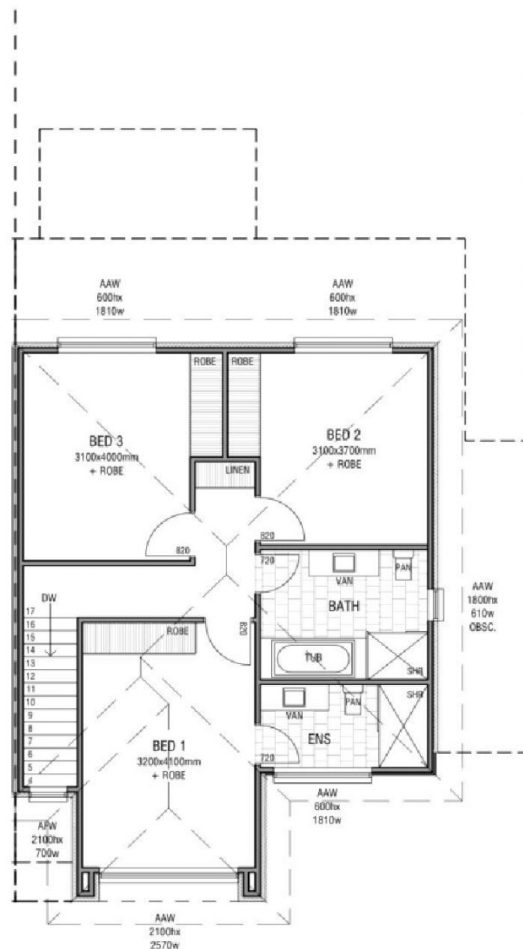
BRUSE
REAL ESTATE

Total House Size: 178.90m²

Price: \$685,000



DWELLING 2



DWELLING 2

NOTE: THIS PLAN/DOCUMENT IS FOR ILLUSTRATION PURPOSES ONLY. ALL DIMENSIONS ARE APPROXIMATE. WHILE EVERY ENDEAVOUR HAS BEEN MADE TO VERIFY THE CORRECT DETAILS NEITHER THE VENDOR, THE AGENT, NOR THE DESIGNER ACCEPT LIABILITY FOR ERROR OR OMISSION.