



View from house to the Park



30A Birdwood Terrace North Plympton SA

3 1 2

SEPARATE TORRENS TITLE.

Buyers of whom are looking for a single level home with all the modern conveniences will be impressed with this property. It features spacious internal and outside living spaces that will suit buyers from all walks of life.

Currently rented to excellent tenants via our company for \$500 per week with a lease in place until 11th of January 2024. Not long until you could move into the property as an owner occupier or a great opportunity for investors.

Very special location. Directly opposite a lovely park area and only a short walk to Rex Jones Playground and a choice of many shops, cafes and entertainment hubs to help keep your family busy.

Cleverly designed with 2 separate living spaces. To the

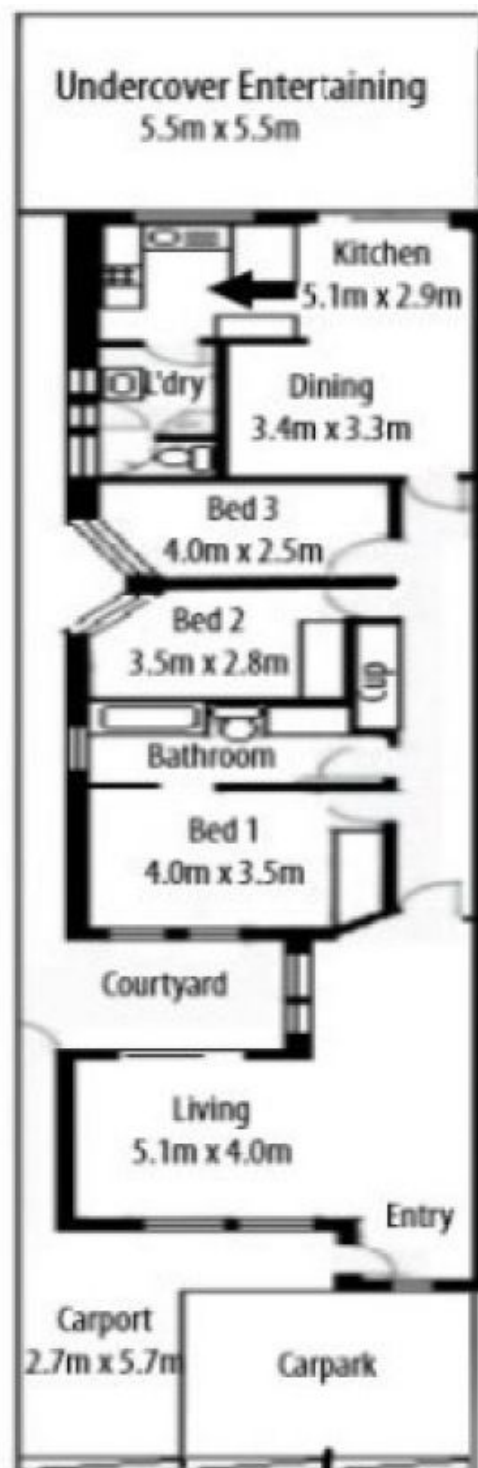
Price : \$ 671,000
Land Size : 278 sqm
View : <https://www.bruse.com.au/sale/sa/south-south-east-suburbs/north-plympton/residential/house/7711933>



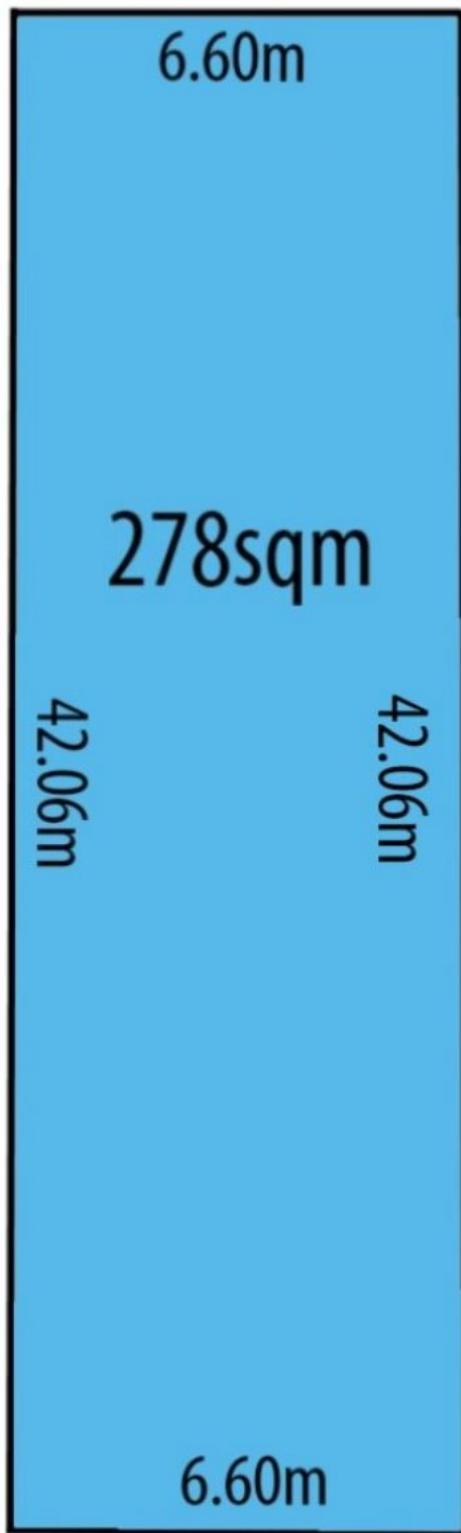
Theon Bruse
08 8431 8181



Bevan Bruse
08 8431 8181



This floorplan is for illustration purposes only and all measurements are approximate. Any fixtures shown may not necessarily be included in the sale contract and is essential that any queries are directed to the agent. Any information that is intended to be relied upon, should be independently verified. Neither the agent, vendor or contracted illustrators take any responsibility of any omission, wrongful inclusion or topographical error which may occur in this drawing as it is an artistic impression only. While every endeavor has been made to verify the correct details in the publication, neither the agent, vendor nor contracted typesetter accept liability for any error or omission.



Birdwood Terrace