



**58 Hallett Avenue Tranmere SA**

3 2 2

THIS PROPERTY IS A WONDERFUL HOME IN A VERY GOOD LOCATION, POSITIONED CLOSE TO ALL CONVENIENCES OF TRANMERE, RESERVE AND PLAYGROUND ONLY 100 METERS AROUND THE CORNER. CLOSE TO EXCELLENT SCHOOLING, SHOPPING, TRANSPORT YOU NAME IT TRANMERE HAS IT.

**Price** : \$ 1,085,000  
**Land Size** : 710 sqm  
**View** : <https://www.bruse.com.au/sale/sa/eastern-suburbs/tranmere/residential/house/7706269>

Land size 710m<sup>2</sup> with 25.09m frontage (in capacity)

The wonderful home includes an entrance hallway which leads to the open-plan living, dining and kitchen area. This very generous room is ideally set up for the lifestyle 2023.

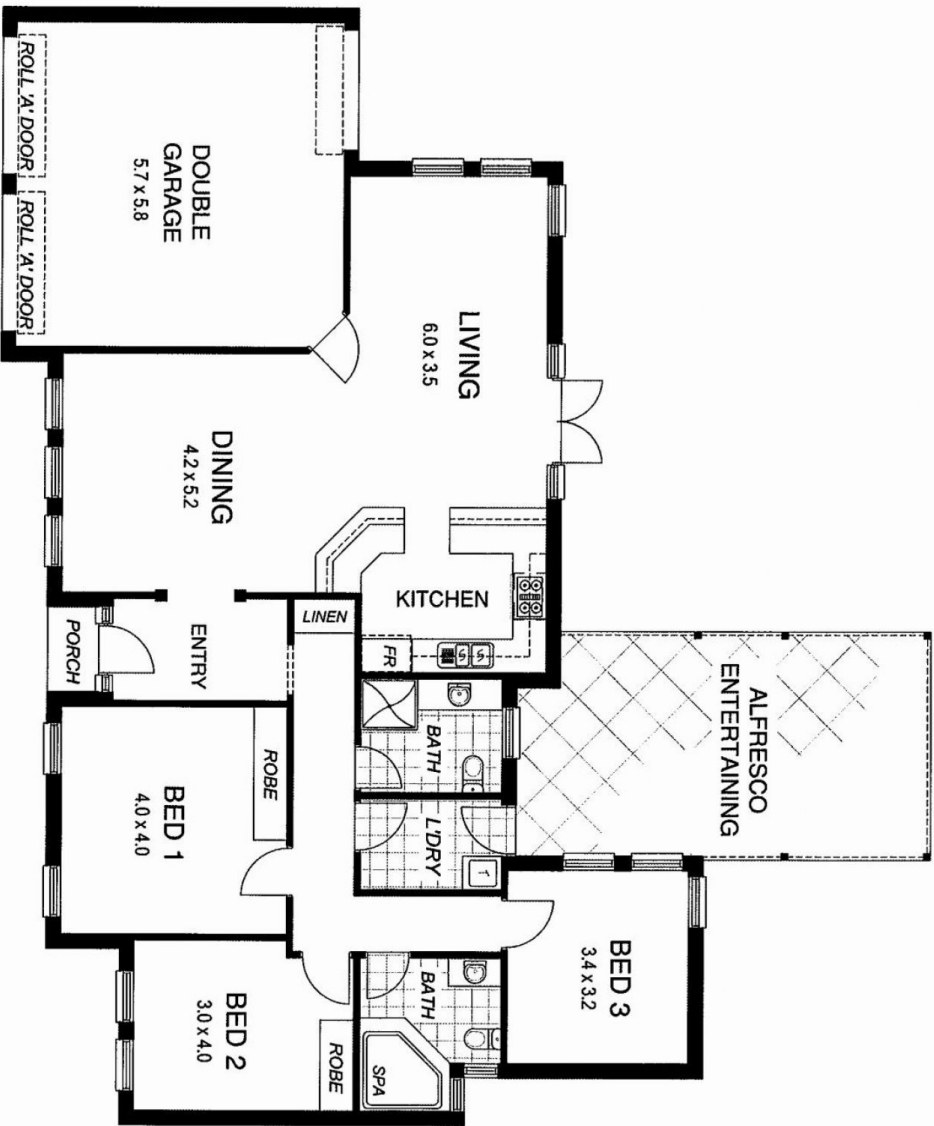
The home also has three very good-sized bedrooms two with built in robes and two-bathroom facilities. The bathrooms are both excellent rooms with quality fixtures



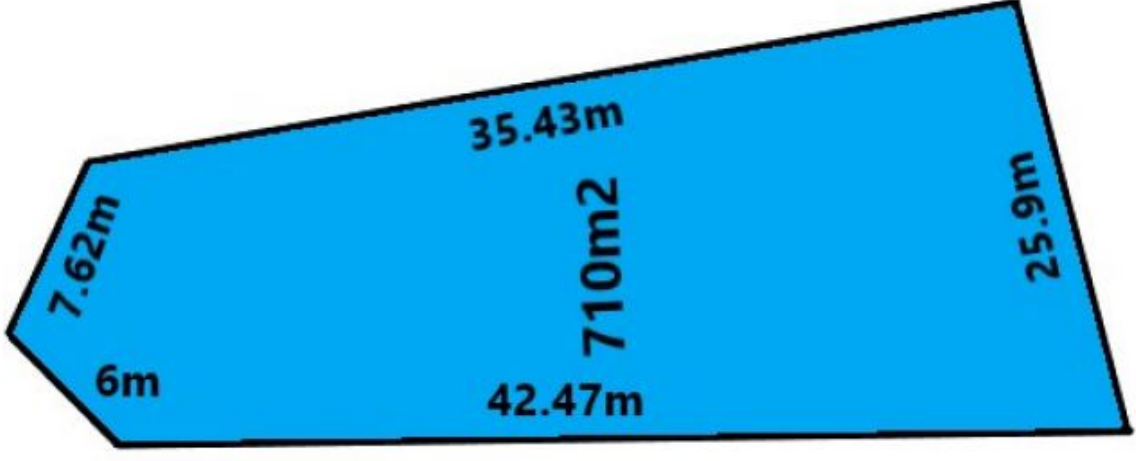
**Bevan Bruse**  
08 8431 8181



**Theon Bruse**  
08 8431 8181



Hallet



Hallett Avenue