

**5/28 Northumberland Street Tusmore SA**

2 1 3

THIS IS A REAR HOME UNIT IN AN EXCELLENT WELL-MAINTAINED GROUP IN AN AMAZING TREE LINED STREET.

OFFERING THE OPPORTUNITY FOR ANY BUYER TO HAVE A GOOD SIZE COURTYARD GARDEN AND EXTRA OFF STREET CAR PARKING FOR UP TO 2 VEHICLES PLUS THE CARPORTS.

THE GENEROUS LIVING AREAS OF THIS HOME ARE SPECTACULAR AND GIVE THE OPPOTUNITY OF HAVING A SPACIOUS HOMETTE STYLE HOME IN THE REAR OF THE GROUP SURROUNDED BY ATTRACTIVE GARDENS AND LAWN AREAS.

On entry to the unit there is a good size sitting room 4m x 3.3m which is adjacent to a 4m x 2.8m family and dining

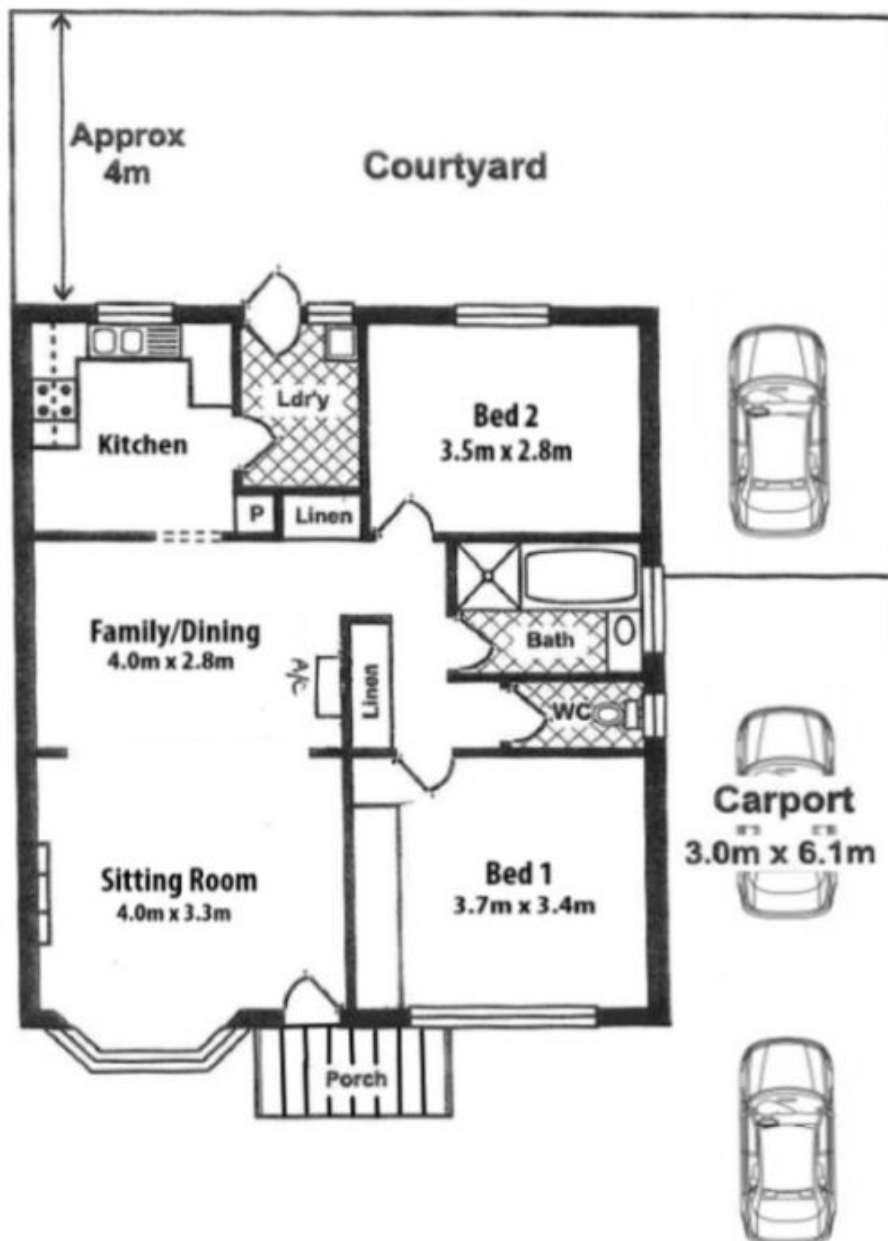
**Price** : \$ 631,500  
**View** : <https://www.bruse.com.au/sale/sa/eastern-suburbs/tusmore/residential/unit/7648127>



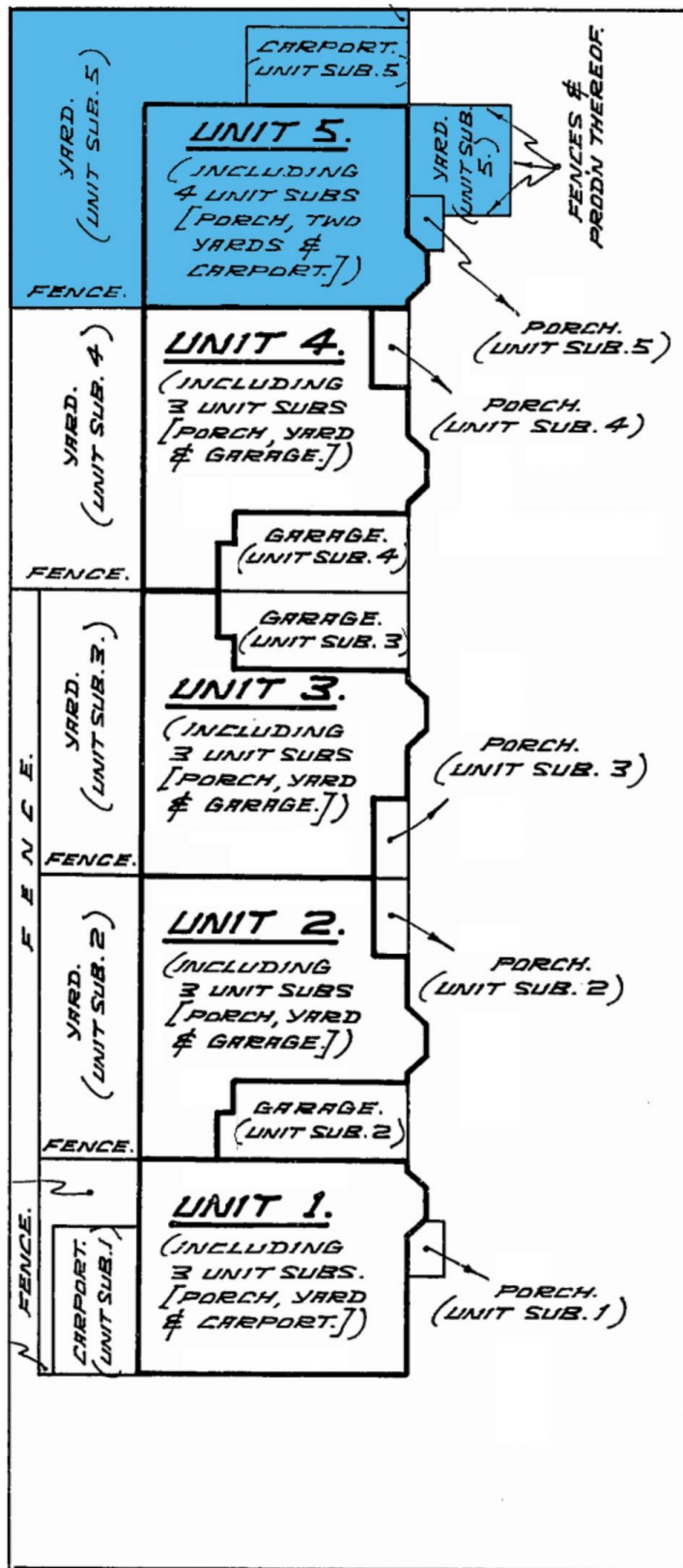
**Bevan Bruse**  
08 8431 8181



**Theon Bruse**  
08 8431 8181



This floorplan is for illustration purposes only and all measurements are approximate. Any fixtures shown may not necessarily be included in the sale contract and is essential that any queries are directed to the agent. Any information that is intended to be relied upon, should be independently verified. Neither the agent, vendor or contracted illustrators take any responsibility of any omission, wrongful inclusion or topographical error which may occur in this drawing as it is an artistic impression only. While every endeavor has been made to verify the correct details in the publication, neither the agent, vendor nor contracted typesetter accept liability for any error or omission.



NORTHUMBERLAND STREET