



#### 40 Florence Avenue Blair Athol SA

3 2 2

All 3 homes sold prior to construction commencing \$685,000 Each!

**Price** : \$ 685,000

**View** : <https://www.bruse.com.au/sale/sa/north-north-east-suburbs/blair-athol/residential/house/7639550>

ALL STREET FACING FRONTED HOMES.  
ALL WITH EXTRA LARGE BEDROOMS.  
ALL WITH VERY BIG & WIDE LIVING ROOMS.  
CHECK OUT THE ROOM SIZES ON THE FLOORPLAN?  
SO SPACIOUS!  
ALL WITH DOUBLE GARAGES.  
ALL ARE AWESOME!

First home buyers grant & stamp duty savings available.  
(STC)

THESE HOMES HAVE SOLD QUICKLY!  
ONLY HOME 2 IS STILL AVAILABLE.  
HOME 1 AND 3 HAVE BEEN SOLD.



**Theon Bruse**  
08 8431 8181



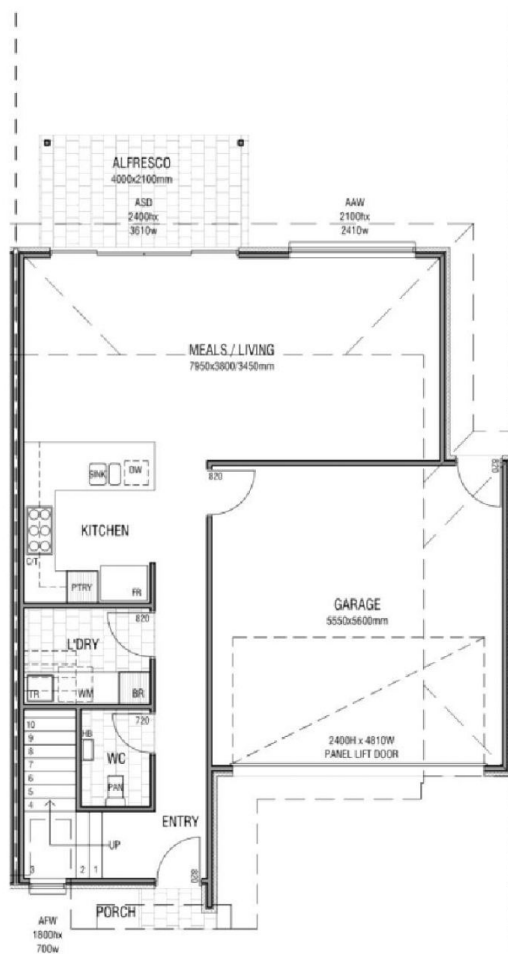
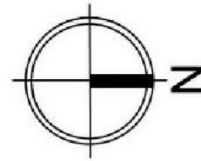
**Bevan Bruse**  
08 8431 8181

# Residence 2

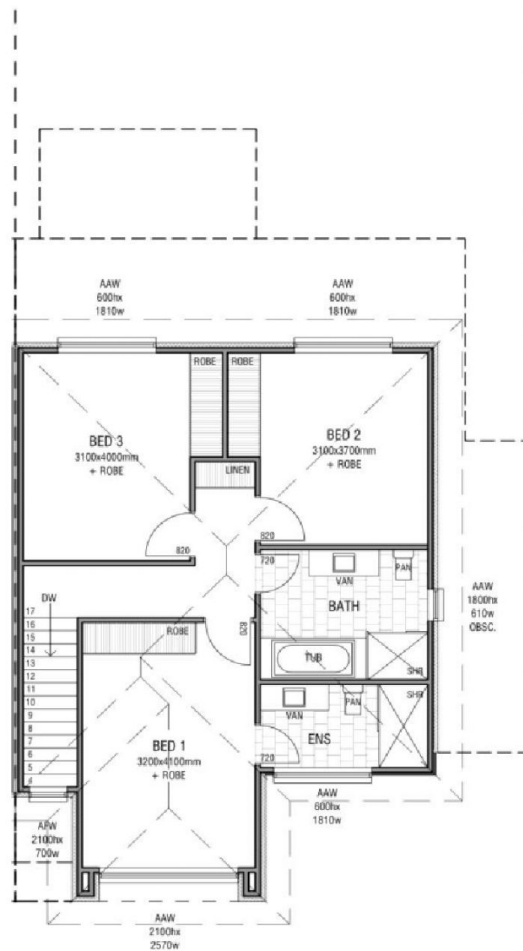
**BRUSE**  
REAL ESTATE

Total House Size: 178.90m<sup>2</sup>

**Price: \$685,000**



DWELLING 2

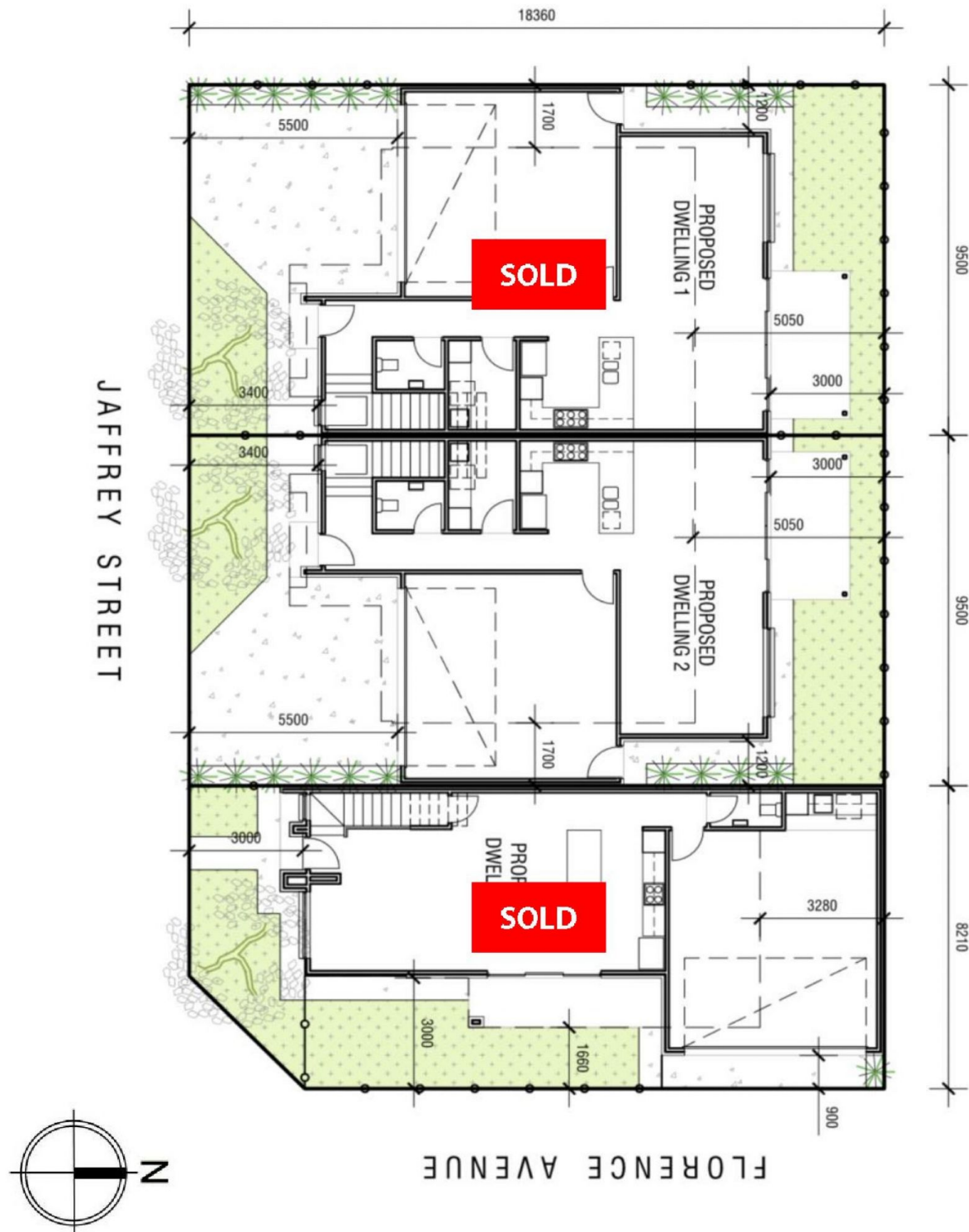


DWELLING 2

NOTE: THIS PLAN/DOCUMENT IS FOR ILLUSTRATION PURPOSES ONLY. ALL DIMENSIONS ARE APPROXIMATE. WHILE EVERY ENDEAVOUR HAS BEEN MADE TO VERIFY THE CORRECT DETAILS NEITHER THE VENDOR, THE AGENT, NOR THE DESIGNER ACCEPT LIABILITY FOR ERROR OR OMISSION.

# SITE PLAN

**BRUSE**  
REAL ESTATE



NOTE: THIS PLAN/DOCUMENT IS FOR ILLUSTRATION PURPOSES ONLY. ALL DIMENSIONS ARE APPROXIMATE. WHILE EVERY ENDEAVOUR HAS BEEN MADE TO VERIFY THE CORRECT DETAILS NEITHER THE VENDOR, THE AGENT, NOR THE DESIGNER ACCEPT LIABILITY FOR ERROR OR OMISSION.