



1/4 Kersley Avenue Avenue Glengowrie SA

3 **1** **1**

THERE ARE ONLY 2 HOME UNITS IN THIS GROUP, ONE AT THE REAR AND THIS ONE AT THE FRONT AND THEY ARE COMPLETELY SELF-CONTAINED. NO SHARED DRIVEWAY.

Price : \$ 735,000

View : <https://www.bruse.com.au/sale/sa/western-beach-side-suburbs/glengowrie/residential/unit/7600400>

The front home offers the great opportunity for having the large front land and also a driveway exclusively to the front home.

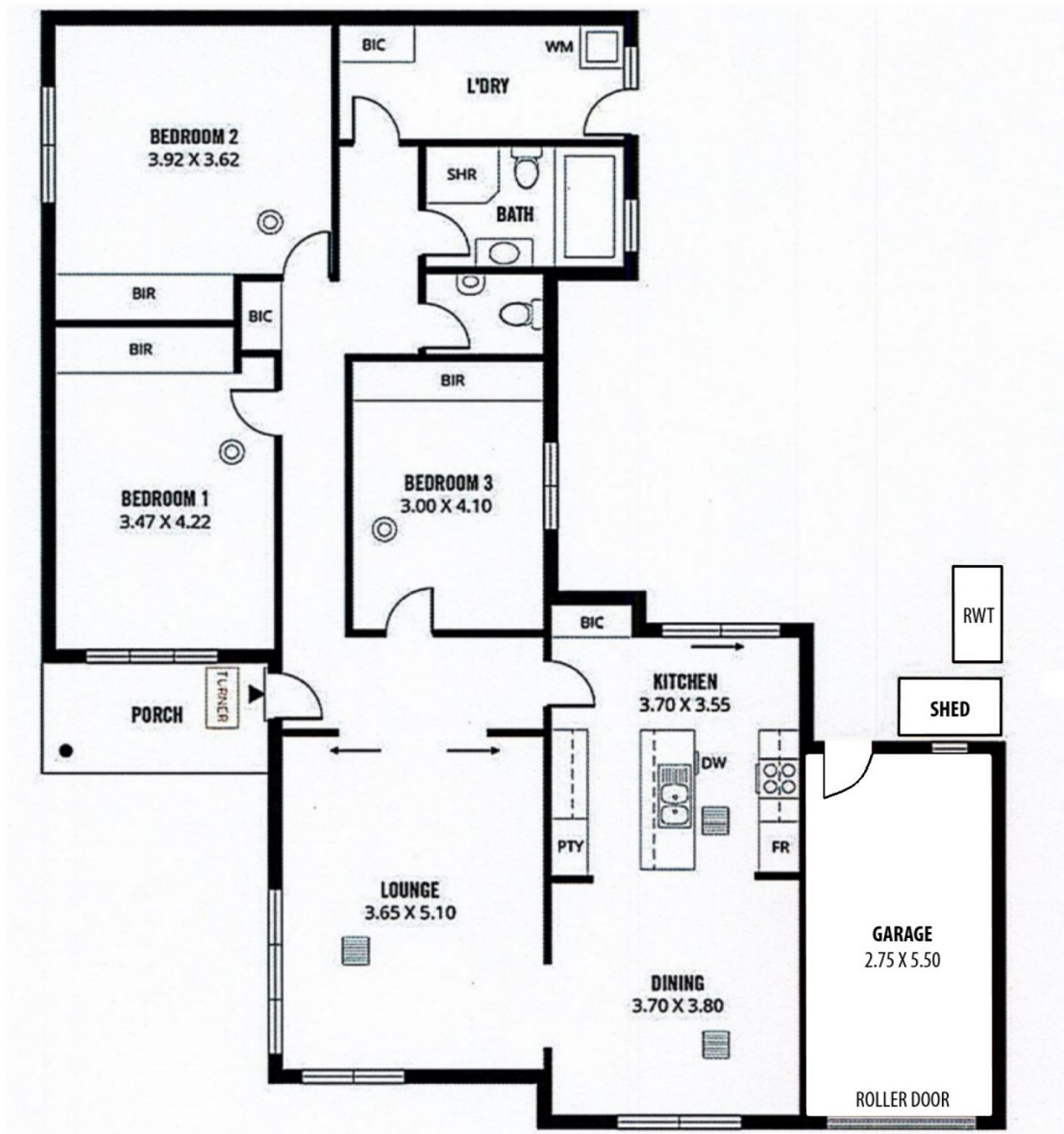
The home has an entrance hallway that leads to the large living area measuring some 3.65m X 5.10m, which is a good size room. This area is adjacent to a very good size dining room and is adjacent to a totally upgraded kitchen. The kitchen certainly will suit many buyers as it is a generous room with generous amount of cupboard and bench space, pantry, etc.



Bevan Bruse
08 8431 8181



Theon Bruse
08 8431 8181



This floorplan is for illustration purposes only and all measurements are approximate. Any fixtures shown may not necessarily be included in the sale contract and is essential that any queries are directed to the agent. Any information that is intended to be relied upon, should be independently verified. Neither the agent, vendor or contracted illustrators take any responsibility of any omission, wrongful inclusion or topographical error which may occur in this drawing as it is an artistic impression only. While every endeavor has been made to verify the correct details in the publication, neither the agent, vendor nor contracted typesetter accept liability for any error or omission.

