



1A New Cut Street Hectorville SA

3 2 2

BUYERS WHO APPRECIATE QUALITY WILL BE VERY IMPRESSED WITH THIS HOME. IT FEATURES ALL THE LITTLE THINGS THAT ACCOUNT FOR AN EXCELLENT FAMILY HOME. THE CURRENT OWNERS HAVE OWNED THE HOME SINCE NEW AND ARE VERY CLEAN PEOPLE. THEY HAVE CARED FOR THE HOME VERY WELL; IT IS LIKE NEW.

DOUBLE LENGTH FULLY ENCLOSED GARAGE. PERFECT FOR AN EXTRA STUDIO ROOM OR WORKSHOP AREA IF REQUIRED.

2 separate living areas.

Light and bright open plan everyday living and dining room on the lower level. Adjacent is the chef ready fully equipped kitchen complete with solid stone bench tops, lots of storage and quality Smeg appliances including dish washer

Price : \$ 685,000

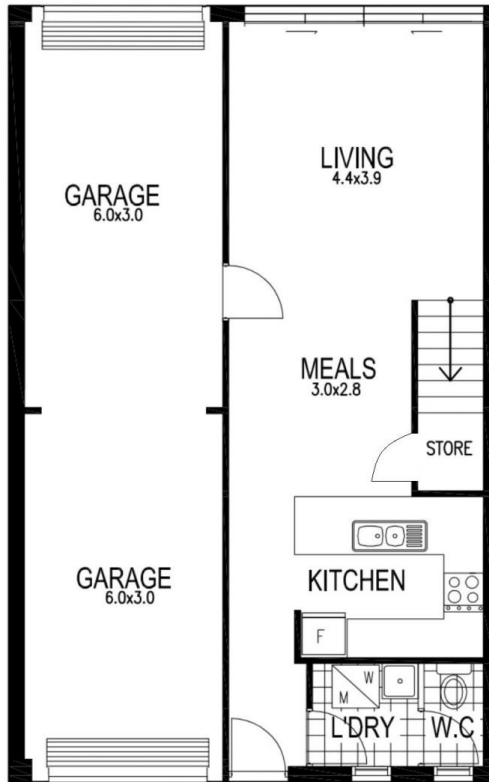
View : <https://www.bruse.com.au/sale/sa/eastern-suburbs/hectorville/residential/house/7588889>



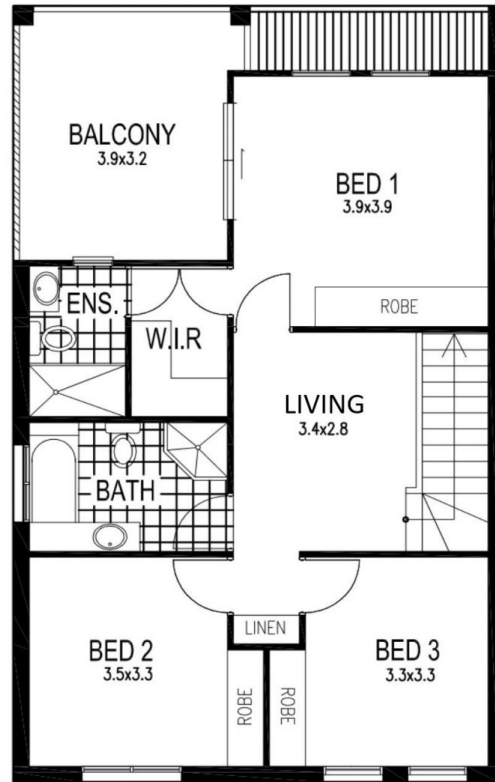
Theon Bruse
08 8431 8181



Bevan Bruse
08 8431 8181



GROUND FLOOR
DWELLING 1



UPPER FLOOR
DWELLING 1



TOTAL HOUSE SIZE: 173m²

This floorplan is for illustration purposes only and all measurements are approximate. Any fixtures shown may not necessarily be included in the sale contract and is essential that any queries are directed to the agent. Any information that is intended to be relied upon, should be independently verified. Neither the agent, vendor or contracted illustrators take any responsibility of any omission, wrongful inclusion or topographical error which may occur in this drawing as it is an artistic impression only. While every endeavor has been made to verify the correct details in the publication, neither the agent, vendor nor contracted typesetter accept liability for any error or omission.