



38 Katoomba Road Beaumont SA

5 3 2

WHEN YOU WALK INTO THIS AMAZING HOME, YOU WILL KNOW, IT JUST FEELS GOOD.

A HOME TO SUIT FAMILIES WHO ENTERTAIN BOTH INDOORS AND OUTDOORS. A VERY FLEXIBLE OPEN PLAN LIFESTYLE HOME WITH AN EXTENSIVE GLASS WALL PICTURE WINDOWS FEATURES FLOOR TO CEILING. GIVING A WONDERFUL FEELING OF SPACE AND VIEW.

Upon entry of this residence, you feel that it is an exciting family home.

WHAT A GREAT OPPORTUNITY FOR FAMILIES TO PURCHASE.

The entry to the home leads to a very large living and

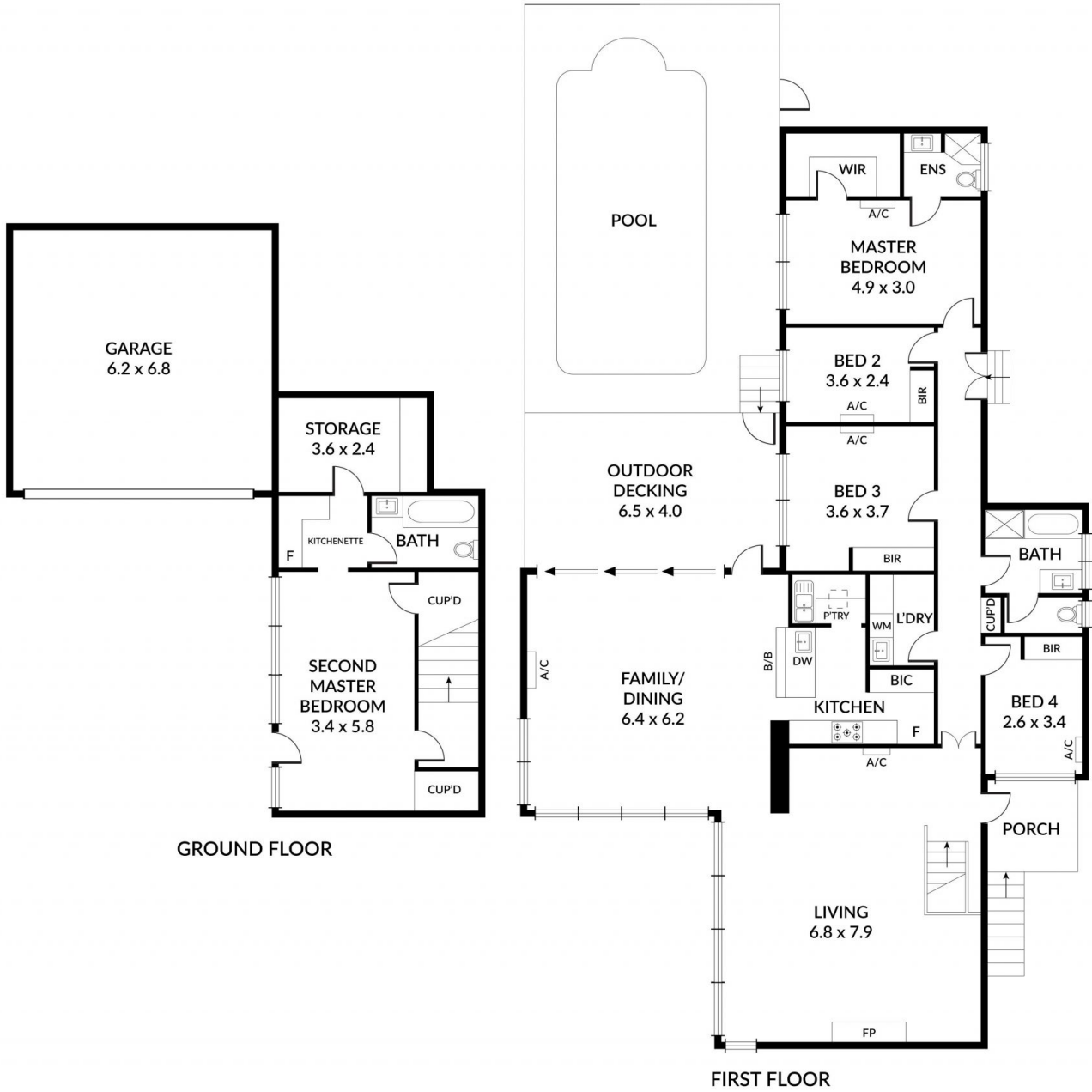
Land Size : 929 sqm
View : <https://www.bruse.com.au/sale/sa/eastern-suburbs/beaumont/residential/house/7485503>



Bevan Bruse
08 8431 8181

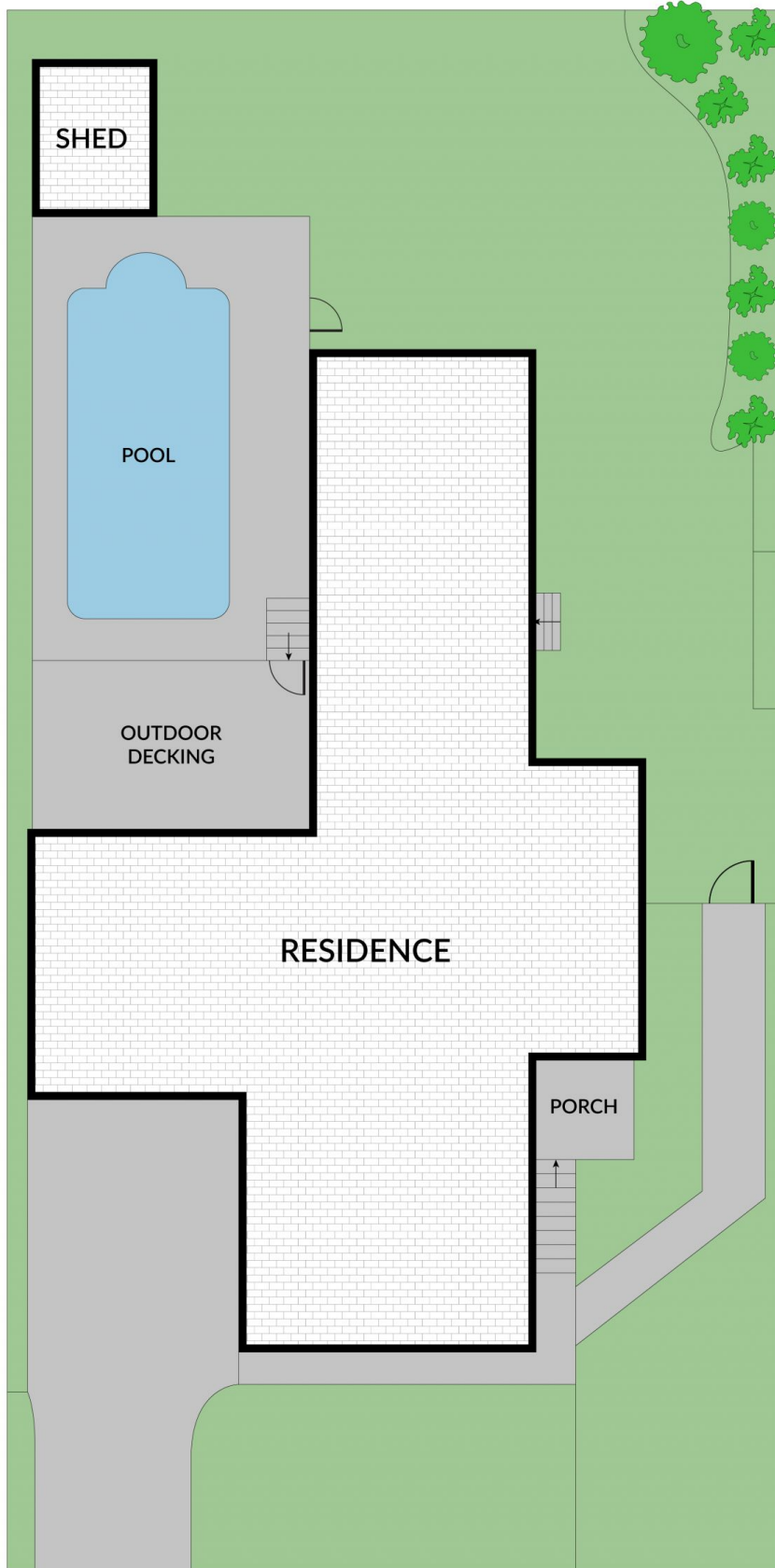


Theon Bruse
08 8431 8181



0 1 2 3 4 5

Scale in metres. Indicative only. Dimensions are approximate. All information contained herein is gathered from sources we believe to be reliable. However we cannot guarantee its accuracy and interested persons should rely on their own enquiries



38 KATOOMBA ROAD, BEAUMONT



Scale in metres. Indicative only. Dimensions are approximate. All information contained herein is gathered from sources we believe to be reliable. However we cannot guarantee its accuracy and interested persons should rely on their own enquiries