



**1/1 Elphyn Road Kingswood SA**

**2**  **1**  **1** 

NEW FLOORS.  
NEW PAINT.  
NEW OVEN COOK TOP.  
THIS HOME UNIT IS IN IMMACULATE CONDITION.

**Price** : \$ 425,000  
**View** : <https://www.bruse.com.au/sale/sa/eastern-suburbs/kingswood/residential/unit/6956551>

Buyers will love the location. Lovely tree lined streets. Surrounded by character homes. This is a great spot to live.

Front unit and single level.

Separate laundry.

Separate kitchen.

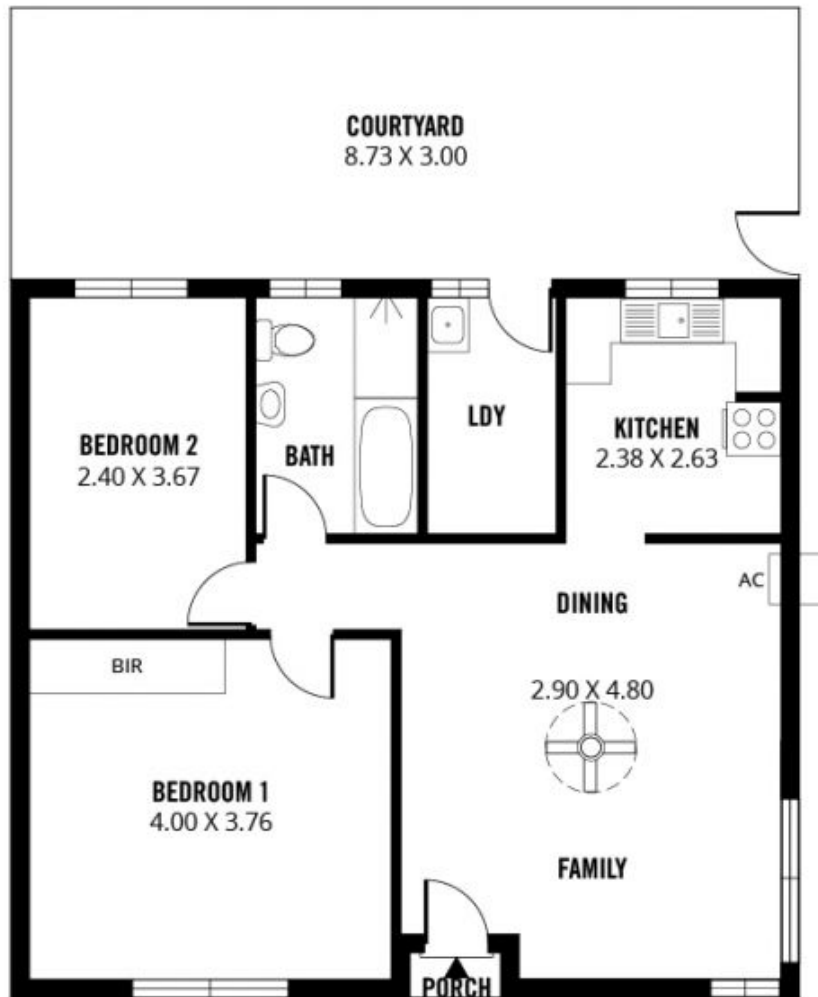
2 bedrooms. The main bedroom is very generous in size.



**Theon Bruse**  
**08 8431 8181**



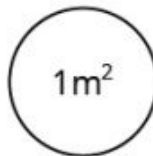
**Bevan Bruse**  
**08 8431 8181**



**TOTAL**



Living



Porch



Courtyard



Scale in metres. This drawing is for illustration purposes only. All measurements are approximate and details intended to be relied upon should be independently verified. Produced by **The Fotobase Group**