



**2/17 Richardson Avenue Tranmere SA**

4 2 2

**SOLD BY THEON BRUSE.**

LOCATED ADJACENT A PARK AND ONLY A SHORT WALK TO THE GUMS RESERVE. THIS QUIET LOCATION IS PERFECT. DRIVE PAST TO BE IMPRESSED.

Purchase now and choose your desired internal colours. A great opportunity to buy at todays price and watch the growth in-between now and completion, early next year. 10% deposit paid now and the balance on completion.

TOP SCHOOL ZONES.  
Magill Primary School.  
Norwood Morialta High School.

MAIN BEDROOM SUITE ON THE GROUND LEVEL WITH

**Price** : \$ 970,000

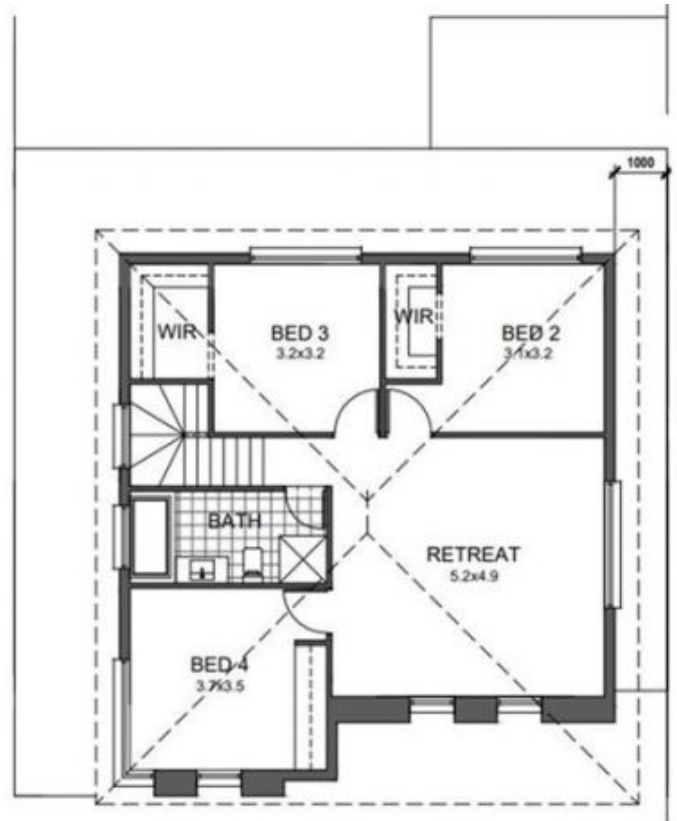
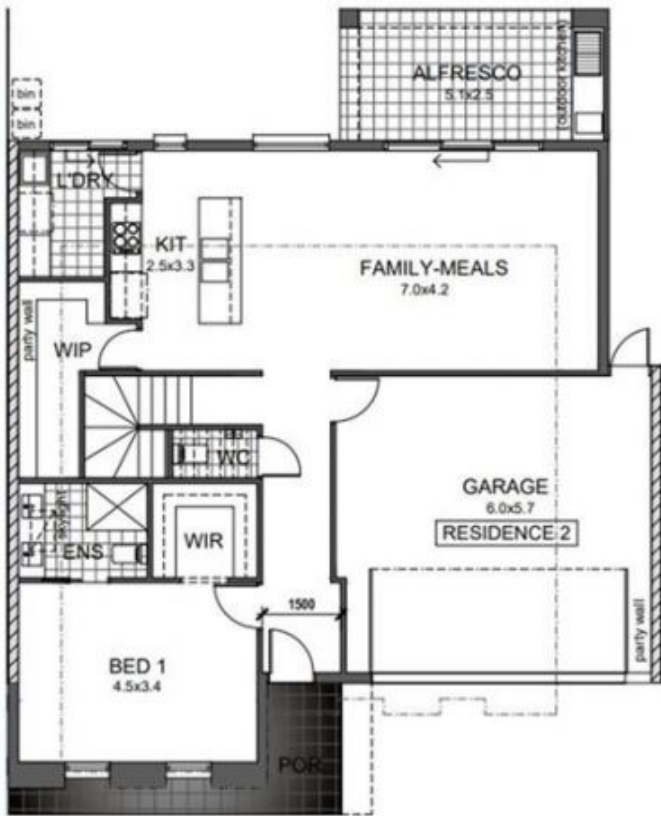
**View** : <https://www.bruse.com.au/sale/sa/eastern-suburbs/tranmere/residential/house/6942585>



**Theon Bruse**  
08 8431 8181

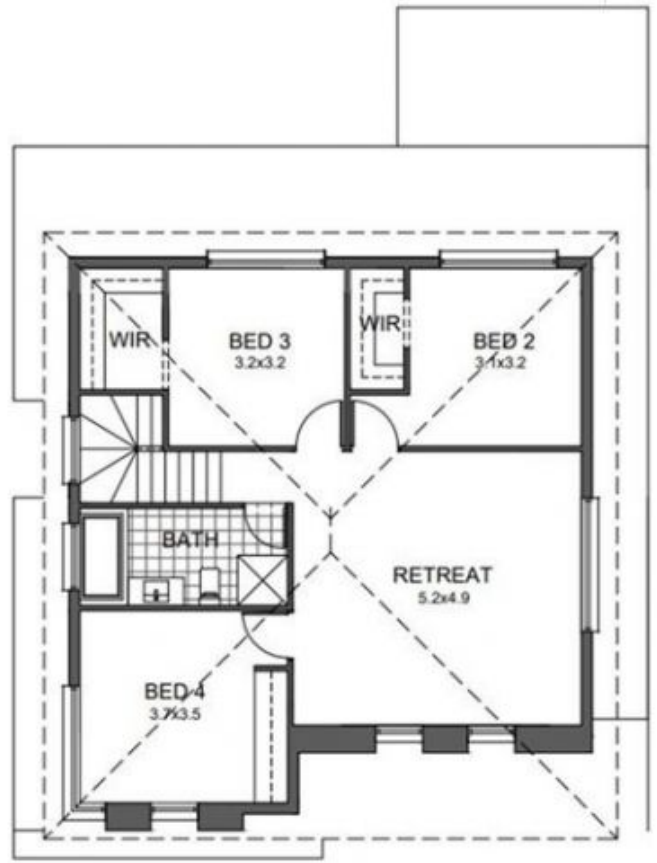
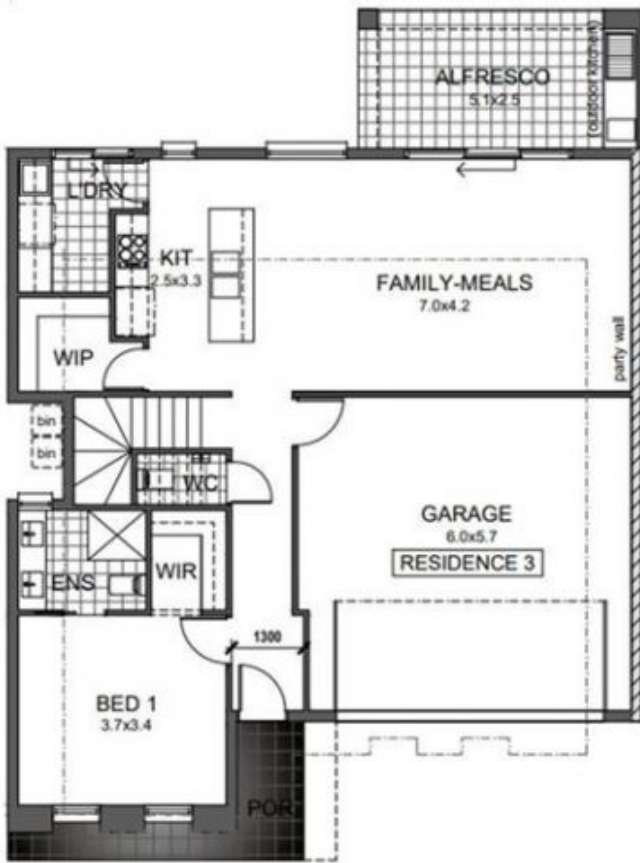


**Toby Shipway**  
8413 8181



AREAS	m2
LOWER LIVING	95.62
UPPER LIVING	88.42
GARAGE	37.72
PORCH	6.72
ALFRESCO	12.75
<b>TOTAL</b>	<b>241.23</b>

SITE AREA:	246 sqm
P.O.S:	50 sqm



AREAS	m2
LOWER LIVING	90.59
UPPER LIVING	88.39
GARAGE	34.88
PORCH	5.89
ALFRESCO	12.61
<b>TOTAL</b>	<b>232.36</b>

SITE AREA:	246 sqm
P.O.S:	50 sqm