

18C Albany Terrace Valley View SA

3 2 2

A FANTASTIC FAMILY FRIENDLY LIFESTYLE AWAITS THE BUYERS OF THESE WELL-DESIGNED NEW HOMES.

Price : \$ 510,000

View : <https://www.bruse.com.au/sale/sa/north-north-east-suburbs/valley-view/residential/house/6788234>

OPPORTUNITY TO GET IN AND PURCHASE BEFORE CONSTRUCTION STARTS AND SAVE ON STAMP DUTY COSTS. APPROXIMATELY 8 MONTHS UNTIL COMPLETION AND YOU CAN MOVE IN AND ENJOY.

18B AVAILABLE

18A (Res 1) NOW SOLD

18C (res 3) NOW SOLD

The developer has really gone above and beyond with the quality of fittings in these 3 new homes.



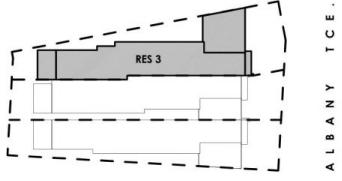
Theon Bruse
08 8431 8181



Toby Shipway
8413 8181

ALL 3 HOMES ARE TORRENS TITLED AND ALL WITH

RESIDENCE 3	
AREAS	m ²
LIVING	123.80
GARAGE	36.90
VERANDAH	11.60
PORCH	2.10
TOTAL	174.40
SITE AREA	293m ²



ALBANY T.C.E.



FLOOR PLAN

