



**22/152 Montacute Road Rostrevor SA**

2  1  1 

BUYERS LOOKING FOR A LOW MAINTENANCE TOWNHOUSE/ UNIT WILL APPRECIATE THE SPACIOUS, AIRY DESIGN AND GORGEOUS GARDEN SETTING. THIS HOME HAS SUCH A GREAT FEEL ABOUT IT.

**Price** : \$ 340,000

**View** : <https://www.bruse.com.au/6701906>

2 SEPARATE AND GENEROUS LIVING AREAS.

Fully equipped kitchen with lots of bench space.

High lofty raked ceilings to the main living room.

2 bedrooms on the upper level, both with access to the balcony. Enjoy a stretch and a lovely outlook when you awake each morning.

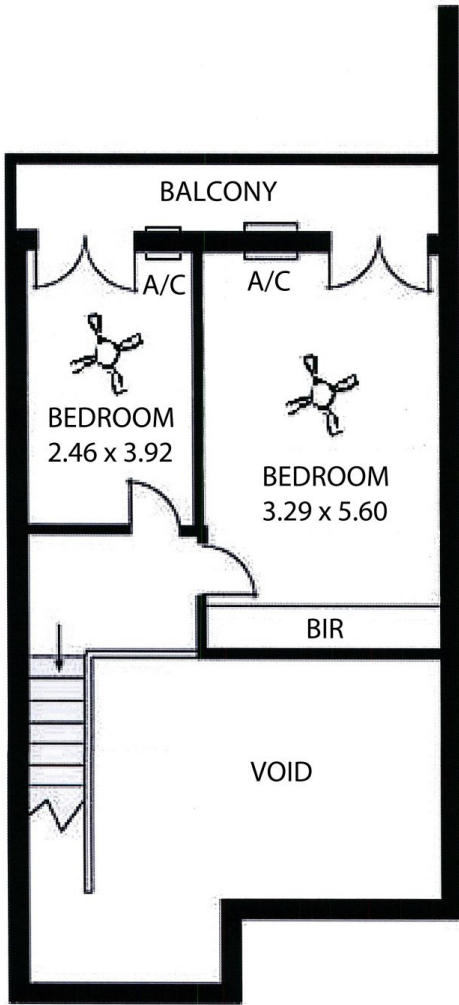
2 courtyard areas. One at the front of the house and one at



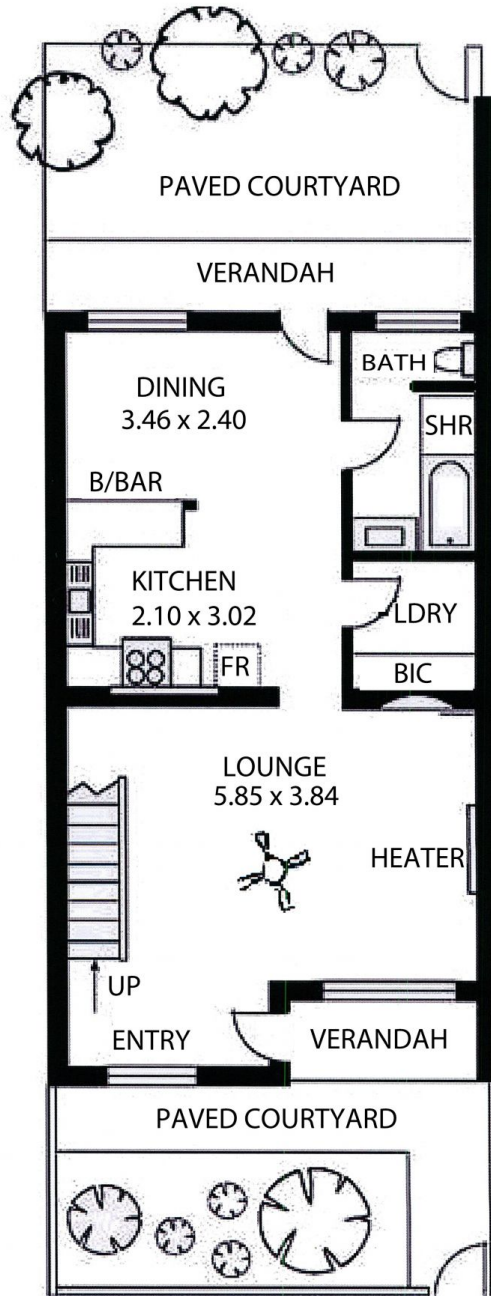
**Theon Bruse**  
08 8431 8181



**Bevan Bruse**  
08 8431 8181

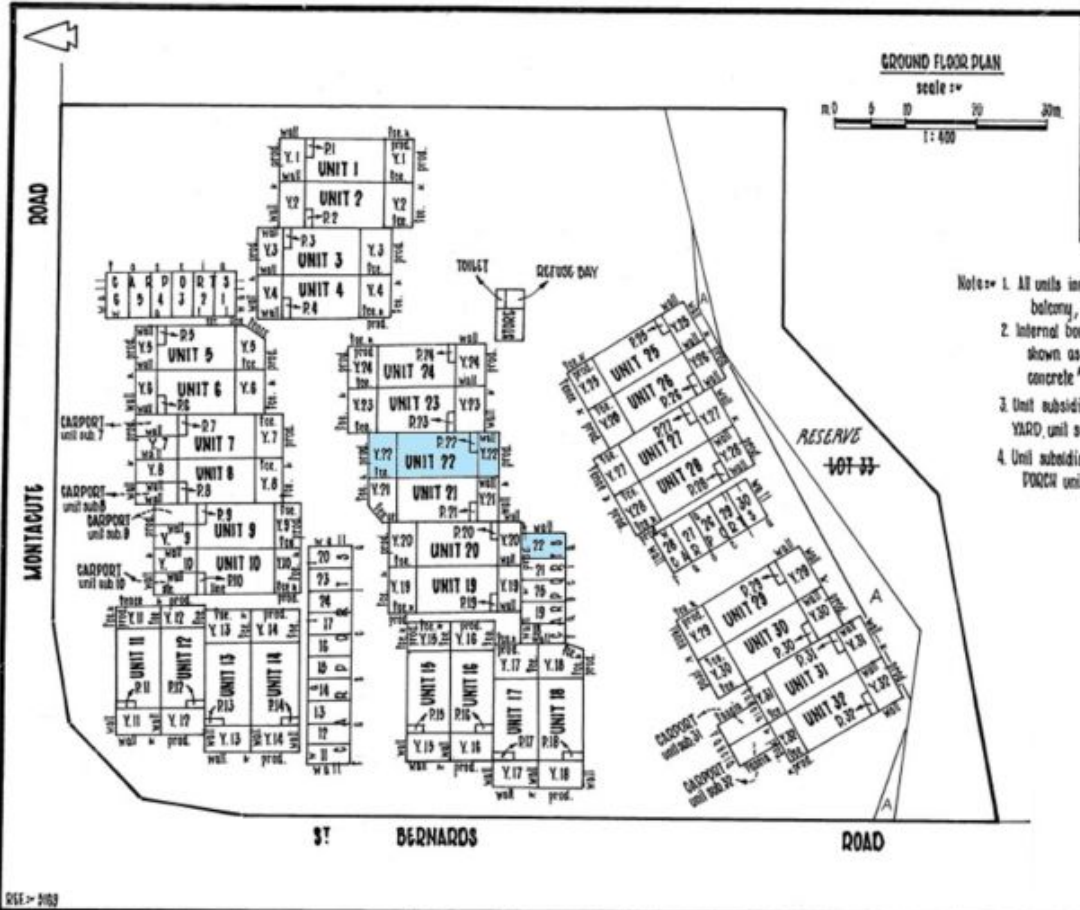


FIRST FLOOR

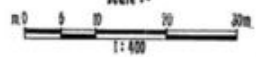


GROUND FLOOR





GROUND FLOOR PLAN  
scale 1:400



- Note:-
1. All units include 5 unit subsidiaries - carport, balcony, porch and 2 yards.
  2. Internal boundaries between unit subsidiaries shown as carports are defined by 'join in concrete' unless otherwise shown.
  3. Unit subsidiaries shown Y.1 - Y.32 refers to YARD, unit subsidiary 1 - 32 respectively.
  4. Unit subsidiaries shown P.1 - P.32 refers to PORCH, unit subsidiary 1 - 32 respectively.