



5 Thomson Place Rostrevor SA

3 2 2

**** OPEN INSPECTIONS TBC ****

View : <https://www.bruse.com.au/6658133>

NEAR NEW FAMILY HOME! Cutting edge design!

Available: Monday 18th October 2021

This two-storey home has been recently built by Dechillis Homes. The home includes high end fixtures and fittings, marble bench tops, alarm system, double garage, outdoor BBQ and sink area, large living areas and bedrooms.

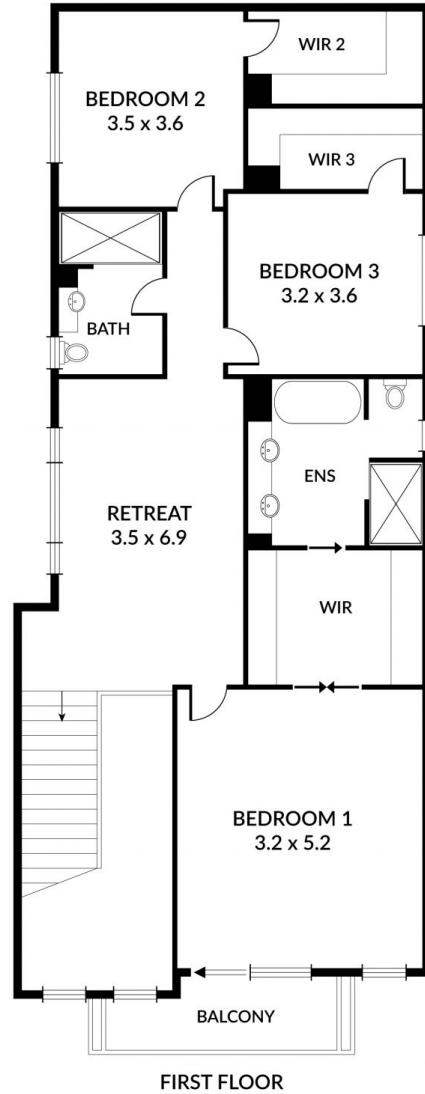
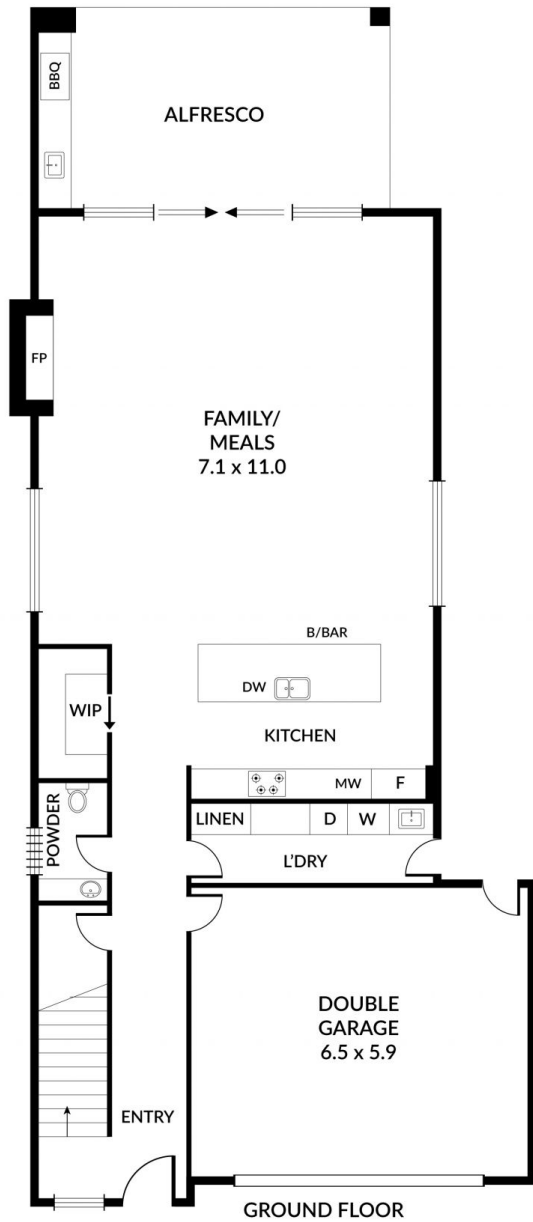
This home is a rare find in the rental market today, please call us to view!

Features are:

- Excellent landscaped rear and front gardens. Easy maintenance. Veggie patch included.



Property Management
08 8431 8181



LIVING	242M ²
GARAGE	38M ²
ALFRESCO	28M ²
BALCONY	7M ²
TOTAL	315M²



Scale in metres. Indicative only. Dimensions are approximate. All information contained herein is gathered from sources we believe to be reliable. However we cannot guarantee its accuracy and interested persons should rely on their own enquiries