



**22 Chapel Way (off Of Swan Ave) Rostrevor SA**

3 2 2

\*\* OPEN INSPECTIONS WEDNESDAY 6TH OCTOBER  
5.00-5.15PM; THURSDAY 7TH OCTOBER 12.05-12.20PM  
\*\*

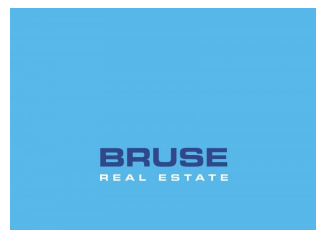
**View :** <https://www.bruse.com.au/lease/sa/eastern-suburbs/rostrrevor/residential/house/6559171>

AVAILABLE TO MOVE INTO A BRAND NEW HOME!

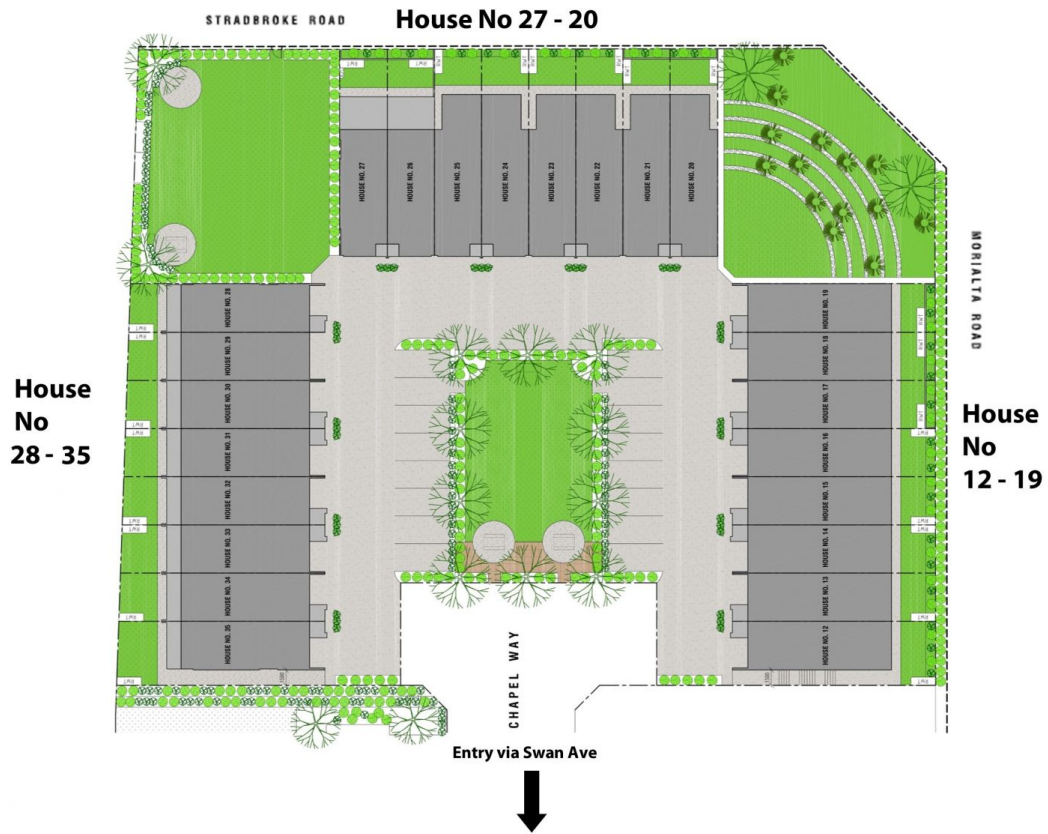
NEWLY BUILT 3 BEDROOM HOME! Features an outlook from the balcony over Morialta Reserve!

LIVE IN THIS WONDERFUL ESTATE OF NEW HOMES. SURROUNDED BY QUALITY HOMES, PARKS & GARDENS.

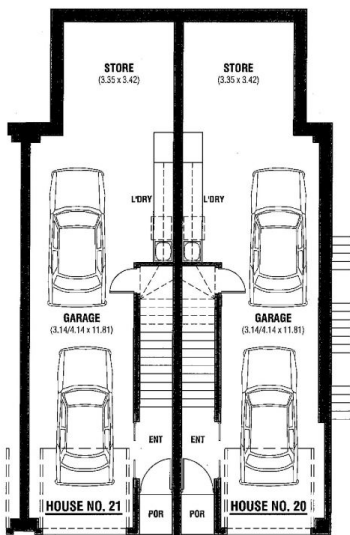
THIS HOME IS BUILT ON THREE LEVELS WITH A DOUBLE LENGTH GARAGE ON THE LOWER LEVEL. Excellent laundry facilities are also located on the lower level.



**Property Management**  
**08 8431 8485**

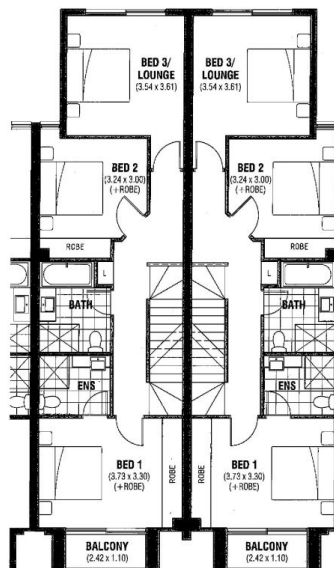


### House No. 21 & 20



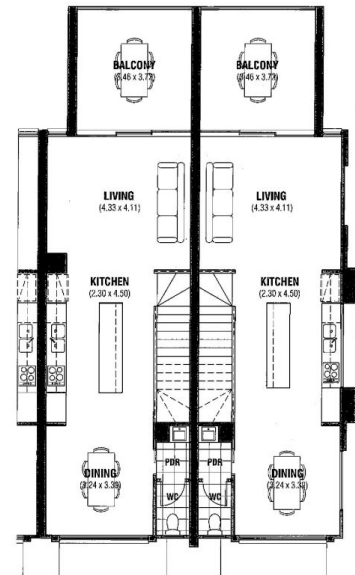
**GROUND FLOOR PLAN**

SCALE 1:100



**FIRST FLOOR PLAN**

SCALE 1:100



**SECOND FLOOR PLAN**

SCALE 1:100

| AREAS (NO. 21)      |               | AREAS (NO. 20)      |               |
|---------------------|---------------|---------------------|---------------|
| GROUND FLOOR GARAGE | 58.77         | GROUND FLOOR GARAGE | 59.43         |
| FIRST FLOOR LIVING  | 70.29         | FIRST FLOOR LIVING  | 70.32         |
| SECOND FLOOR LIVING | 56.84         | SECOND FLOOR LIVING | 56.46         |
| BALCONY (REAR)      | 14.58         | BALCONY (REAR)      | 14.58         |
| BALCONY (FRONT)     | 5.56          | BALCONY (FRONT)     | 5.56          |
| PORCH               | 1.36          | PORCH               | 1.36          |
| <b>TOTAL</b>        | <b>215.02</b> | <b>TOTAL</b>        | <b>217.59</b> |