



**2A Addiscombe Place Unley Park SA**

3  1  1 

**\*\* OPEN INSPECTIONS CANCELLED - NOW LEASED \*\***

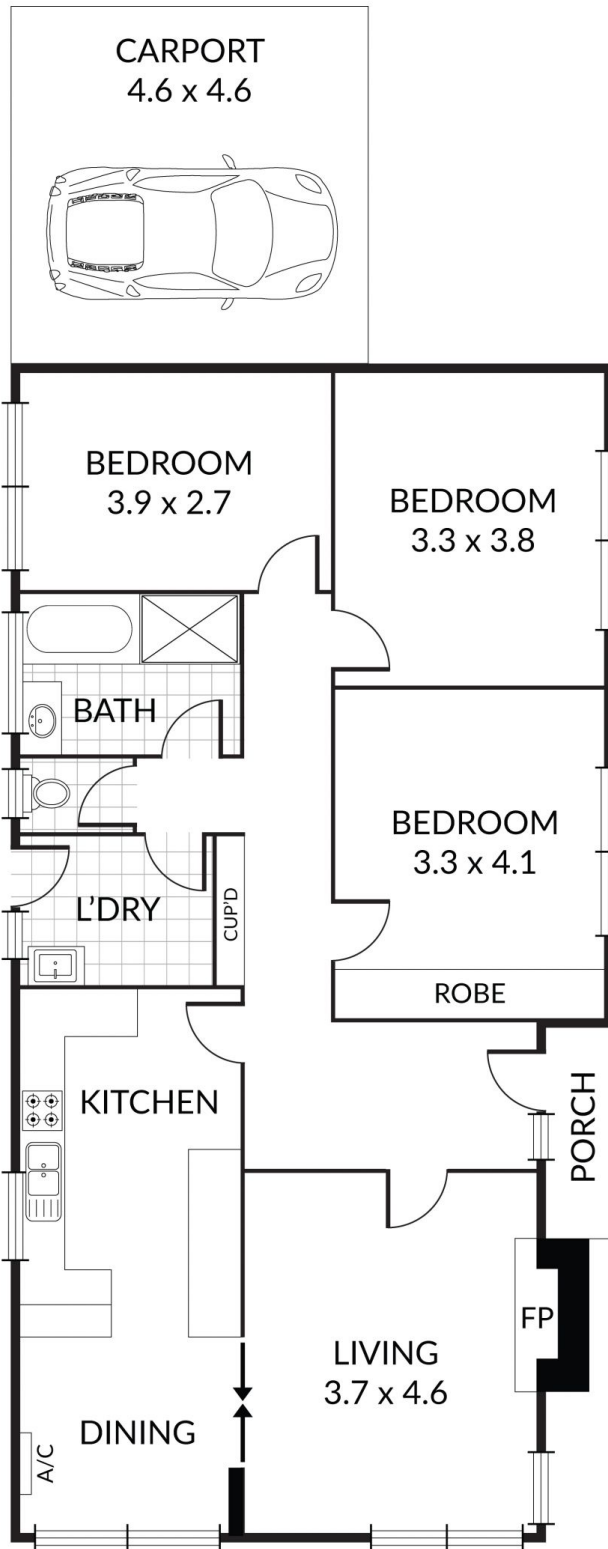
**SPACIOUS 3 BEDROOM HOME - BEAUTIFUL GARDEN SETTING!**

This colonial style home is situated in the exclusive suburb of Unley Park. The home is located opposite the "Heywood Park" including an excellent playground area.

Close to Adelaide's leading schools and the fashionable cafes, restaurants and boutique shopping on King William Rd and Unley Rd. Close to transport and the CBD. A great opportunity to move in and enjoy!

This home offers a beautiful garden setting, landscaped garden beds, lawn area and veggie patch. Polished timber floors, light filled rooms, secure entry through electric

**View :** <https://www.bruse.com.au/lease/sa/eastern-suburbs/unley-park/residential/house/6487204>



INTERNAL AREAS	100 M2
EXTERNAL AREAS	21 M2
<b>TOTAL</b>	<b>121 M2</b>

Scale in metres. Indicative only. Dimensions are approximate. All information contained herein is gathered from sources we believe to be reliable. However we cannot guarantee its accuracy and interested persons should rely on their own enquiries