



### 36 Jackson Terrace Enfield SA

3 2 2

BUYERS WHO ARE LOOKING FOR A SINGLE LEVEL HOME WILL LOVE THIS FAMILY FRIENDLY HOME.

It is in a top location that is extremely popular with buyers.

DOUBLE LOCK UP GARAGE

AWESOME CHEF READY KITCHEN WITH LOTS OF BENCH SPACE AND A HUGE WALK IN PANTRY.

3 BEDROOMS AND 2 BATHROOMS.

The main bedroom suite is privately positioned at the front of the home with a lovely garden outlook. Ensuite, bathroom and walk in robe, it is a great set up.

From a separate wing you will find the 2nd & 3rd bedrooms and well-designed main bathroom set up as a 3-way design to suit busy families.

**Price** : \$ 580,000

**Land Size** : 307 sqm

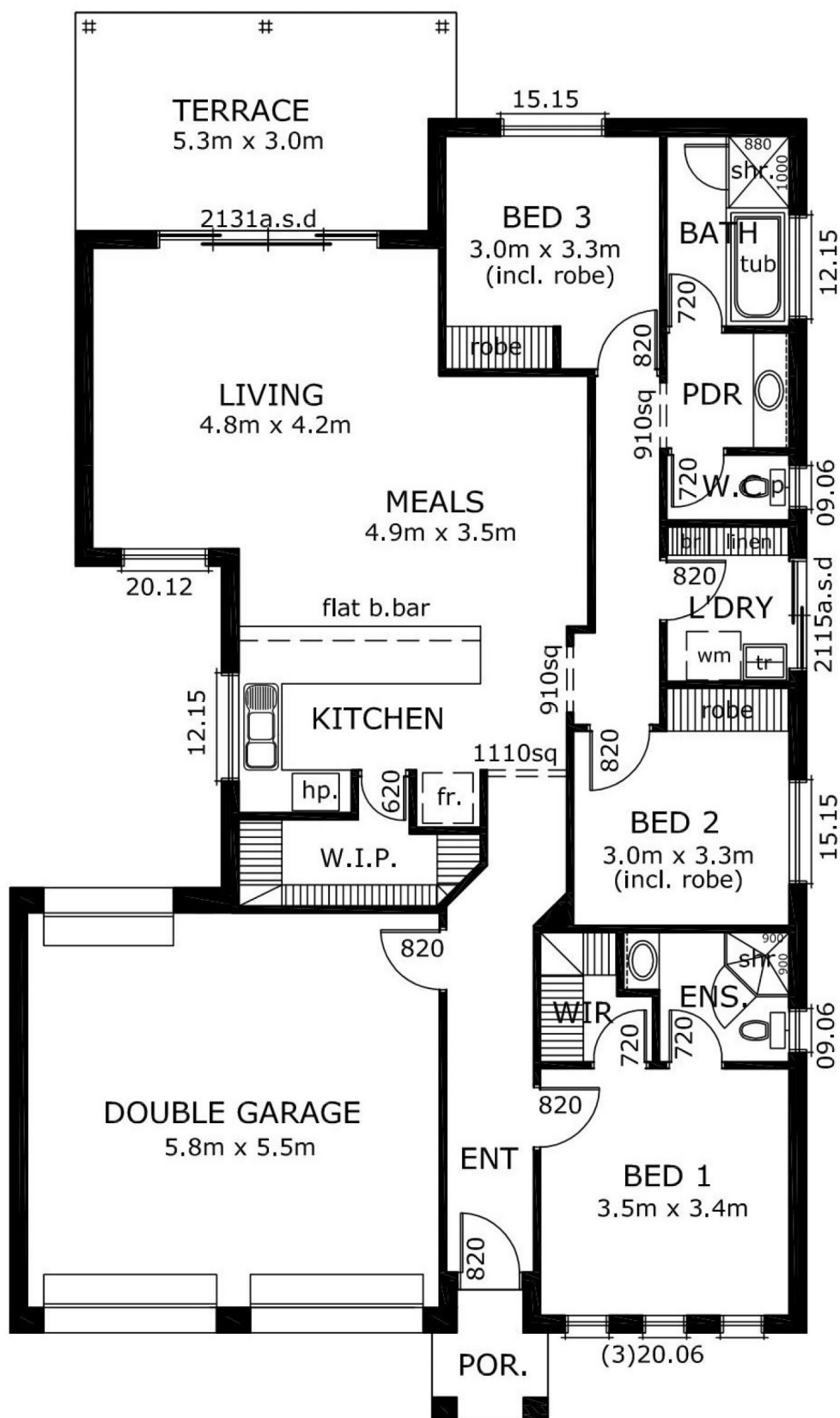
**View** : <https://www.bruse.com.au/sale/sa/north-north-east-suburbs/enfield/residential/house/6462945>



**Theon Bruse**  
08 8431 8181

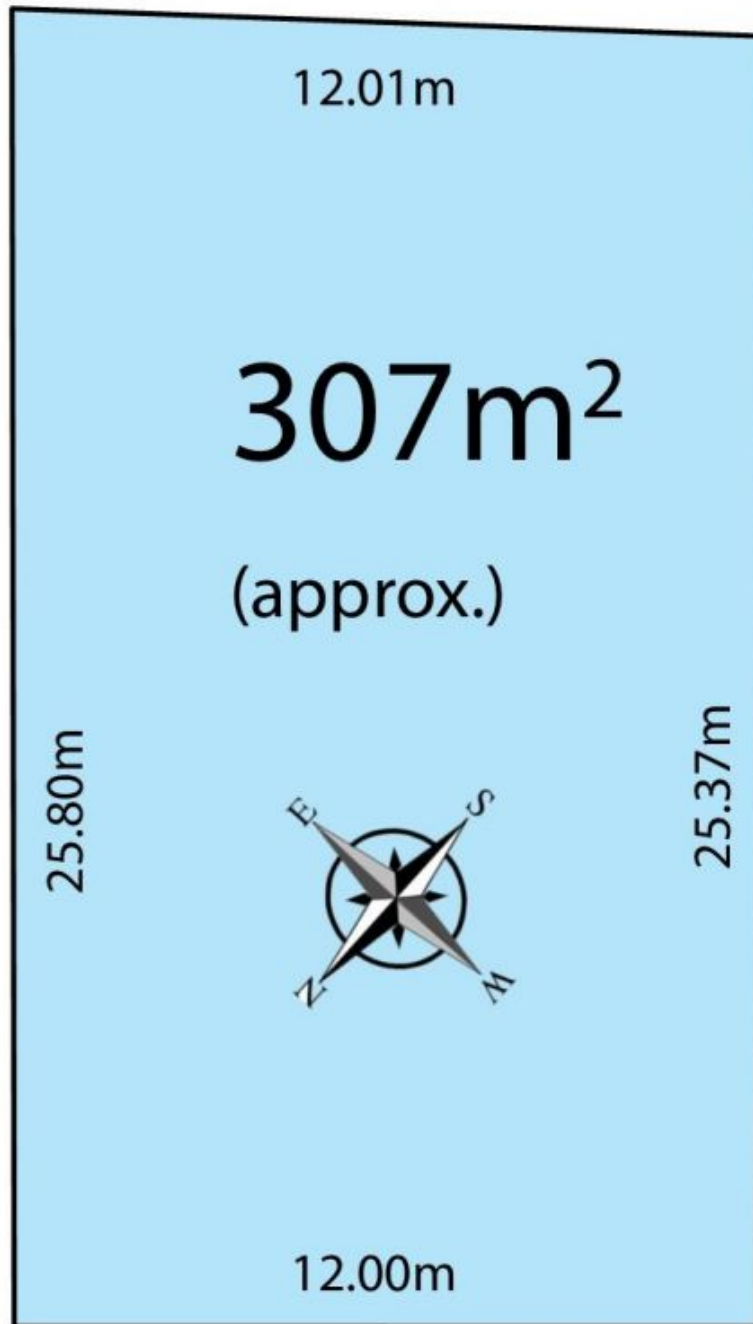


**Bevan Bruse**  
08 8431 8181



AREAS:

Total : 178.70  
sq.m.



**JACKSON TERRACE**