



2/129 Folkestone Road Dover Gardens SA

3 **1** **1**

SPACIOUS ROOM SIZES THROUGHOUT.

BIG BACK YARD AND LAWN AREA.

NORTH FACING LIVING ROOM AND BACK YARD.

Stylish open plan hub of the home living area.

3 bedrooms.

3-way bathroom.

Excellent storage.

Fully equipped kitchen with lots of bench space and a walk-in pantry.

Lock up garage.

Large garden shed.

Only attached at the garage.

Only 2 in the group.

Price : \$480,000 - \$505,000

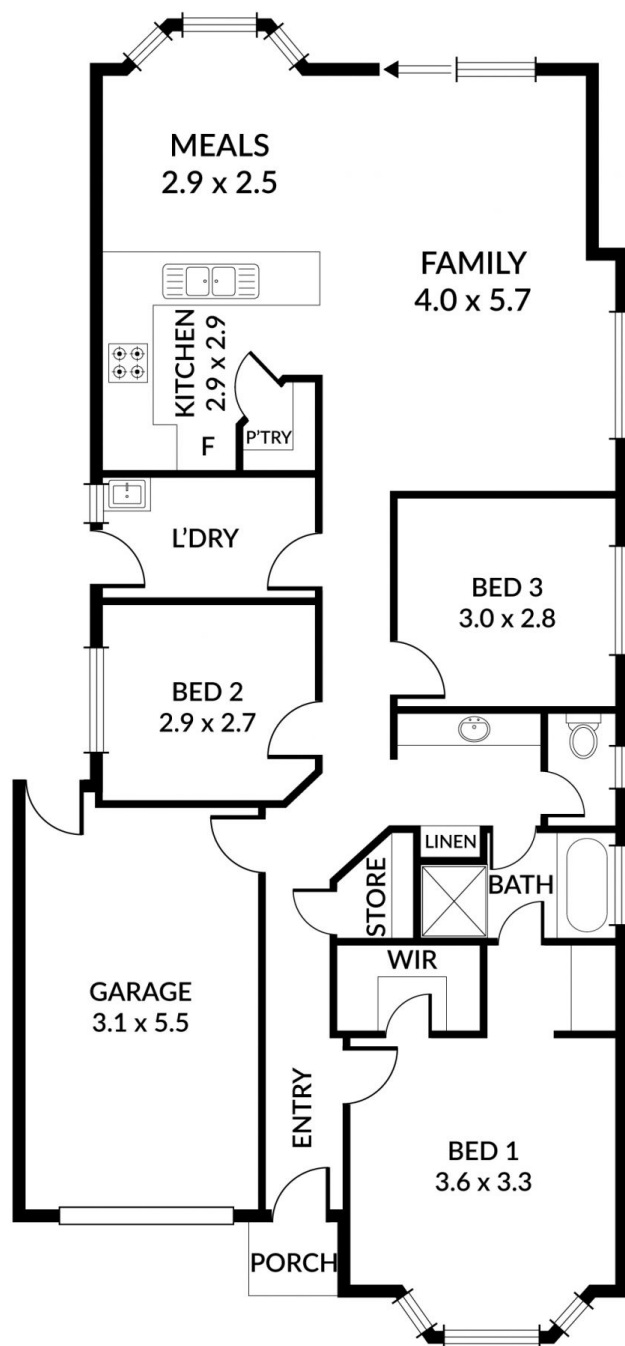
View : <https://www.bruse.com.au/6256260>



Theon Bruse
08 8431 8181



Bevan Bruse
08 8431 8181



LIVING	110.53M ²
PORCH	1.20M ²
GARAGE	18.32M ²
TOTAL	130.05M ²



Scale in metres. Indicative only. Dimensions are approximate. All information contained herein is gathered from sources we believe to be reliable. However we cannot guarantee its accuracy and interested persons should rely on their own enquiries.

