



5/58 Rose Terrace Wayville SA

1 1 2

Amazing Offering in a Prime City Fringe Location.

Perfectly positioned on an attractive tree lined street in a quiet and peaceful group of only 6, this freshly renovated unit offers a fantastic opportunity for 1st home buyers, investors and those looking to downsize.

Extremely rare, this unit boasts a FULLY INSULATED & HARD WIRED DOUBLE GARAGE offering huge opportunities! Investors - lease it the carpark separately to one of the nearby offices or rent it along with the unit for a very viable return. Owner occupiers â€” simply park 2 vehicles or as the current owners have done utilise the garage as 1 carpark plus a studio, workshop or office space.

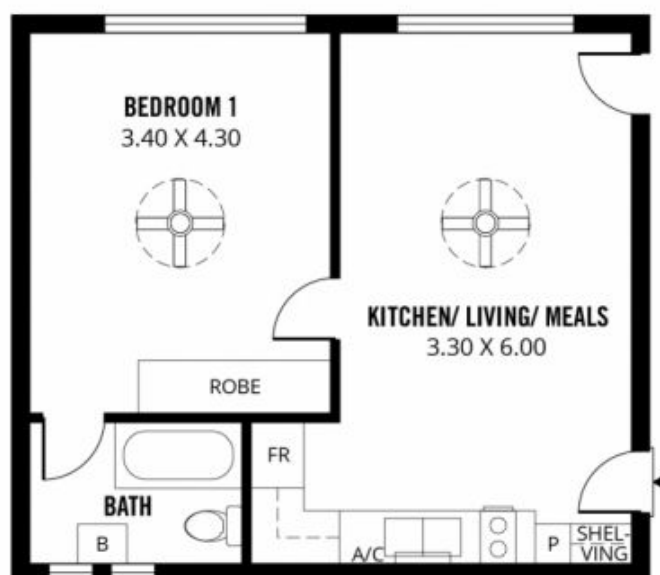
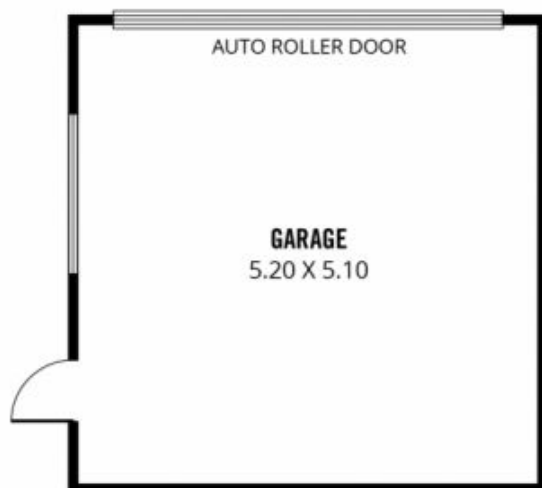
Perfectly located on the southern fringe of the city all the

Price : \$ 310,000

View : <https://www.bruse.com.au/6252385>



Toby Shipway
8413 8181

**75m²****TOTAL****46m²**

Living

29m²

Garage

Scale in metres. This drawing is for illustration purposes only. All measurements are approximate and details intended to be relied upon should be independently verified.

Produced by **The Fotobase Group**