



2/9 Dineen Place West Beach SA

3 2 2

Sophisticated and very spacious!

Uber cool black kitchens with gold taps, check out the internal 3D renders ? they look so good.

Extra high 3m ceilings to the lower level.

Buyers will appreciate the designs and quality builds. Architect Alberto D'Andrea is well known & very experienced with high end Adelaide homes.

Builder 4Front PD will ensure the homes are completed to the highest standard and are known for their attention to detail in the construction field.

Developer WP Property is well known for outstanding developments and combining the best in design and pride in their developments.

All the right people are working on this project.

Price : \$ 801,000

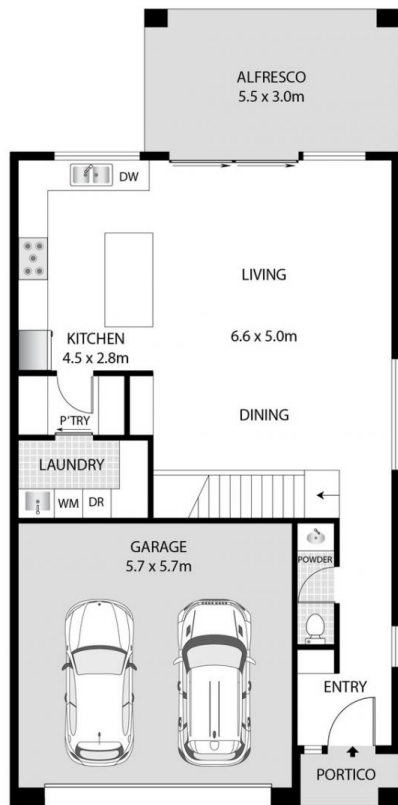
View : <https://www.bruse.com.au/sale/sa/western-beach-side-suburbs/west-beach/residential/house/6044480>



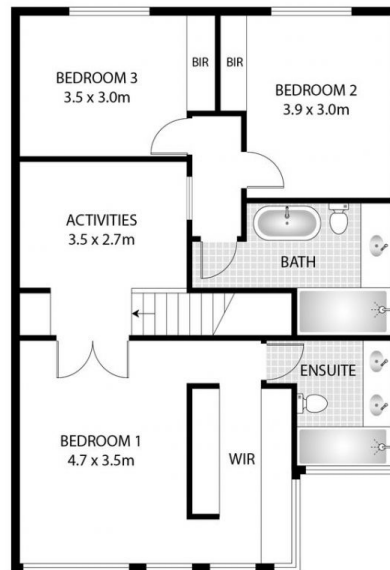
Theon Bruse
08 8431 8181



Toby Shipway
8413 8181



GROUND FLOOR



UPPER FLOOR

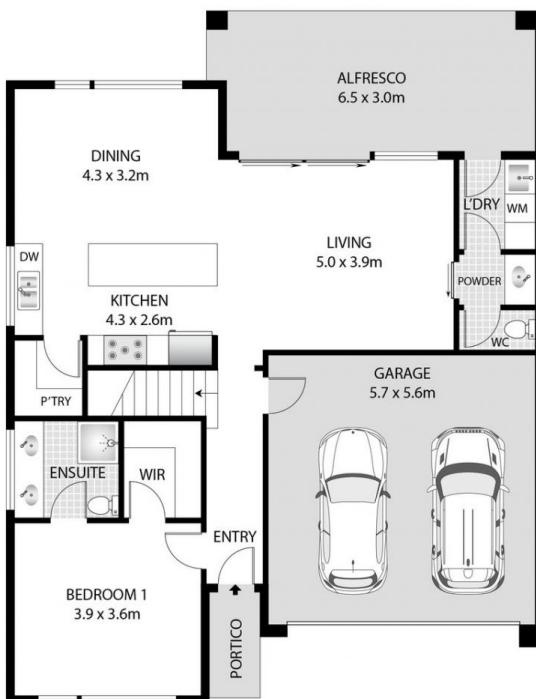
9 Dineen Place, West Beach Dwelling 3

SIZES AND DIMENSIONS ARE APPROXIMATE, ACTUAL MAY VARY.

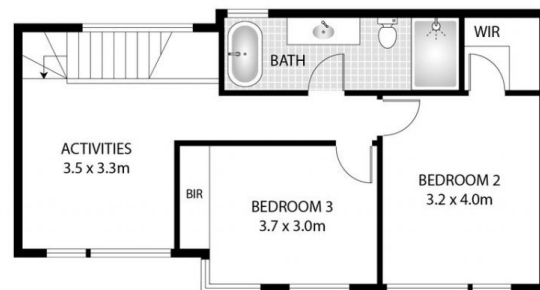
Main Living:	76.0m ²
Garage:	37.3m ²
Upper Floor:	94.0m ²
Alfresco:	16.5m ²
Portico:	2.5m ²
Total:	226.3m²



9 Dineen Place, West Beach Dwelling 4



GROUND FLOOR



UPPER FLOOR

Main Living:	94.5m ²
Garage:	36.5m ²
Upper Floor:	65.3m ²
Alfresco:	16.5m ²
Portico:	2.0m ²
Total:	214.8m²



SIZES AND DIMENSIONS ARE APPROXIMATE, ACTUAL MAY VARY.