



**1, 2 & 3/3 Gorman Street Modbury SA**

3 2 1

You will be extremely impressed by the size and on trend design of these new homes.

**\$30,000 IN GRANTS.**

**NEW HOME BUILDERS GRANT OF \$15,000.**

**FIRST HOME BUYERS GRANT OF \$15,000.**

**SEPARATE TORRENS TITLES.**

Street fronted with separate driveways.

**YOU WILL LOVE THE LOCATION.**

There is so much happening in family friendly Modbury and with the convenience of the O-Bahn express transport line being only a 5 minute walk away ... you can be in the city in a short time.

5 minute walk to Westfield Tea Tree Plaza that is a vibe of activities thanks to the newly upgraded Restaurant

**Price : \$448,000**

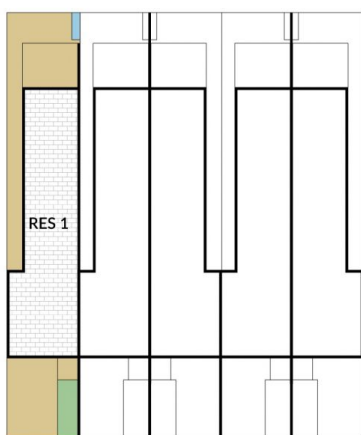
**View : <https://www.bruse.com.au/6043789>**



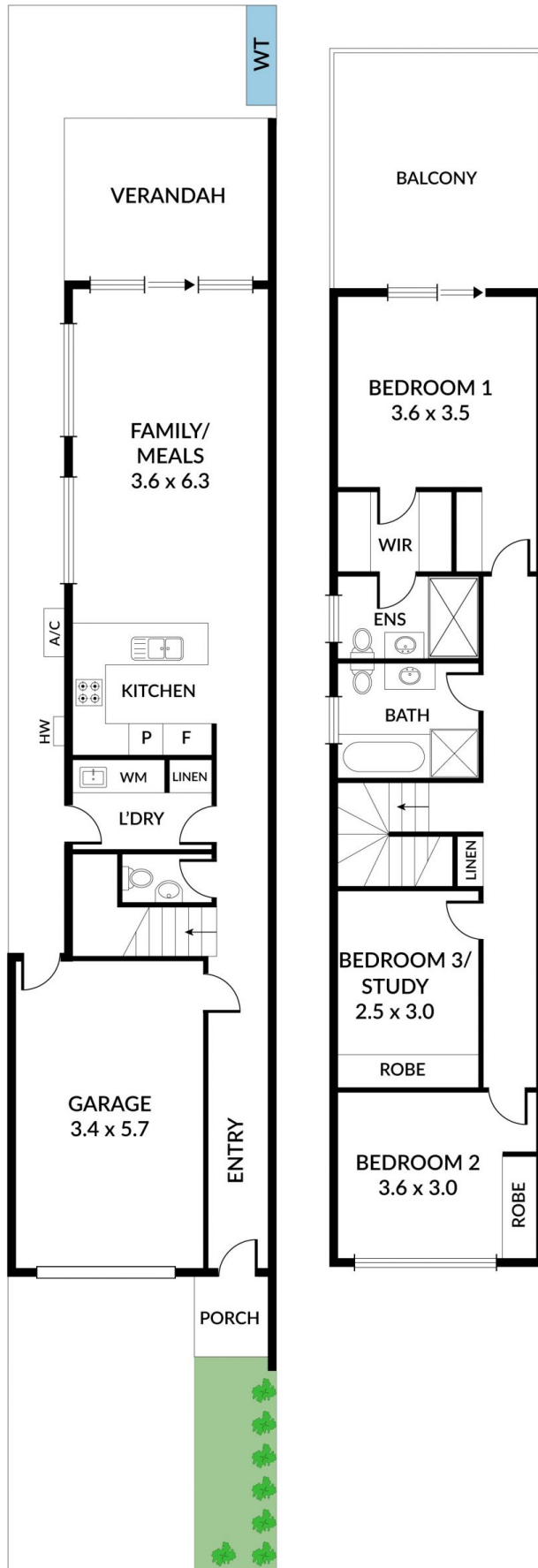
**Theon Bruse**  
**08 8431 8181**



**Toby Shipway**  
**8413 8181**

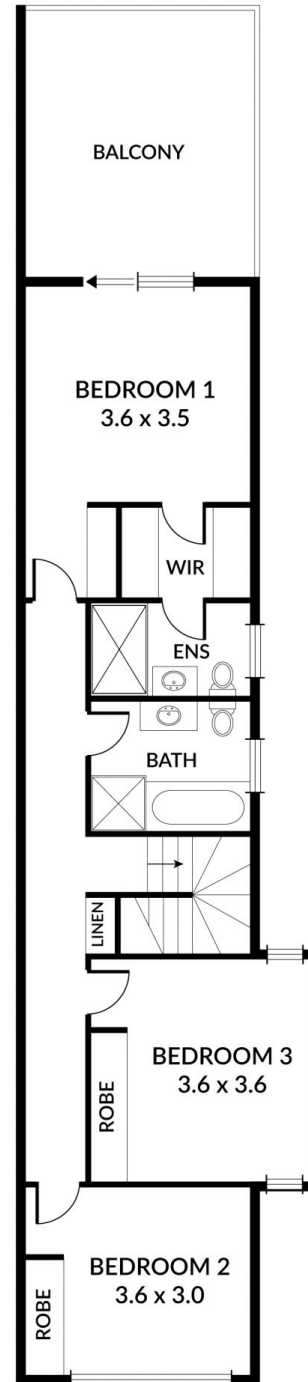
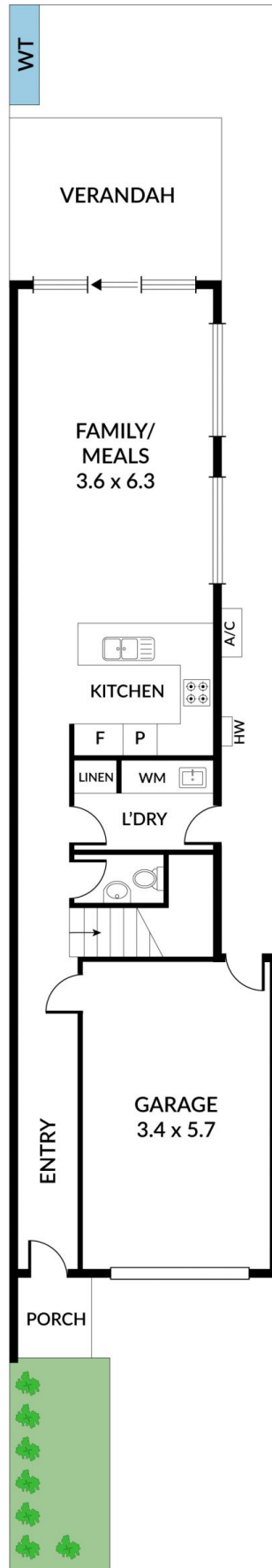


0 1 2 3 4 5

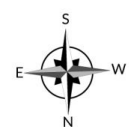


UPPER LIVING	70.35M <sup>2</sup>
LOWER LIVING	56.56M <sup>2</sup>
GARAGE	20.87M <sup>2</sup>
ALFRESCO	11.74M <sup>2</sup>
BALCONY	17.23M <sup>2</sup>
PORCH	2.00M <sup>2</sup>
<b>TOTAL</b>	<b>178.75M<sup>2</sup></b>

Scale in metres. Indicative only. Dimensions are approximate. All information contained herein is gathered from sources we believe to be reliable. However we cannot guarantee its accuracy and interested persons should rely on their own enquiries.



UPPER LIVING	74.30M <sup>2</sup>
LOWER LIVING	57.09M <sup>2</sup>
GARAGE	20.87M <sup>2</sup>
ALFRESCO	11.74M <sup>2</sup>
BALCONY	17.23M <sup>2</sup>
PORCH	1.88M <sup>2</sup>
<b>TOTAL</b>	<b>183.11M<sup>2</sup></b>



0 1 2 3 4 5

Scale in metres. Indicative only. Dimensions are approximate. All information contained herein is gathered from sources we believe to be reliable. However we cannot guarantee its accuracy and interested persons should rely on their own enquiries