



13B, C & D Richardson Avenue Tranmere SA

3 **2** **1**

BUYERS WHO WANT A GREAT LOCATION TO LIVE AN AWESOME LIFESTYLE WILL LOVE THESE NEW HOMES.

Price : \$ 682,000

View : <https://www.bruse.com.au/6000958>

LOCATION TO LOVE! DIRECTLY OPPOSITE A LOVELY PARK.

The view from these homes is inspiring.

Big Balcony.

Only a 2 minute walk to Firle Shopping Centre.

The Tribeca brick facades give the homes a look that will be on trend for many years to come.

EXCELLENT SCHOOL ZONES

Magill Primary School Zone

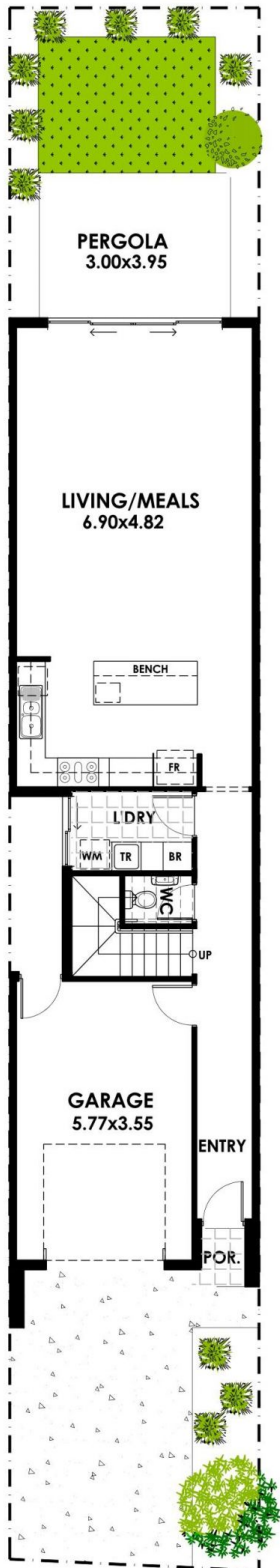
Norwood Morialta High School Zone



Theon Bruse
08 8431 8181

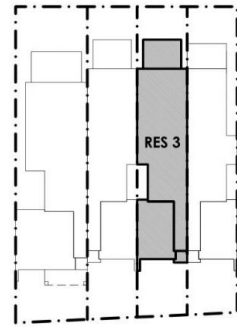


Toby Shipway
8413 8181

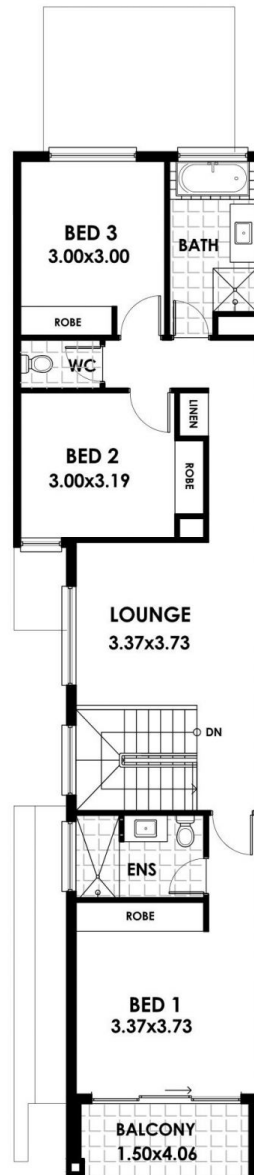


GROUND FLOOR / SITE PLAN

13C	
AREAS	m ²
LOWER LIVING	73.40
UPPER LIVING	88.70
GARAGE	23.00
PERGOLA	11.80
PORCH	2.00
BALCONY	6.00
TOTAL	204.90
SITE AREA	164.5m²



RICHARDSON AVE.



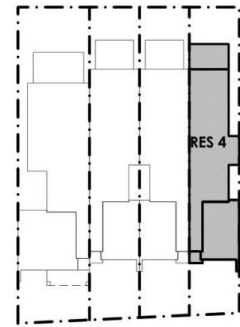
FIRST FLOOR PLAN



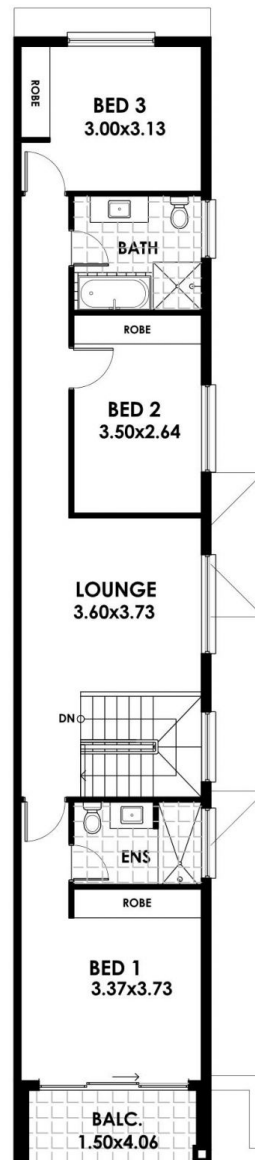


GROUND FLOOR / SITE PLAN

13D	
AREAS	m ²
LOWER LIVING	66.00
UPPER LIVING	88.30
GARAGE	23.00
ALFRESCO	10.50
PORCH	2.00
BALCONY	6.00
TOTAL	195.80
SITE AREA	163.5m ²



RICHARDSON AVE.



FIRST FLOOR PLAN

