



6/ West Street Hectorville SA

THIS IS AN EXTREMELY RARE FIND, TO FIND AN ALLOTMENT OF LAND THIS GENEROUS IN SIZE. IT IS CERTAINLY SOMETHING VERY UNIQUE. DO NOT MISS THIS OPPORTUNITY TO LOOK AT THIS BRILLIANT OPPORTUNITY.

The home itself comprises of generous amounts of living space, bedroom space, good bathroom, excellent kitchen and certainly it does have accommodation that could suit many buyers for a number of years for rental or to live in.

Double garage plus large carport and a very large alfresco outdoor living area and a large tool shed workshop.

Sites like this do not come on the market and there is not many of them left. Do not hold back. Inspect it at your earliest convenience as this is certainly a unique offering.

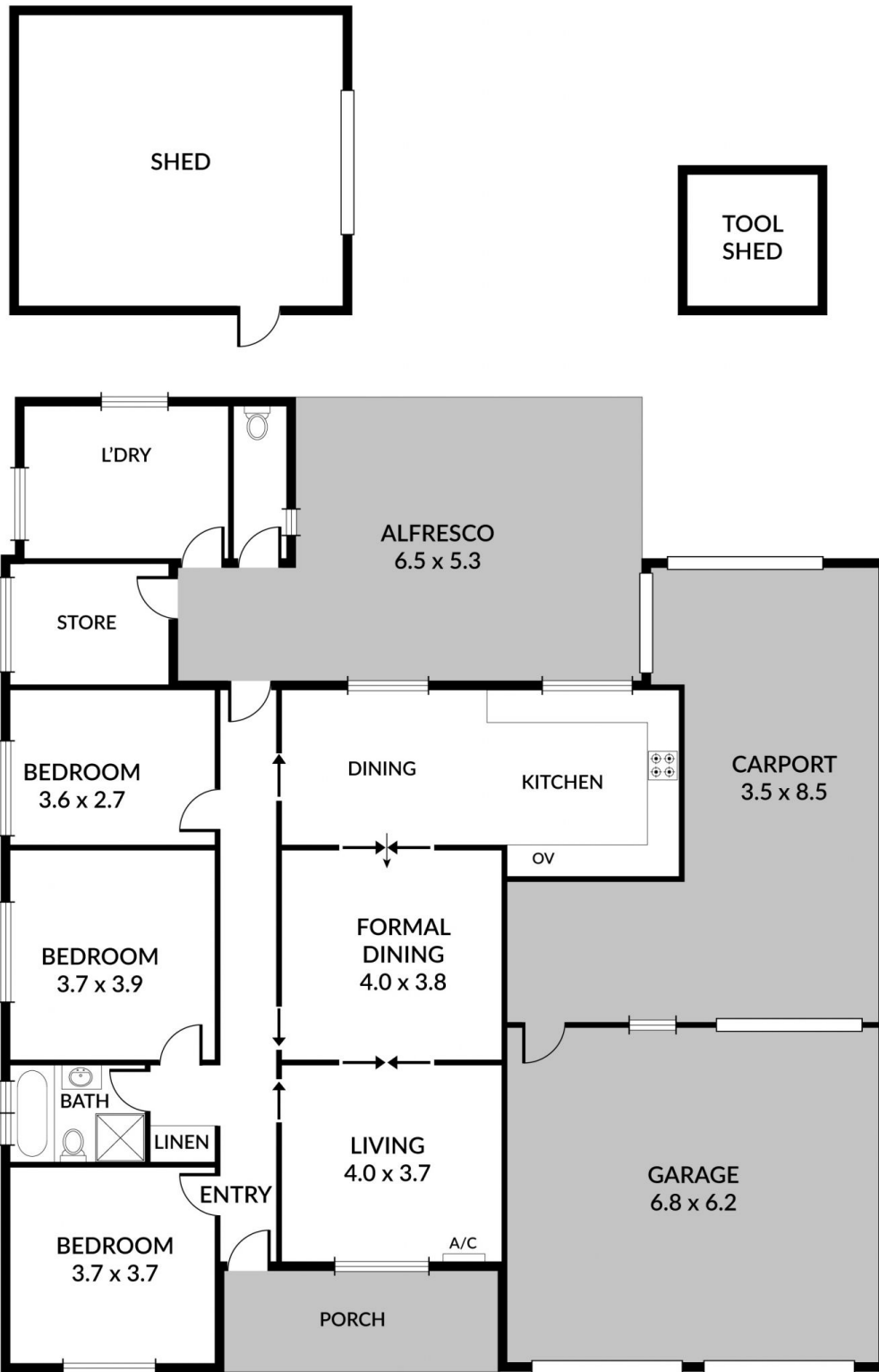
Price : \$ 867,000
Land Size : 1470 sqm
View : <https://www.bruse.com.au/sale/sa/eastern-suburbs/hectorville/residential/land/5986678>



Bevan Bruse
08 8431 8181



Theon Bruse
08 8431 8181



LIVING	139M ²
GARAGE	42M ²
CARPORT	40M ²
SHED	38M ²
PORCH	9M ²
ALFRESCO	38M ²
TOTAL	306M²



Scale in metres. Indicative only. Dimensions are approximate. All information contained herein is gathered from sources we believe to be reliable. However we cannot guarantee its accuracy and interested persons should rely on their own enquiries.