



10A to F Alexander Avenue Ashford SA

3 **2** **1**

The moment you walk into this home you will appreciate the quality and the attention to detail in this MannaCorp new home.

Price : \$ 629,000

View : <https://www.bruse.com.au/5979595>

THE LATEST IN CONTEMPORARY COLOURS AND DESIGN, BLACK FEATURES THROUGHOUT, AWESOME MIX OF MODERN SPACES COMPLEMENTED BY WARMING WOODEN FEATURES. LUXURY LIVING AT ITS BEST.

If you are looking for a new home offering plenty of space and with an easy care lifestyle then we are confident that you will love this new home.

2 GENEROUS LIVING AREAS MAXIMIZING NATURAL LIGHT.



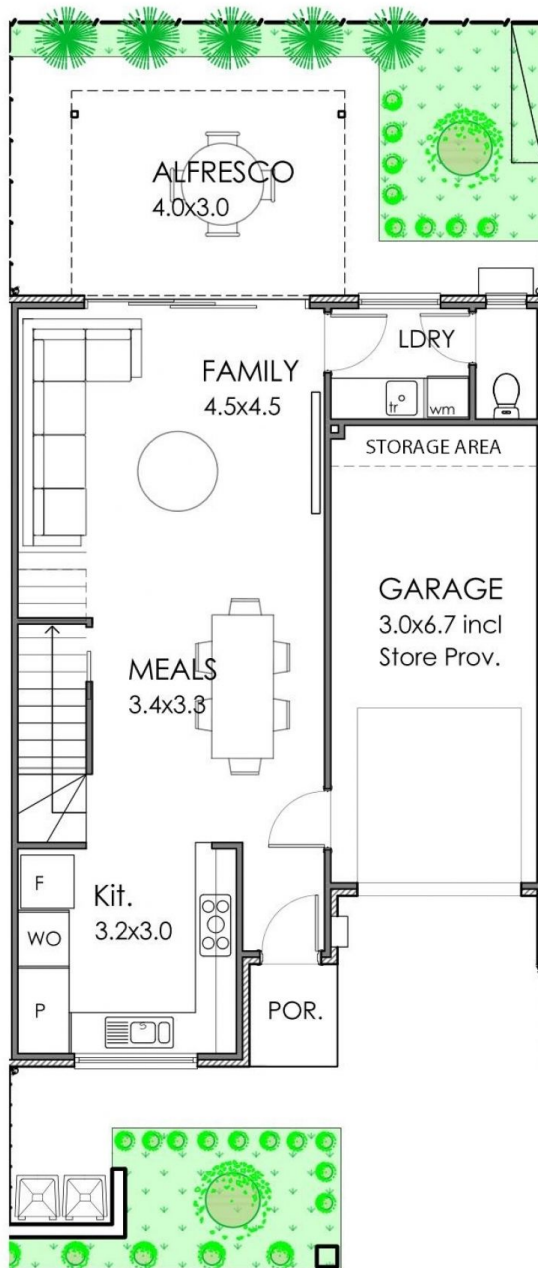
Theon Bruse
08 8431 8181



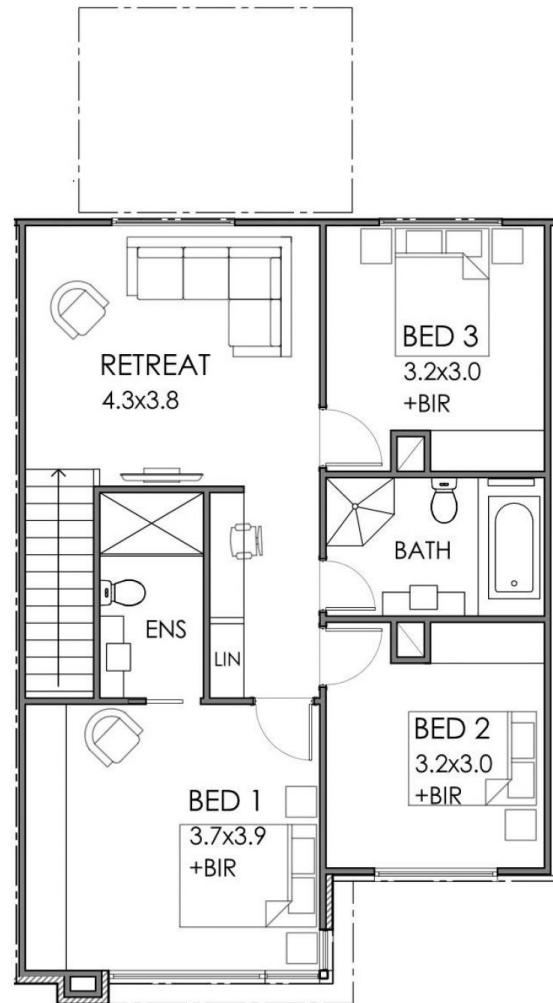
Toby Shipway
8413 8181



MANNACORP
CREATIVE PROPERTY SOLUTIONS



LOWER FLOOR PLAN



UPPER FLOOR PLAN



Residence 4

SCALE 1 : 100

0 5m

GROUND MAIN LIVING	UPPER MAIN LIVING	GARAGE	PORTICO	ALFRESCO	TOTAL
57.8 SQM	83.3 SQM	21.3 SQM	1.9 SQM	12 SQM	176.3 SQM