



**311/180 Morphett Street Adelaide SA**

2 1

Situated in the exclusive Vision Apartments, this spacious apartment offers a fantastic opportunity for investors, executive couples and anyone looking enjoy a secure, lock up and leave lifestyle.

**Price** : \$365,000 - \$385,000  
**Building Size** : 77 sqm  
**View** : <https://www.bruse.com.au/5978152>

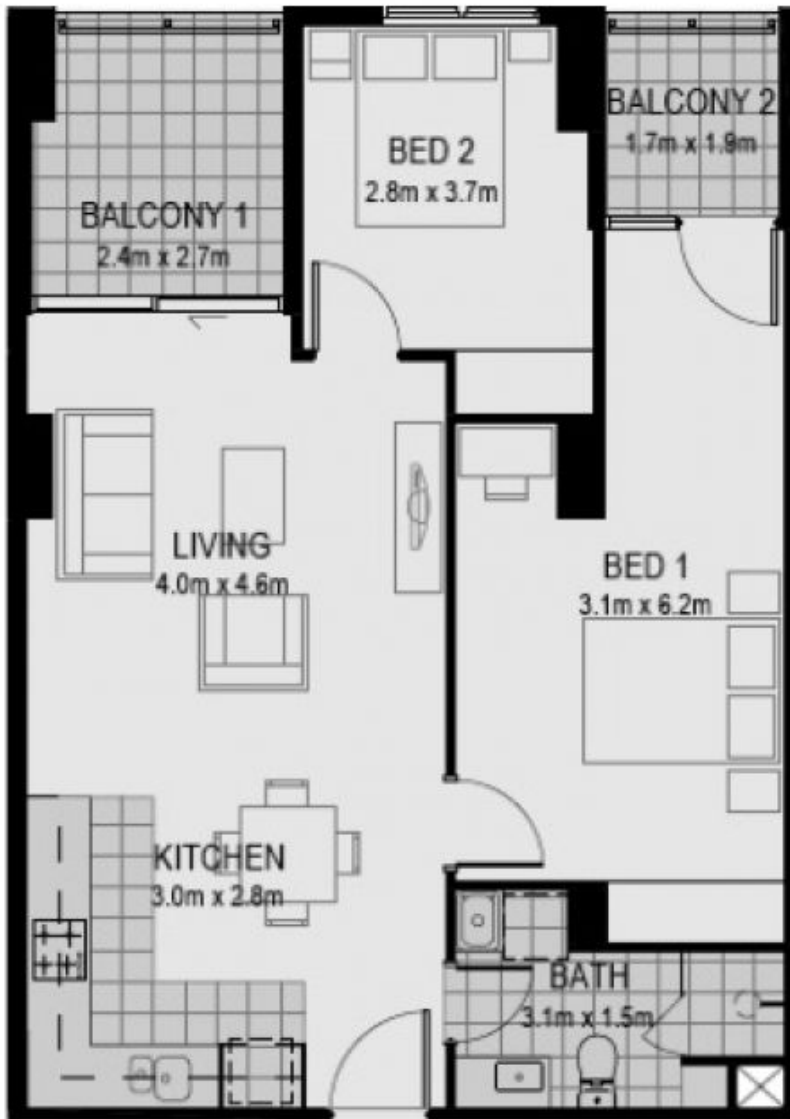
Take advantage of the huge investment options available in such a great CBD location. Manage it yourself on a short term basis through companies such as Airbnb and Stayz or sit back and let one the reputable companies take care of it for you.



**Toby Shipway**  
8413 8181

Now tenanted until February 2022 for \$400 per week.

Everything city living has on offer is right at your doorstep! Less than 100 metres to the leafy Light Square, a short walk to quality restaurants, cafes and shopping at nearby Gouger Street and the Central Markets, and a 10 minute

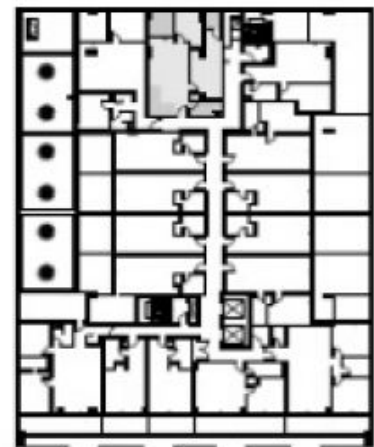


Apartment area: 67.4m<sup>2</sup>

Balcony area: 9.4m<sup>2</sup>

Total area: 76.8m<sup>2</sup>

<N



Morphett Street