



6D Fisher Street Felixstow SA

4 3 2

So close to the city.
Walk to lovely Linear Park and Felixstow Reserve.
East Marden Primary School Zone. (High rating school)
Surrounded by lovely homes.

Price : FROM \$655,000
View : <https://www.bruse.com.au/5944668>

SEPARATE TORRENS TITLE HOMES.
STYLISH DESIGNS FEATURING RECLAIMED BRICK &
MODERN LINES.
BEDROOM AND BATHROOM ON THE GROUND LEVEL.

Spacious free flowing main living & dining room.

Stylish fully equipped kitchens with top quality Smeg
appliances, solid stone bench tops and lots of storage.

4 BEDROOMS AND 3 BATHROOMS.



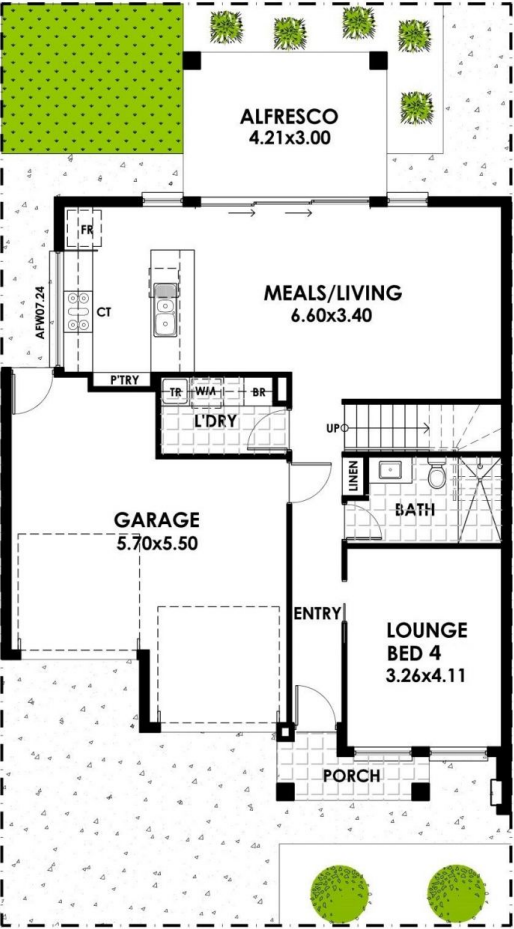
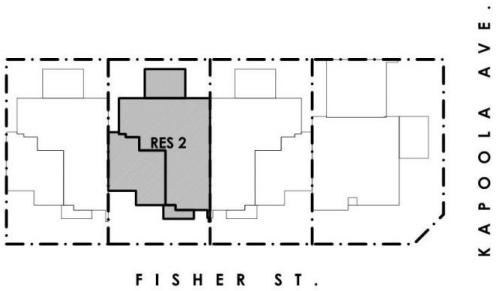
Bevan Bruse
08 8431 8181



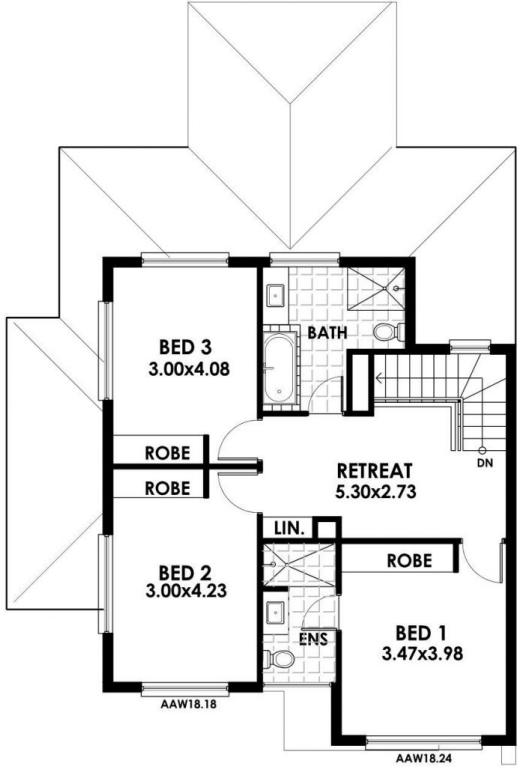
Theon Bruse
08 8431 8181

3/6D FISHER STREET

AREAS	m ²
LOWER LIVING	76.00
UPPER LIVING	76.70
GARAGE	35.50
ALFRESCO	12.60
PORCH	3.30
TOTAL	204.10
SITE AREA	200.4m ²



GROUND FLOOR PLAN
SCALE 1:100 @ A3

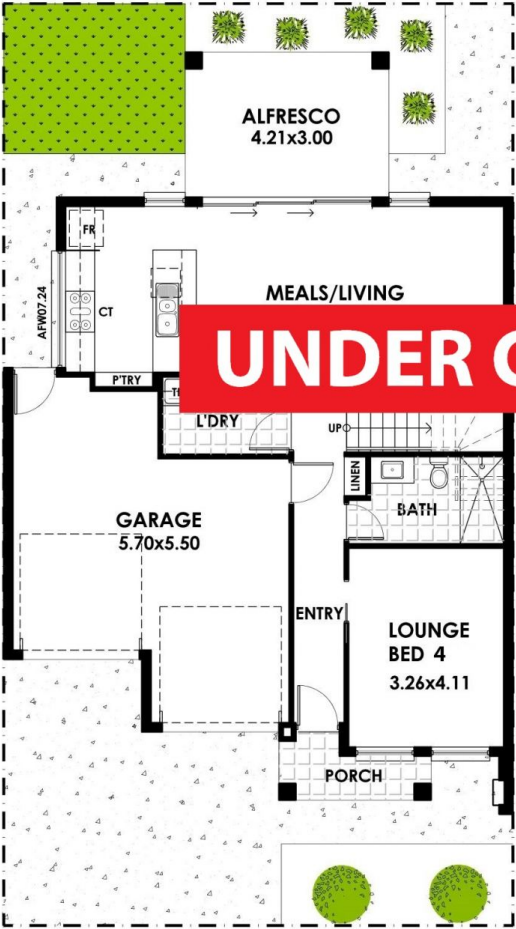
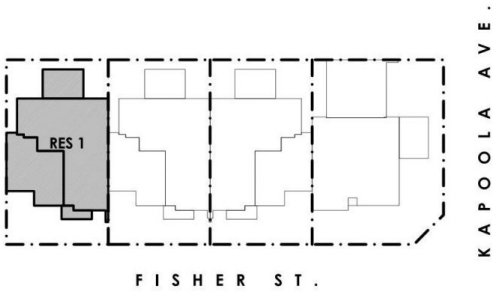


FIRST FLOOR PLAN
SCALE 1:100 @ A3

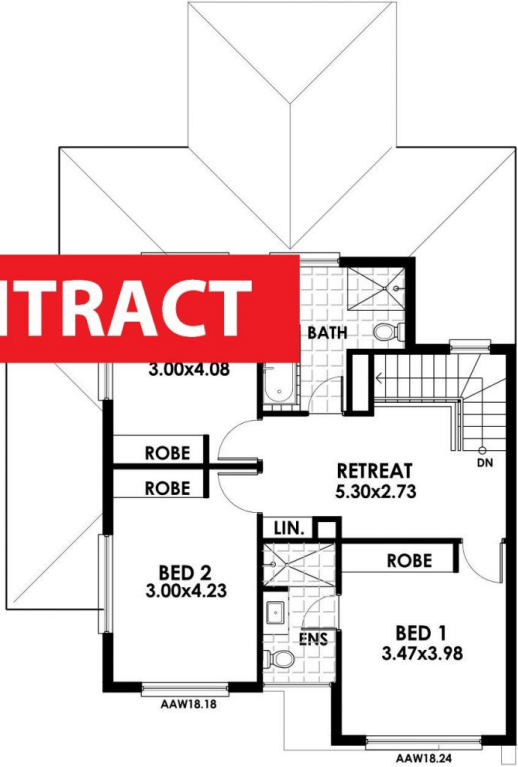


4/6D FISHER STREET

AREAS	m ²
LOWER LIVING	76.00
UPPER LIVING	76.70
GARAGE	35.50
ALFRESCO	12.60
PORCH	3.30
TOTAL	204.10
SITE AREA	200.4m²



GROUND FLOOR PLAN
SCALE 1:100 @ A3



FIRST FLOOR PLAN
SCALE 1:100 @ A3

