



28 Wyatt Road Burnside SA

4 2 2

THIS HOME HAS BEEN IN THE ONE FAMILY FOR MANY YEARS AND HAS BEEN LOVED AND CARED FOR. IN A BEAUTIFUL GARDEN SETTING. A HOME WITH 4 BEDROOMS, 2 LIVING AREAS, 2 BATHROOMS AND A LARGE LOCKUP GARAGE TO THE REAR IN THIS AMAZING GARDEN SETTING.

Price : \$ 883,000
Land Size : 836 sqm
View : <https://www.bruse.com.au/sale/sa/eastern-suburbs/burnside/residential/house/5913510>

WHAT A PURCHASE THIS IS, DO NOT MISS OUT.

The home upon entry leads to a very good size living room, this generous room is adjacent to the separate dining room and that separate dining room is adjacent to a well-appointed upgraded kitchen facility with a generous amount of cupboard and bench space.

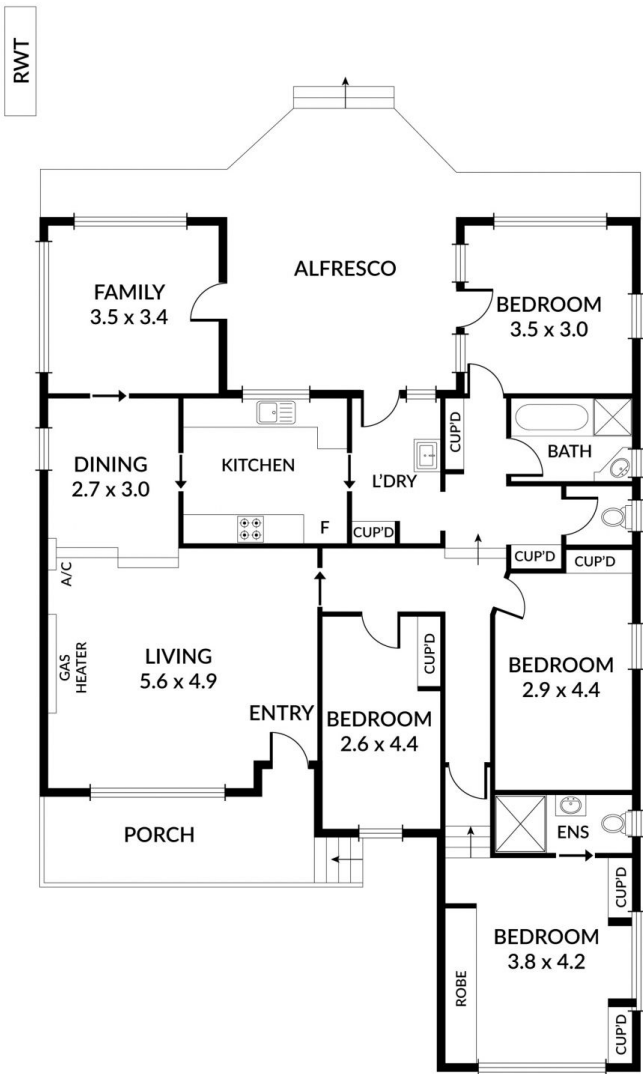
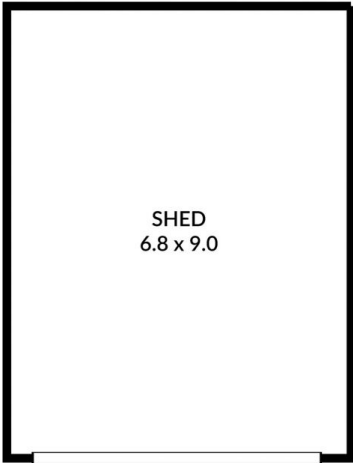
Also adjacent to the dining area is the everyday living room. This room is really a great room with direct access



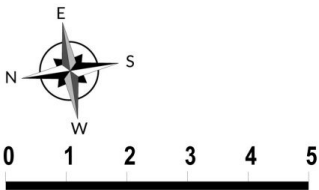
Bevan Bruse
08 8431 8181



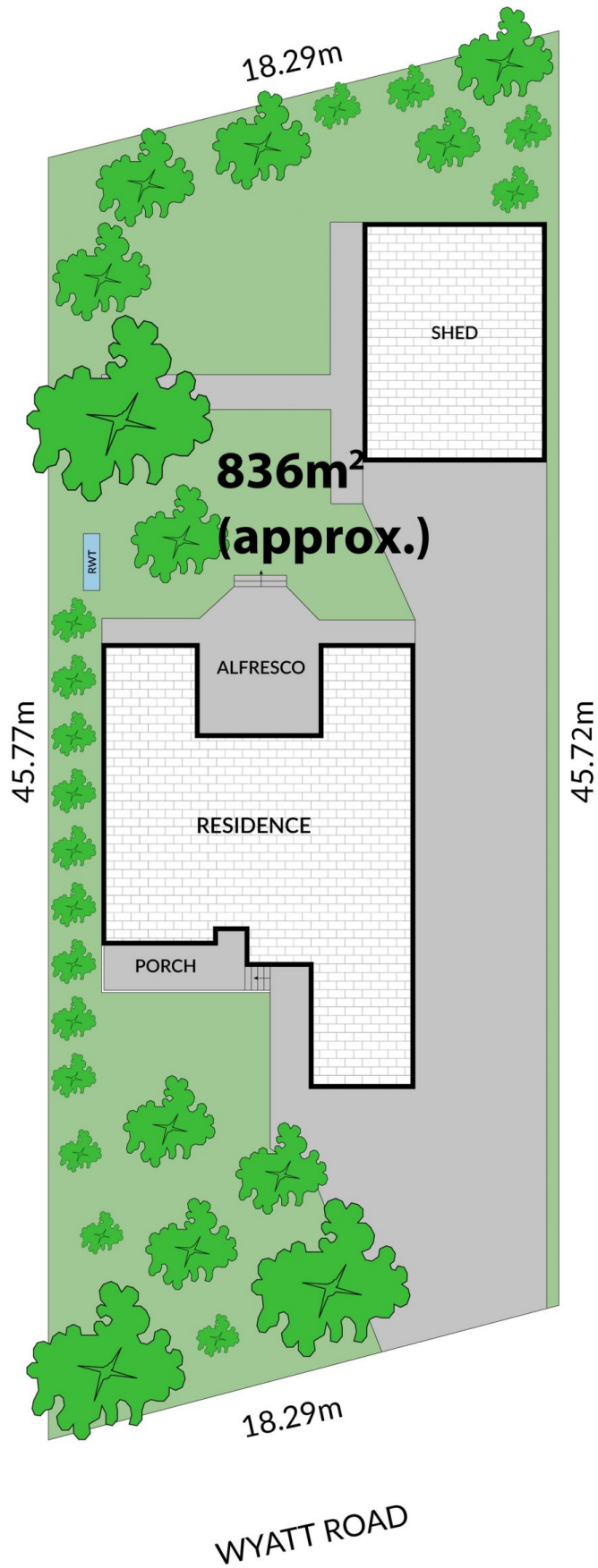
Theon Bruse
08 8431 8181



LIVING	146M ²
PORCH	11M ²
ALFRESCO	33M ²
SHED	61M ²
TOTAL	251M²



Scale in metres. Indicative only. Dimensions are approximate. All information contained herein is gathered from sources we believe to be reliable. However we cannot guarantee its accuracy and interested persons should rely on their own enquiries



Scale in metres. Indicative only. Dimensions are approximate. All information contained herein is gathered from sources we believe to be reliable. However we cannot guarantee its accuracy and interested persons should rely on their own enquiries