

## 12 Whitelodge Road Paradise SA

3 2 2

JUST COMPLETED ONLY LANDSCAPING TO BE DONE.

ONLY HOUSE ONE LEFT - the front home  
House 2, 3 and 4 are now sold

House-Proud Property Developments & Lofty Building Group have once again created exciting family homes that offer so much you will love.

### HOUSE 1 (FRONT HOME) \$498,000

- Front home to maximise a lovely outlook over the quiet street.
- Extra wide 5.5m outdoor undercover alfresco area.
- Lots of windows to the open plan living area to maximise natural light.
- Black & White "Ying Yang" professionally designed interior scheme.

**Price** : \$498,000

**View** : <https://www.bruse.com.au/5810899>



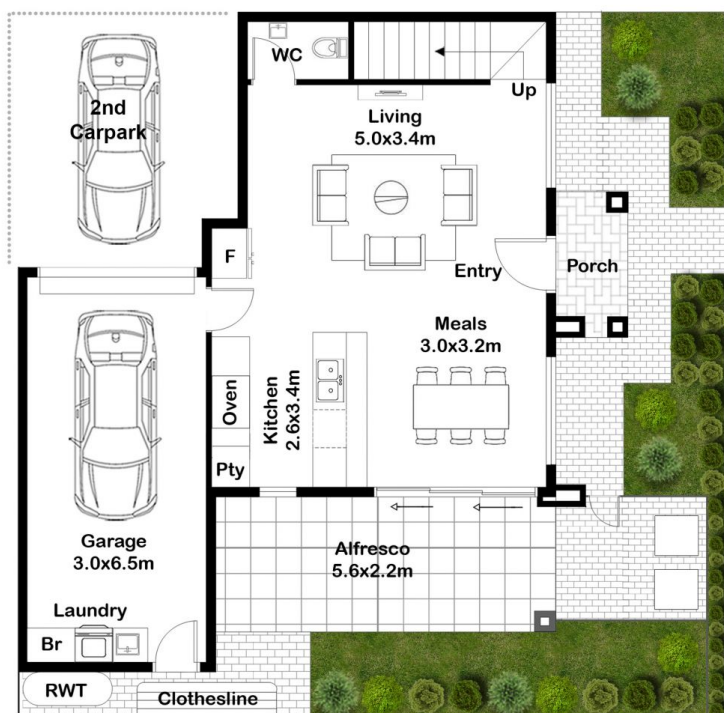
**Theon Bruse**  
08 8431 8181



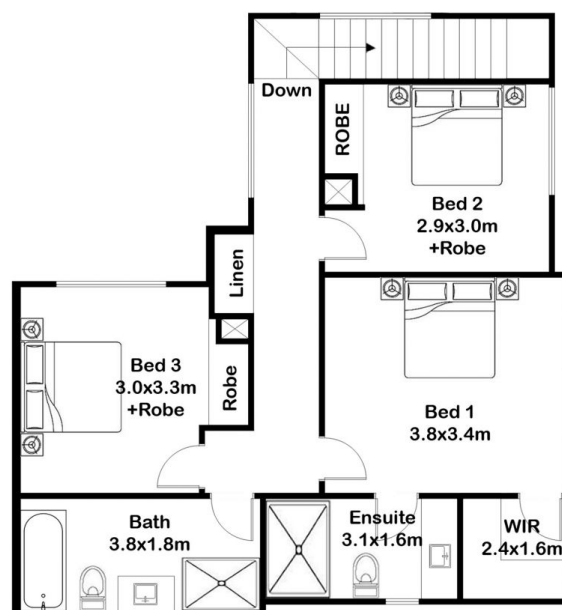
**Toby Shipway**  
8413 8181

# Home 1 of Paradise Living

Proudly envisioned by...



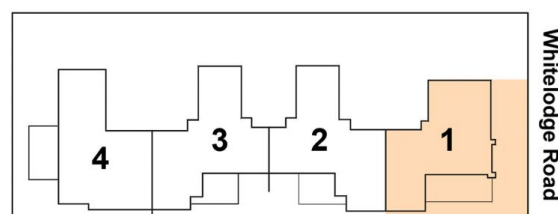
GROUND LEVEL PLAN



UPPER LEVEL PLAN

Areas	m <sup>2</sup>
Lower Living	46.68
Upper Living	71.42
Garage	22.49
Porch	2.86
Alfresco	13.07
<b>Total Building Area</b>	<b>156.52</b>
Front Yard	22.0
Rear Yard	36.8

## Where This Home Sits



Floorplan for illustrative purposes only