



45 Boucaut Avenue Klemzig SA

3 1 2

Excellent Development opportunity or Renovators Delight!

Perfectly positioned in this highly sort after North-Eastern Suburb, this wonderful property offers an exciting opportunity for developers, investors and keen renovators looking to transform this solid brick house into a spacious family home.

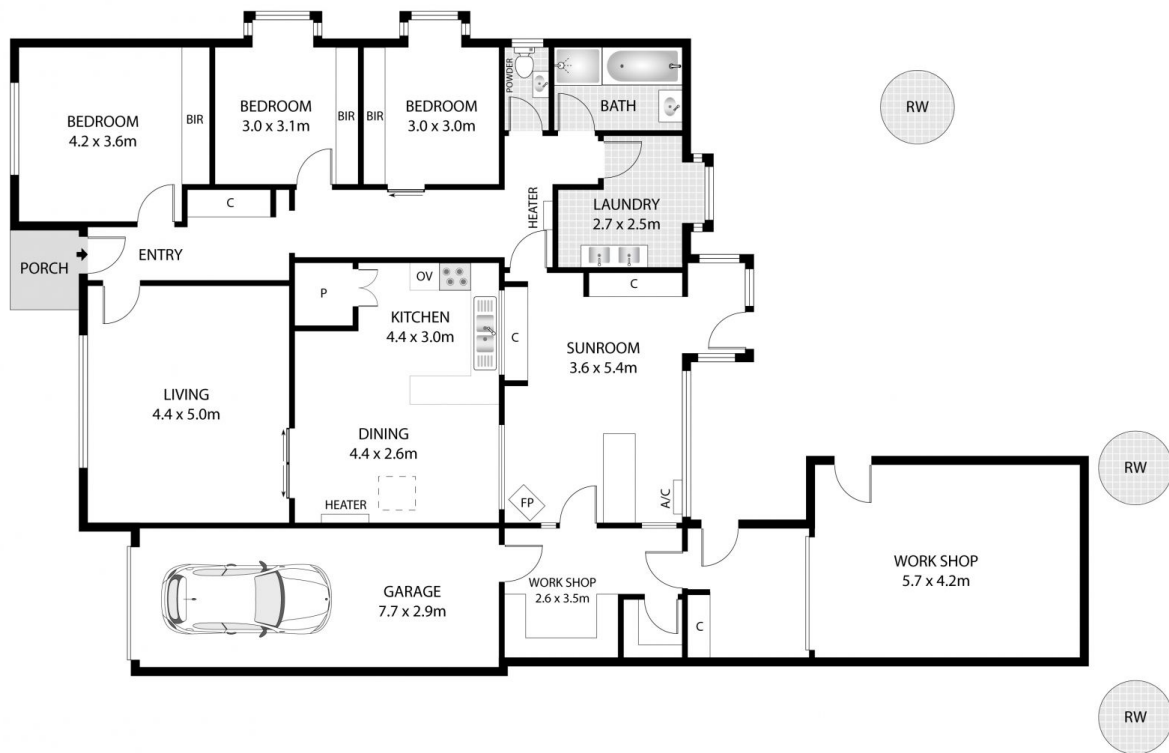
The good size allotment of 697 m2 (approx.) of level land (15.24 m frontage x 45.72 m depth) zoned Residential/64 - Residential East in the City of Port Adelaide Enfield Council boasts huge subdivision potential for 2 new homes (STCC).

Surrounded by all amenities with a choice great shopping at Marden and Greenacres Shopping Precincts, only a few hundred metres to Linear Park and Lochiel Park and a short stroll to Klemzig O-Bahn Interchange.

Price : \$ 520,000
Building Size : 213 sqm
Land Size : 697 sqm
View : <https://www.bruse.com.au/sale/sa/north-north-east-suburbs/klemzig/residential/house/5552014>



Toby Shipway
8413 8181



Indoor: 213m²
 Outdoor: 3m²
 Total: 216m²