



**8 Selbourne Avenue Rostrevor SA**

3 2 3

1063m2 APPROX OF LAND. LARGE SITES LIKE THIS ONE ARE RARE.

TAKE ADVANTAGE OF THIS AWESOME OPPORTUNITY!

Currently with a tidy home comprising a large living room. Functional Kitchen. Self-contained flat with bedroom, living, bathroom. Lots of sheds. Lots of fruit trees. Ripe renovation!

The location is fantastic on the Magill side of Rostrevor. Selbourne Avenue has always been one of the prettiest tree lined streets.

18.85m x 56.28m (approx.)

**Price** : \$ 720,000  
**Land Size** : 1063 sqm  
**View** : <https://www.bruse.com.au/sale/sa/eastern-suburbs/rostrrevor/residential/house/5552004>

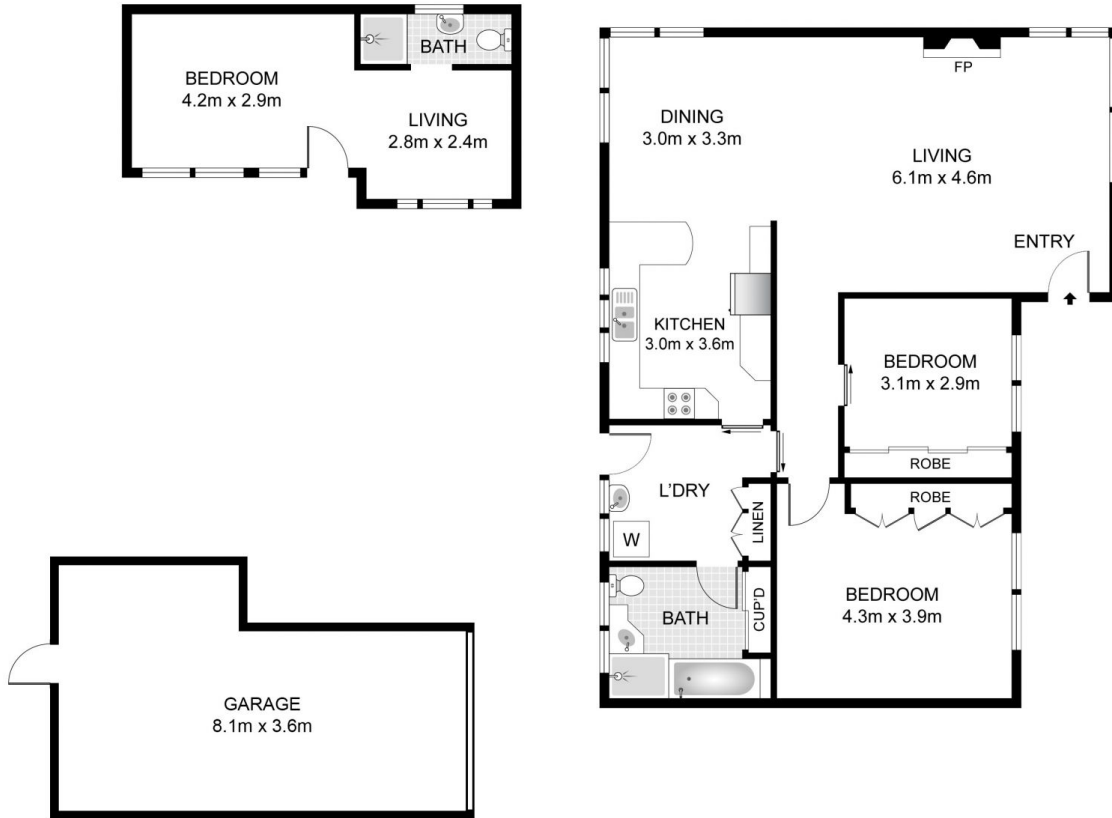


**Theon Bruse**  
08 8431 8181



**Bevan Bruse**  
08 8431 8181

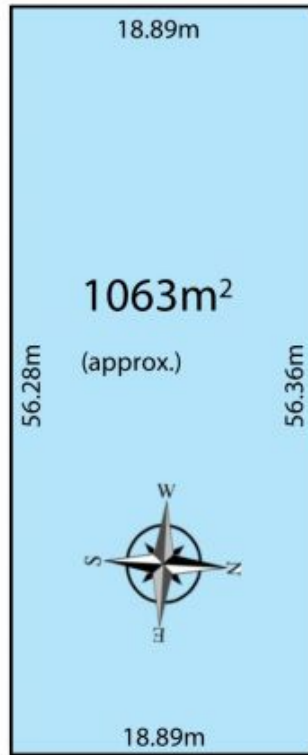
8 Selbourne Avenue, Rostrevor



Gross Internal Area  
Internal = 98.71m<sup>2</sup>, Unit 31.98m<sup>2</sup>  
Total = 129.79m<sup>2</sup>



SIZES AND DIMENSIONS ARE APPROXIMATE, ACTUAL MAY VARY.



**SELBOURNE AVENUE**