



House 4/2 Wilton Street Campbelltown SA

3 2 2

GET READY TO BE IMPRESSED IF YOU LIKE THE FINER THINGS IN LIFE. THE BUILDER WENT ABOVE & BEYOND ON THIS NEW HOME. BOSCH APPLIANCES. SOLID STONE BENCH TOPS. LUXURIOUS FLOOR TILES. IT'S A GOOD ONE!

EAST MARDEN SCHOOL ZONE. WALK TO LINEAR PARK. THE LOCATION IS FANTASTIC.

ALL ROOMS ARE EXTRA LARGE.

2 separate living rooms.

Large under main roof alfresco living area.

Awesome main bedroom suite with a huge walk in robe and deluxe ensuite bathroom.

2 other big bedrooms with built in robes.

Huge second bathroom with bath tub.

Price : \$ 535,000

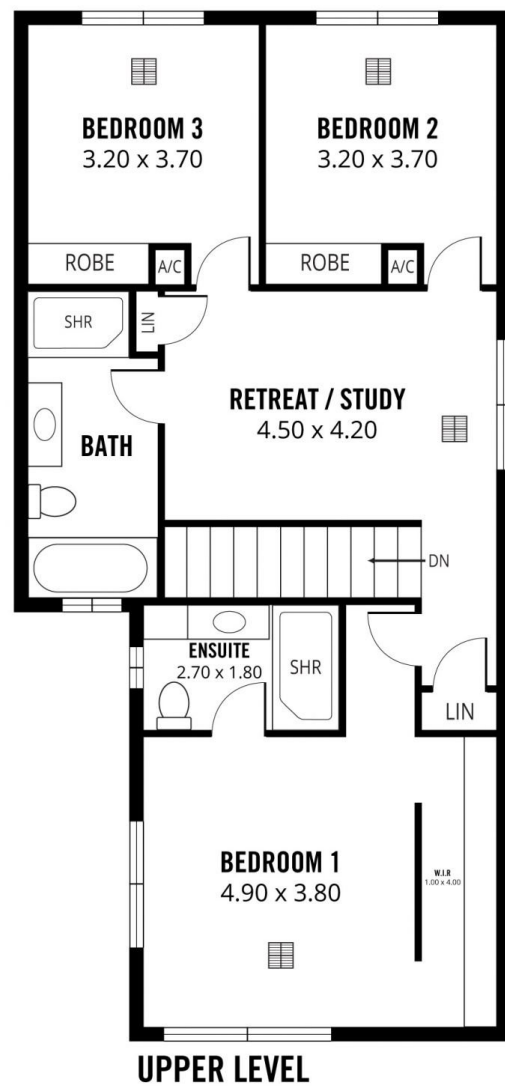
View : <https://www.bruse.com.au/sale/sa/north-north-east-suburbs/campbelltown/residential/house/5551972>



Theon Bruse
08 8431 8181



Bevan Bruse
08 8431 8181



203m²

TOTAL

152m²

Living

37m²

Garage

12m²

Alfresco

2m²

Porch



Scale in metres. This drawing is for illustration only. All measurements are approximate and details intended to be relied upon should be independently verified.