



44 Blight Street RIDLEYTON SA

3 2 2

This beautifully presented Tudor style home boasting loads of character has been renovated throughout leaving you with nothing to do but move straight in and enjoy a wonderful lifestyle. Set on generous 460m2 of land in an excellent location with the future potential to build two homes (STCC) this is a fantastic opportunity not to be missed.

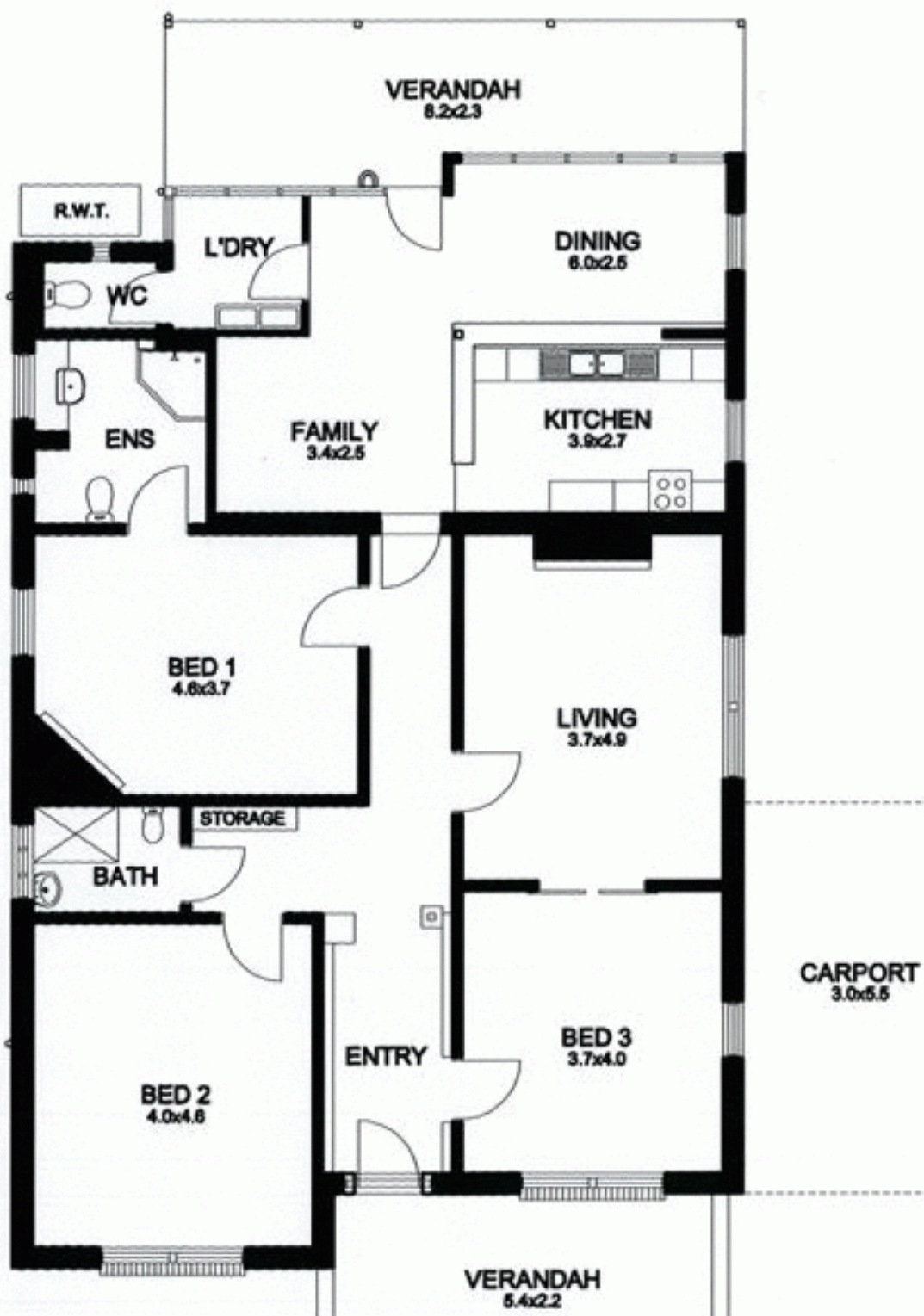
View : <https://www.bruse.com.au/sale/sa/western-beach-side-suburbs/ridleyton/residential/house/5550799>

Situated less than 10 minutes to the CBD, 5 minutes to North Adelaide and only 50 metres from the ever developing Hawker Street and Brompton, you can't get a better location.



Toby Shipway
8413 8181

As you enter the home you are welcomed with a wide entrance hallway complimented with a character archway, polished solid timber floors and 10 foot high ornate ceilings.



DRIVEWAY