



1A Rita Avenue ROSTREVOR SA

4 2 2

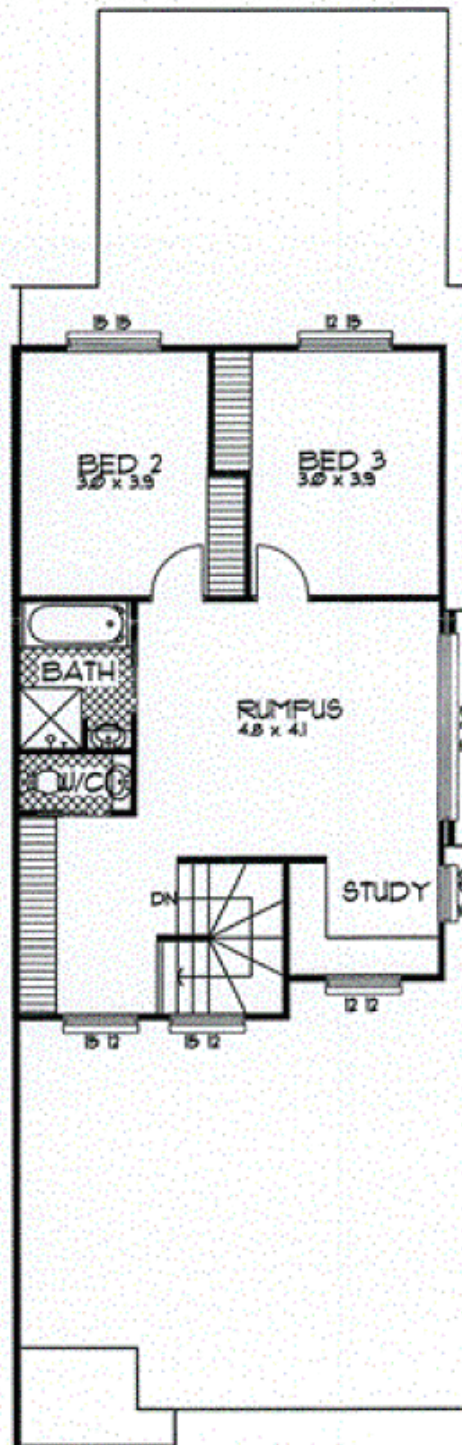
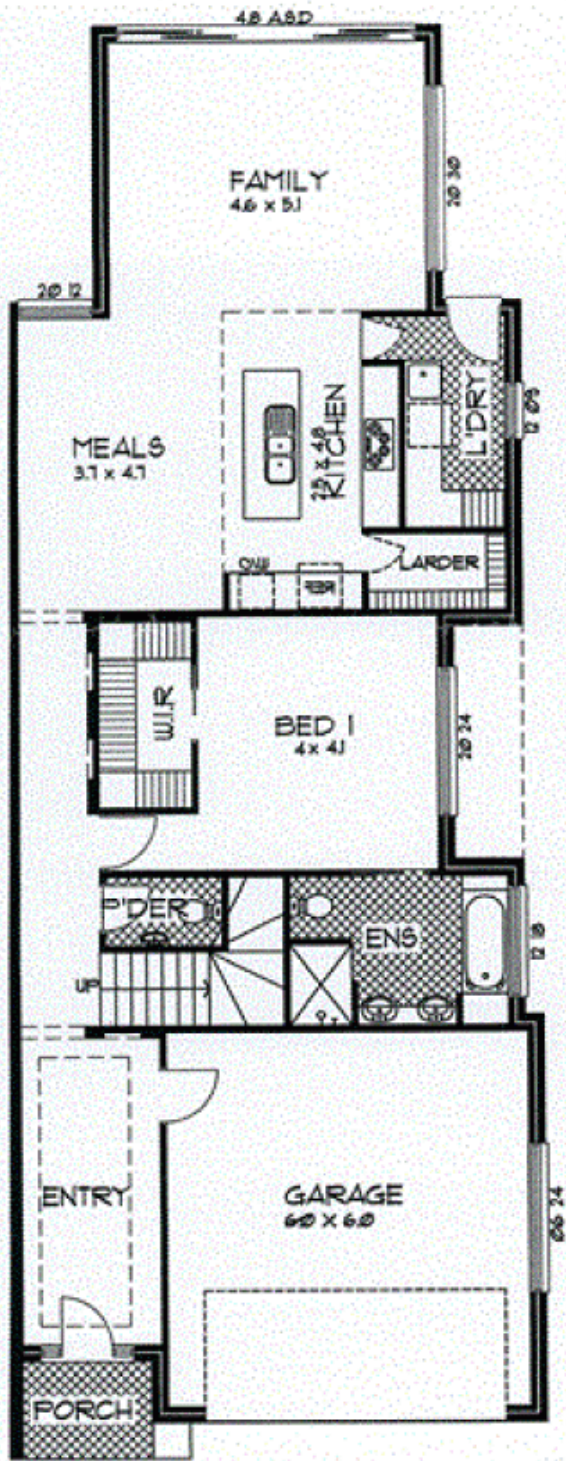
Ultra-modern homes. Up to 300m2 of home. Up to 4 Bedrooms. 3 Living areas. Home theatre fixtures included.

View : <https://www.bruse.com.au/sale/sa/eastern-suburbs/rostrrevor/residential/house/5550752>

These 2 fantastic new age homes offer a great easy care lifestyle in a top spot. Close to excellent shopping facilities and walking distance to Morialta Conservation Park and its wonderful walking trails. You will be impressed! The choice of 2 homes that vary in size and price.

Residence 1A \$685,000

Custom built for the owners and less than 1 year old. All extras such as quality window treatments, landscaping, wiring for surround sound HI-FI plus all the little extras you need to do when purchasing a new home that usually add up in extra money spent... It's all done and ready to move straight in and enjoy life.



RESIDENCE 1B

AREAS:	
LF. LIVING:	126.66 SQM.
UF. LIVING:	74.14 SQM.
GARAGE	42.25 SQM.
PORTICO	3.62 SQM.
TOTAL:	246.67 SQM.