

1001/91-96 North Terrace ADELAIDE SA

1 1

****ANOTHER PROPERTY SOLD BY TOBY SHIPWAY - TO GET THE MAXIMUM PRICE WITH MINIMUM FUSS CALL TOBY SHIPWAY 0413 600 919****

Building Size : 10 sqm
View : <https://www.bruse.com.au/sale/sa/adelaide/adelaide/residential/apartment/5550733>

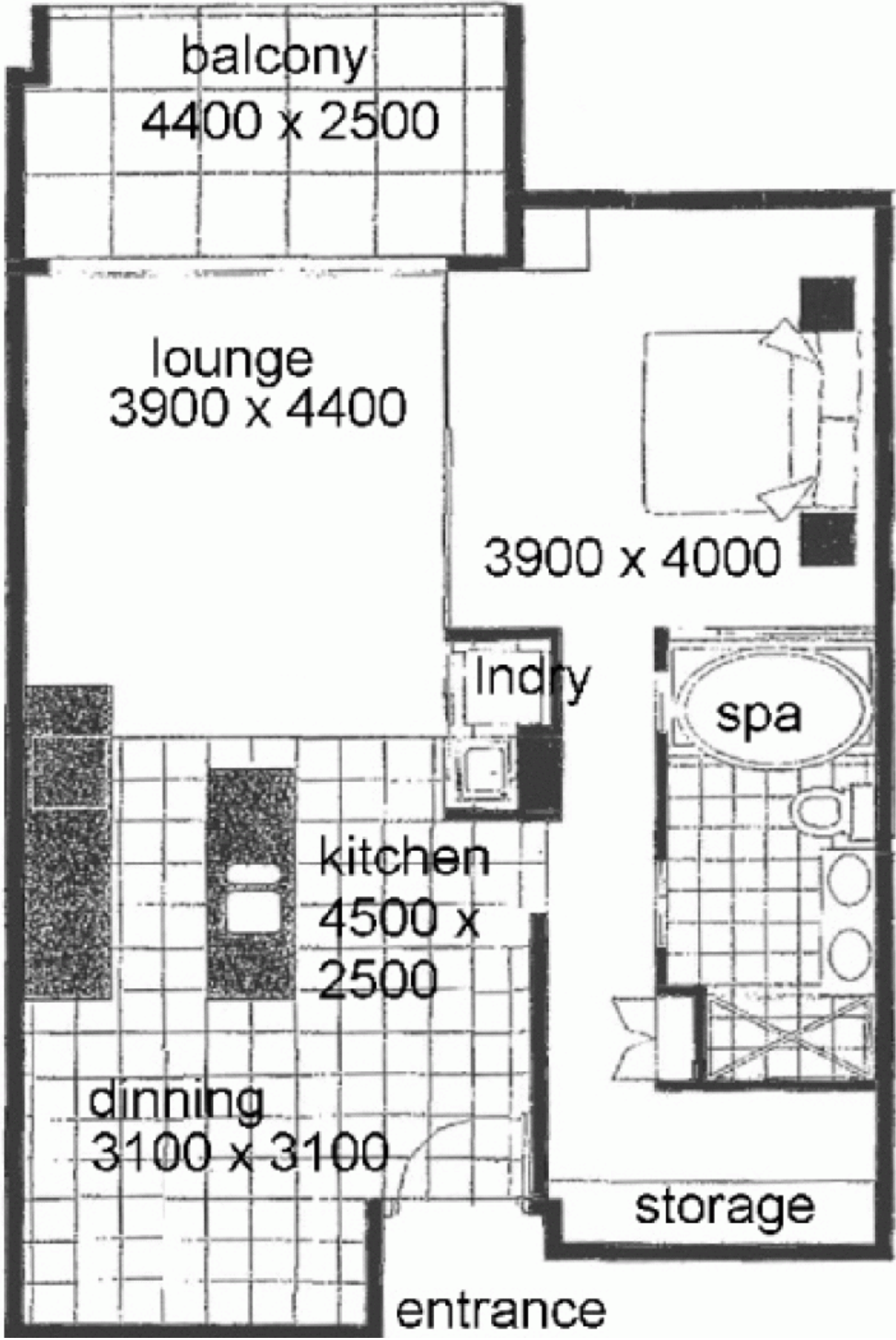
This luxury North Terrace apartment boasts the largest one bedroom floor plan in the Embassy with 90 square meters of light filled living.

Situated on the 10th floor with stunning 180 degree views over North Terrace, the soon to be developed Adelaide Oval and River Torrens Precinct, this an excellent and unique opportunity in a city location with so much potential.

Future developments still to come include the redevelopment of Adelaide Oval, expansion of the Convention Centre, upgraded Sky City Casino, retail promenade at the Festival Plaza and the new Royal



Toby Shipway
8413 8181



balcony
4400 x 2500

lounge
3900 x 4400

3900 x 4000

Indry

kitchen
4500 x
2500

dinning
3100 x 3100

spa

storage

entrance