



View overlooking
Pitman Park



1/13 Bridge Street SALISBURY SA

2 1 1

SOLD BY TOBY SHIPWAY - TO GET THE MAXIMUM PRICE WITH THE MINIMUM OF FUSS CALL TOBY SHIPWAY TODAY ON 0413 600 919

Building Size : 9 sqm
View : <https://www.bruse.com.au/sale/sa/north-north-east-suburbs/salisbury/residential/apartment/5550692>

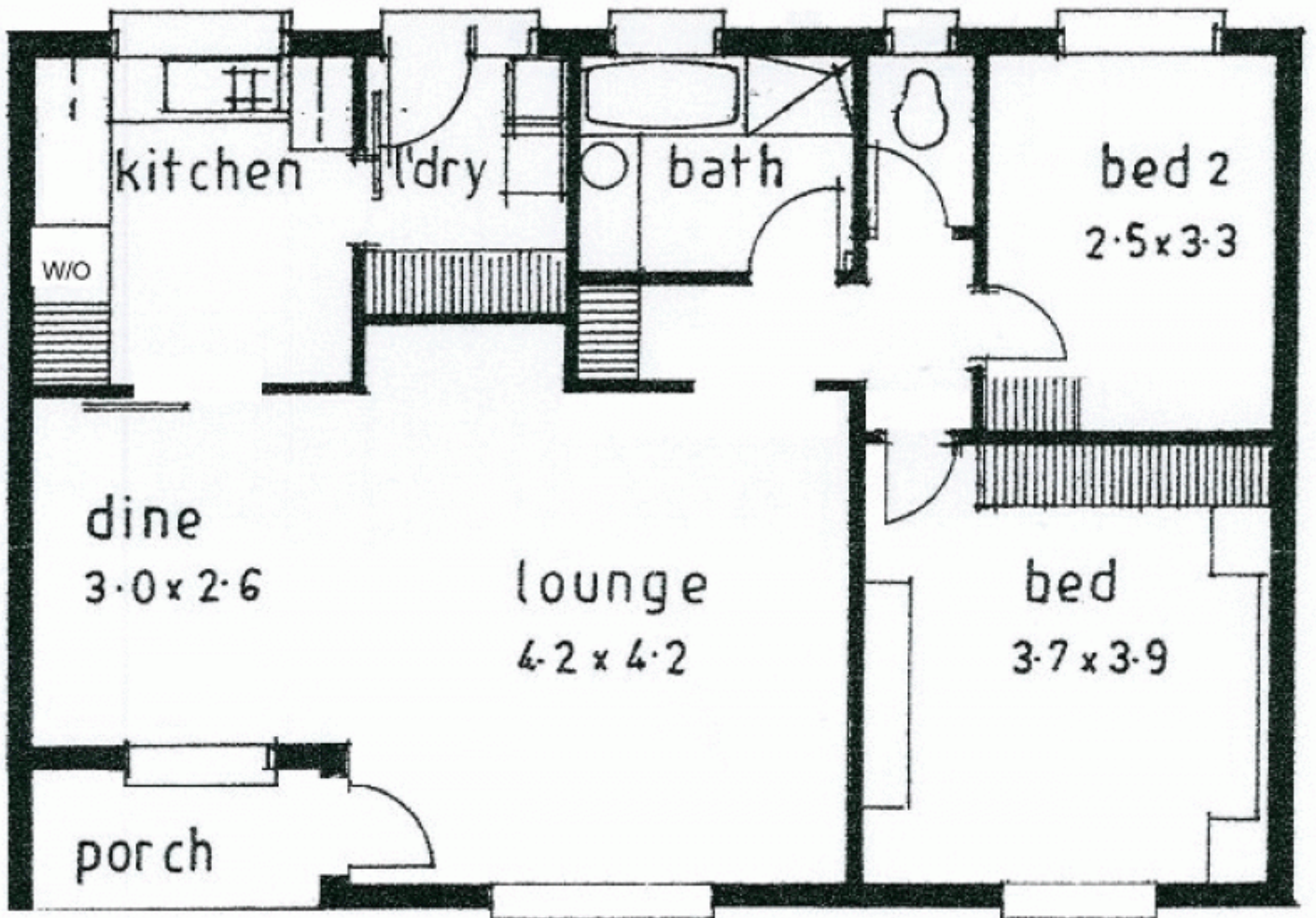
This recently renovated 2 bedroom ground floor unit offers comfortable living with views directly over the Pitman Park.

Choose to move straight in and enjoy a low maintenance lifestyle or reap the rewards as a fuss free investment property with a potential rental return of \$195 per week. This a great location only minutes away from shopping, dining and public transport.

This unit has been completely renovated throughout with new carpets, a fresh coat of paint and new window treatments. The open plan living and dining is much larger than most units and is welcomed with plenty of natural



Toby Shipway
8413 8181



kitchen

l'dry

bath

bed 2
2.5 x 3.3

w/o

dine
3.0 x 2.6

lounge
4.2 x 4.2

bed
3.7 x 3.9

porch