






**16 Lucknow Close. Enter new development from Frogmore Road. KIDMAN PARK SA**

**3**  **2**  **2** 

**SOLD BY THE BRUSE DUO! TO OBTAIN THE MAXIMUM PRICE WITH THE MINIMUM FUSS CALL BEVAN BRUSE ON 0419 809 852 OR THEON BRUSE ON 0419 816 470.**

**View :** <https://www.bruse.com.au/sale/sa/western-beach-side-suburbs/kidman-park/residential/house/5550689>

This stunning new designer home is set at the end of a secluded cul de sac close to the beach and great conveniences of the local area. The new sub division includes a park and playground and is full of quality new homes. A great lifestyle awaits you.

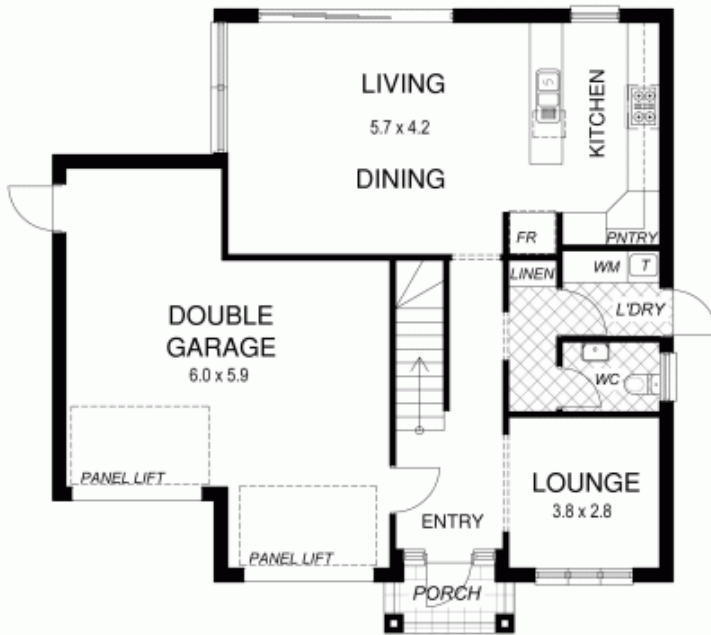
Enter through the huge timber and glass feature front door and you pass by the light filled lounge room that overlooks the lovely front garden setting. Further through is the open plan everyday living and dining area. Adjacent is the generous kitchen which includes great storage, Casearstone bench tops and has a great designer feel.



**Bevan Bruse**  
**08 8431 8181**

# 4B Lucknow Close KIDMAN PARK

## Lower Level



## Upper Level

