



13 Lucknow Close. Enter development from Frogmore Road KIDMAN PARK SA

3 2 1

SOLD BY BEVAN & THEON BRUSE. TO GET THE MAXIMUM PRICE WITH THE MINIMUM OF FUSS CALL BEVAN BRUSE TODAY OR THEON BRUSE TODAY!

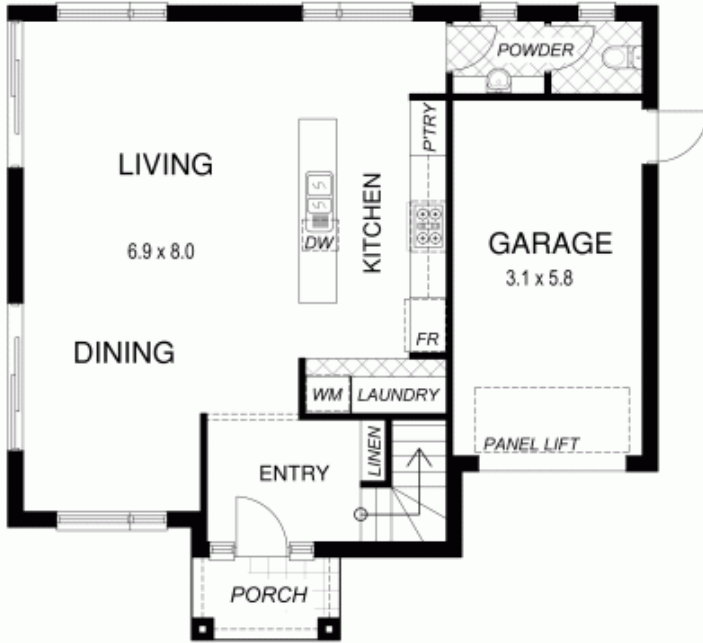
View : <https://www.bruse.com.au/sale/sa/western-beach-side-suburbs/kidman-park/residential/house/5550687>

Great value for a spacious new home with many extras. In between the beachside and the city. Located in a great new development with a park and playground, surrounded by quality new homes. Ready to move in and enjoy a superb low maintenance lifestyle. Situated at the end of a cul-de-sac.

Featuring a generous open plan light filled living area that truly has a great feel and flow for entertaining and family living. Adjacent is the very generous kitchen with stylish Caesar stone bench tops and an abundance of cupboard space. This great hub of the home opens out and overlooks

5B Locknow Close KIDMAN PARK

Lower Level



Upper Level

